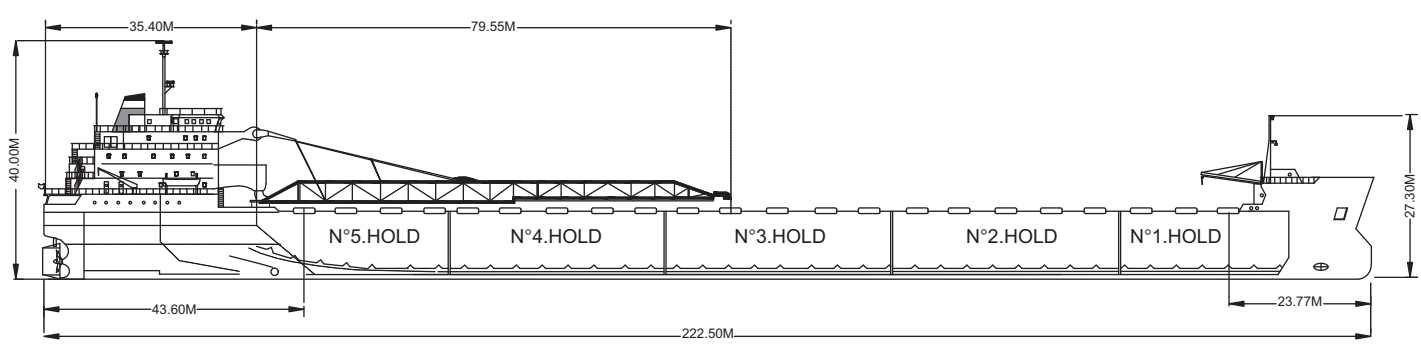
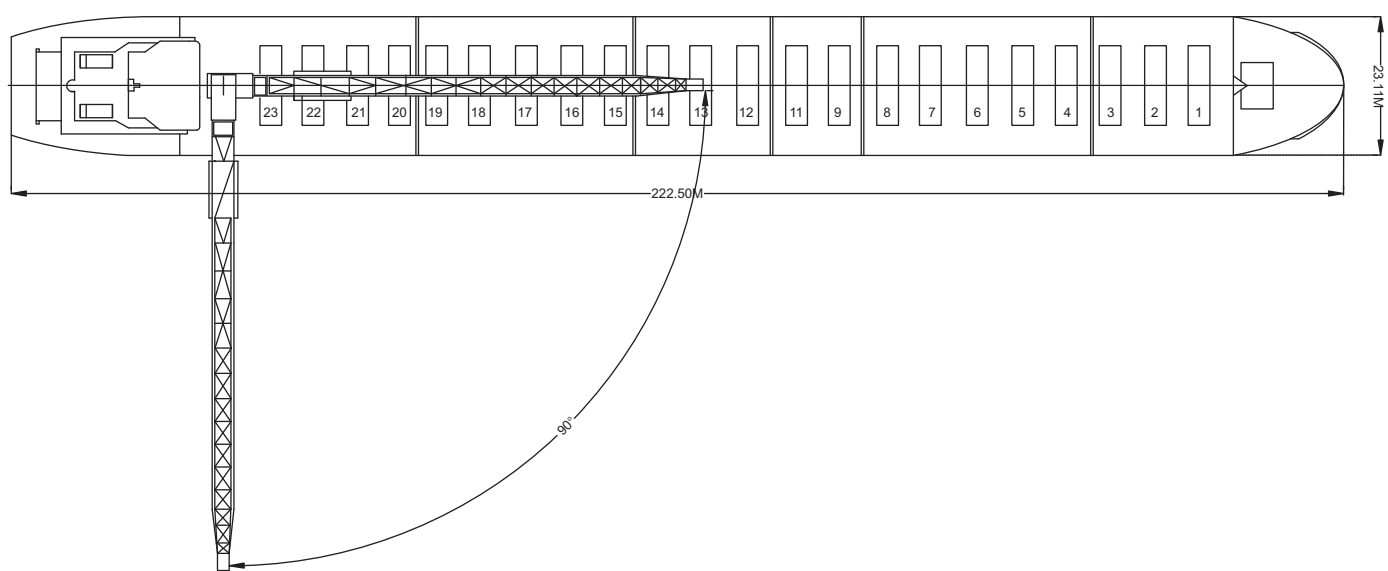
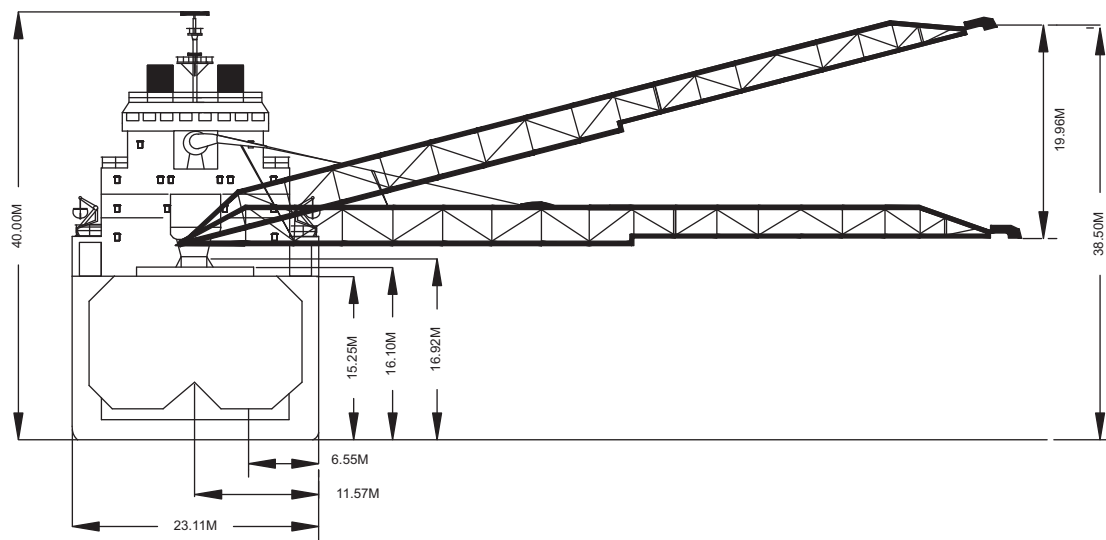




The Atlantic Superior shown loading stone at picturesque Lower Cove, Nfld.

Built	1982
Classification	Lloyds + 100 A1
Length Overall	222.54 metres
Breadth Moulded	23.13 metres
Depth Moulded	15.24 metres
Total Hold Capacity (including hatches)	38,771 cubic metres
Deadweight	38,510 tonnes
Draft	10.39 metres
Gross Tonnage	23,955.0
Net Tonnage	11,084.0
Bow Thruster	1100 kW
Length of Boom	79.55 metres
Discharge Rate	-Coal	4,000 tonnes/hr
	-Ore	5,500 tonnes/hr



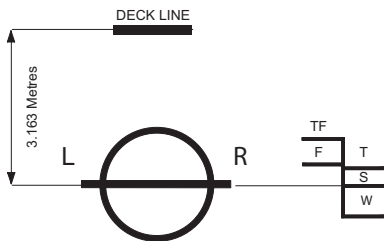
0981-04 12-22-05

Air Drafts												
(metres)												
Draft Condition	Stem	Foremast	Hatches			Cargo Gear	Main Mast		Funnel	Stern	Other Obstruction	Maximum
			Forward	Midship	Aft		Deployed	Lowered				
Keel	19.40	27.80	16.20	16.20	16.20	30.70	40.84		36.0	19.00		40.84
Light Ship	18.60	26.77	15.00	13.79	12.85	27.18	37.15		32.2	14.98		37.15
Normal Ballast 50% Bunker	13.13	21.49	9.86	9.68	9.53	24.00	34.16		29.2	12.22		34.16
Fully Loaded 50% Bunker	9.17	17.59	5.99	5.98	5.97	20.47	30.61		25.7	8.77		30.61

Hatch and Hold Specifications								
Hold Number	1	2	3A	3B	4	5	TOTAL	
Hold Volumes (cubic metres)								
Cubic	6,380.0	8,154.0	3,262.0	4,892.0	8,154.0	6,521.0	37,363.0	
Maximum Grain	6716	8424	3,370.0	4,837.0	8,424.0	7,000.0	38,988.0	
Grain in way of Hatch	91	152	60.0	91.0	152.0	120.0	666.0	
Hold Openings (metres)								
Number of Openings	3	5	2	3	5	4	22	
Opening Length	3.5	3.5	3.5	3.5	3.5	3.5		
Opening Width	15.6	15.6	15.6	15.6	15.6	15.6		
Coaming Height above Keel	16.15	16.15	16.15	16.15	16.15	16.15		
Hatch Information (metres)								
Description	Pontoon	Pontoon	Pontoon	Pontoon	Pontoon	Pontoon		
Operation	Gantry Crane	Gantry Crane	Gantry Crane	Gantry Crane	Gantry Crane	Gantry Crane		
Hatch Length	3.55	3.55	3.55	3.55	3.55	3.55		
Hatch Width	15.95	15.95	15.95	15.95	15.95	15.95		
Hatch Top Height above Keel	16.16	16.16	16.16	16.16	16.16	16.16		

Cargo Handling Equipment
• Stephens-Adamson Belt Conveyor & Loop Belt Elevator
• Hydraulic Cargo Hold Vibrators
• Dust suppression: Water Spray
• Unloader Boom Length: 79.55 metres
• Discharge rate - Coal: 4,000 tonnes/hr - Ore: 5,500 tonnes/hr
• Maximum outreach of boom: 68 metres

Consumption (tonnes per day)				
	Speed		Main Engine	Generators
	Loaded	Ballast	IFO	MDO
Sea	11.5 knots	12.5 knots	25.9	2.8
Port/Anchorage				3.68
Loading Discharge				7.44



ASSIGNED DRAFTS			
Season	Draft (metre)	Displ. (tonnes)	DWT (tonnes)
TF	10.87	51,092	39,570
F	10.65	50,030	38,510
T	10.62	49,854	39,570
S	10.40	48,810	38,510
W	10.18	47,744	37,435

Light Ship
10,363 tonnes

DEADWEIGHT SCALE									
DRAFT				DISPLACEMENT	TPC	DEADWEIGHT	DRAFT		
Sea Water		Fresh Water					Sea Water	Sea Water	
(metre)	(feet)	(metre)	(feet)	(tonnes)	(tonnes)	(tonnes)	(feet)	(metre)	
		11	36	50,000		40,000			
	34		34				34		
10			34					10	
	32	10	32				32		
9			32				30		9
	30	9	30	40,000		30,000	28		
	28		28		48				
8		8	26				26		8
	26		26						
7			24				24		
	24	7	24					7	
	22		22	30,000		20,000	22		
6			22				20		6
	20	6	20						
	18		18				18		
5			18					5	
	16	5	16				16		
	14		14	20,000		10,000	14		
4			14						4
	12	4	12				12		
	10		10				10		3
3		3	10						
	8		8	10,000			8		

0981-04 12-22-05



For more information on this ship please visit
www.cslint.com