

ALGOMA VALOUR



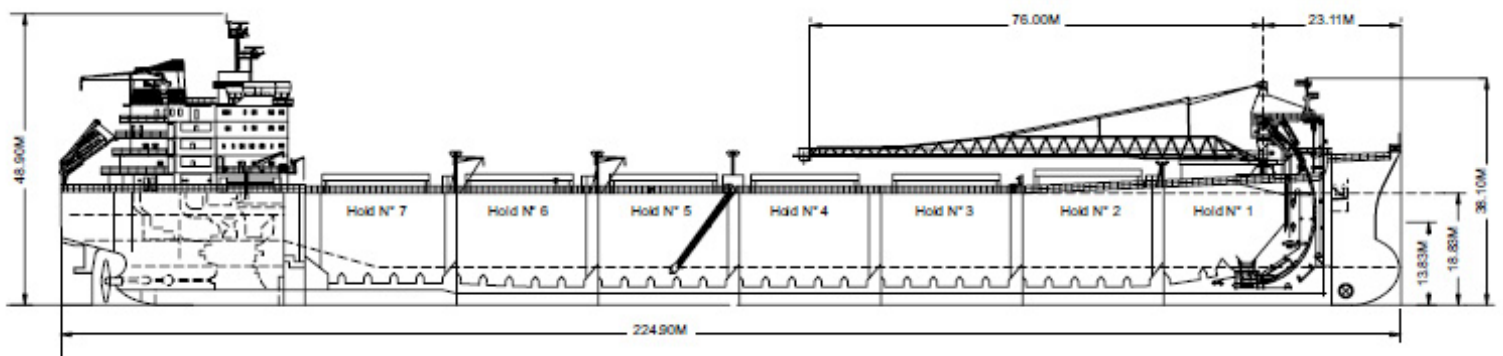
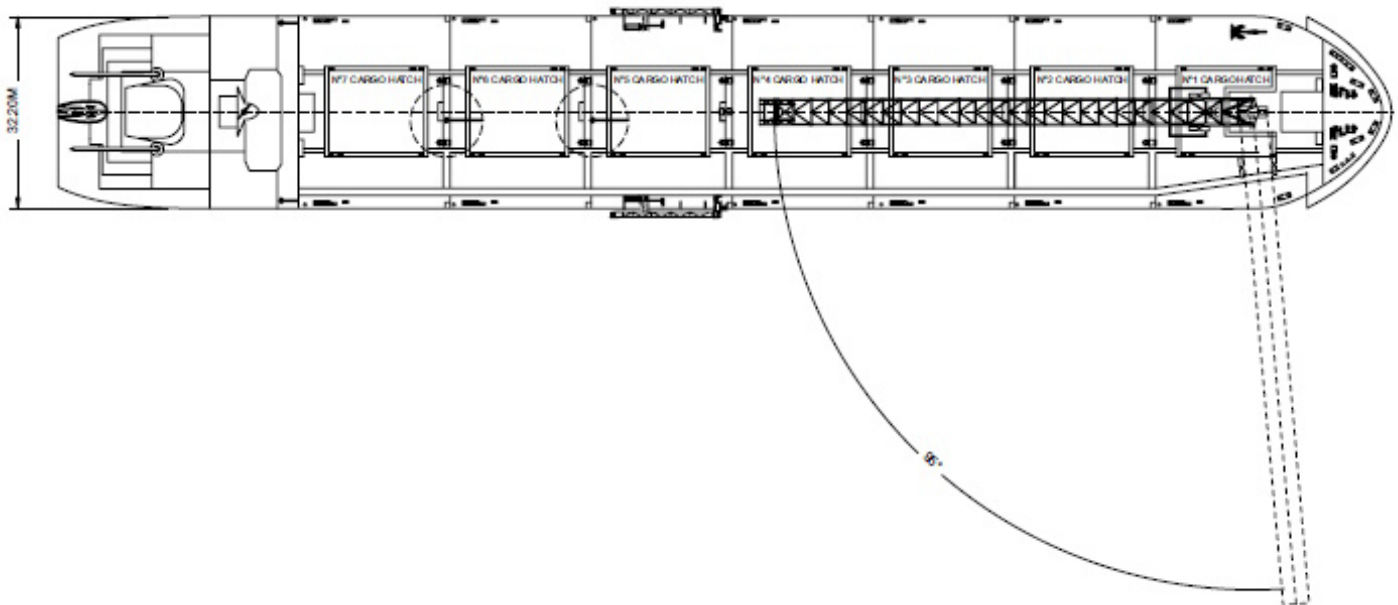
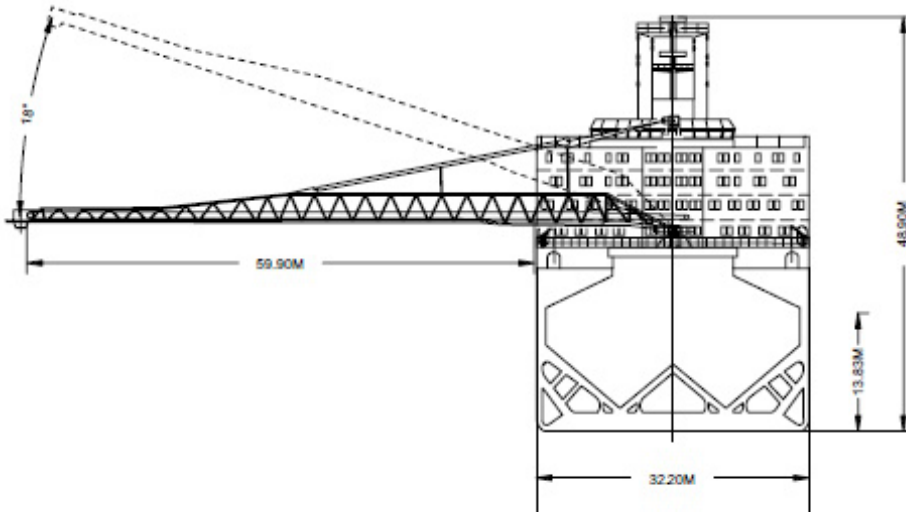
TECHNICAL SPECIFICATIONS

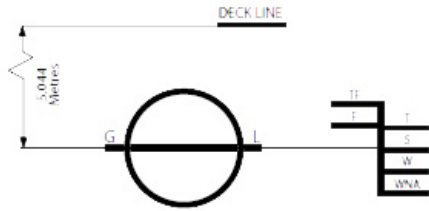
Built	2005, converted to self-unloader in 2006
Classification	GL +100 A5, BC-B, ESP, E1, IW, C1D11, + MC, E1
Length Overall	224.90 metres
Breadth Moulded	32.20 metres
Depth Moulded	18.85 metres
Total Hold Capacity (including hatches)	61,521 cubic metres
Deadweight	66,188 tonnes
Draft - Summer	13.83 metres
Gross Tonnage	42,033 tonnes
Net Tonnage	18,012 tonnes
Bow Thruster	1,500 kW
Length of Boom	76.00 metres
Discharge Rate (maximum)	4,000 tonnes/hour

MV *Algoma Valour* is a Panamax, self-unloading vessel with a deadweight of 66,188 MT.

This vessel currently operates on the coasts of the Americas.

MV *Algoma Valour* is wholly owned by Algoma Central Corporation and commercially managed by CSL as part of the CSL International Pool.





DEADWEIGHT SCALE									
DRAFT				DISPLACEMENT	TPC	DEADWEIGHT	DRAFT		
Sea Water		Fresh Water					Sea Water		
(metre)	(feet)	(metre)	(feet)	(tonnes)	(tonnes)	(tonnes)	(feet)	(metre)	
15		15					15		
	48		48	90,000		70,000	48	15	
14		14					46	14	
	46		46						
	44		44	80,000	67		44		
13		13				60,000	42	13	
	42		42						
	40		40				40	12	
12		12							
	38		38	70,000	66	50,000	38		
	36		36				36	11	
	34		34						
	32		32	60,000		40,000	32	10	
	30		30						
	28		28	50,000	63	30,000	28	9	
	26		26				26	8	
	24		24						
	22		22	40,000	62	20,000	22	7	
	20		20						
	18		18	30,000	61		18	6	
	16		16			10,000	16	5	
	14		14						
	12		12	20,000	59		12	4	
	10		10			0			
	8		8				8	3	
				10,000	57			2	

Light Ship
18,503 tonnes

HATCH AND HOLD SPECIFICATIONS

HOLD VOLUMES (CUBIC METRES)								
HOLD NUMBER	1	2	3	4	5	6	7	TOTAL
Cubic Volume (Grain)	7,440	9,256	9,076	9,079	9,075	8,852	8,743	61,521
HOLD OPENINGS (METRES)								
NUMBER OF OPENINGS	1	1	1	1	1	1	1	
Opening Length	16.70 / 8.80	16.70	16.70	16.70	16.70	16.70	16.70	
Opening Width	15.20 / 2x4.18	15.20	15.20	15.20	15.20	15.20	15.20	
Coaming Height Above Keel	23.00	21.70	21.00	21.00	21.00	21.00	21.00	
HATCH INFORMATION (METRES)								
DESCRIPTION	Side-Rolling Panels							
Operation	Hydraulic							
Hatch Length	17.00	17.00	17.00	17.00	17.00	17.00	17.00	
Hatch Width	7.75	7.75	7.75	7.75	7.75	7.75	7.75	
Hatch Top Height Above Keel (When Hatch Cover Open)	24.85	22.75	21.95	21.95	21.95	21.95	21.95	

CARGO HANDLING EQUIPMENT

Fixed-type Conveyor Along Boom
Two Variable Speed (0.47 - 1.75m/s) Hold Conveyors
Two Fixed Speed (2.54m/s) Transfer Conveyors
One Variable Speed (1.43 - 4.77m/s) 'C' Loop Conveyor
One Fixed Speed (3.80m/s) Boom Conveyor
Hold Conveyor Belts: 2.20 metres wide
Transfer Conveyor Belts: 2.20 metres wide
'C' Loop Conveyor: 2.59 metres (outside belt) and 2.74 metres (inner belt) wide
Boom Conveyor: 1.80 metres wide
All belts have a 35-degree trough.
Dust Suppression: Holds are filled with positive air pressure dust collectors as well as water/air sprayers on the boom.
Boom Working Area: 95° to port, 95° to starboard side
Maximum Boom Outreach: 61.90 metres

SPEED | CONSUMPTION

	SPEED (Knots)		CONSUMPTION (Metric Tonnes/Day)		
	Loaded	Ballast	Loaded	Ballast	Port
At Sea	12.50	13.00	31.00	31.00	N/A
Loading					2.20
Discharge					6.00

ASSIGNED DRAFT

Season	Draft (Metres)	Displacement (Tonnes)	DWT (Tonnes)
TF	14.43	86,598	68,095
F	14.14	84,696	66,193
T	14.12	86,637	68,134
S	13.83	84,691	66,188
W	13.54	82,750	64,247
WNA	13.25	80,812	62,309

All specifications are given in good faith but without guarantee.