

ALGOMA VERITY



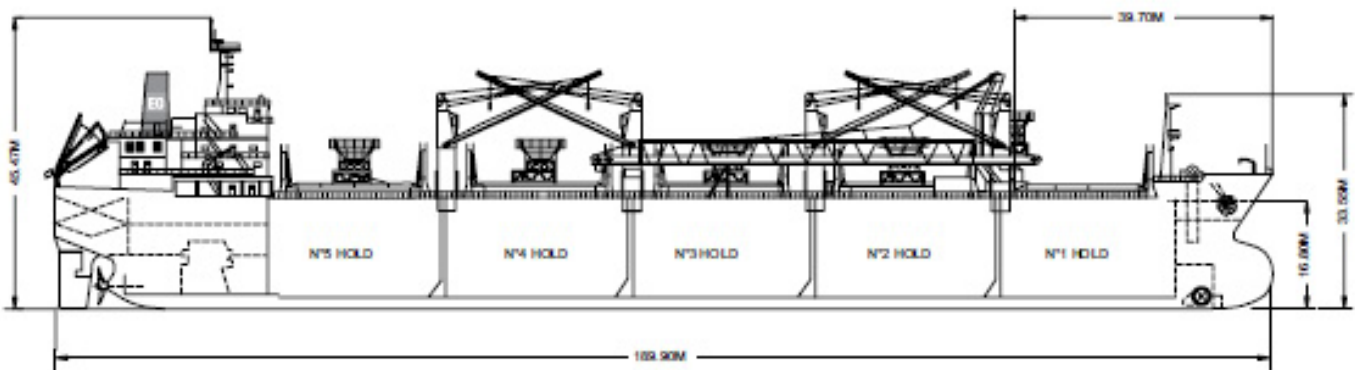
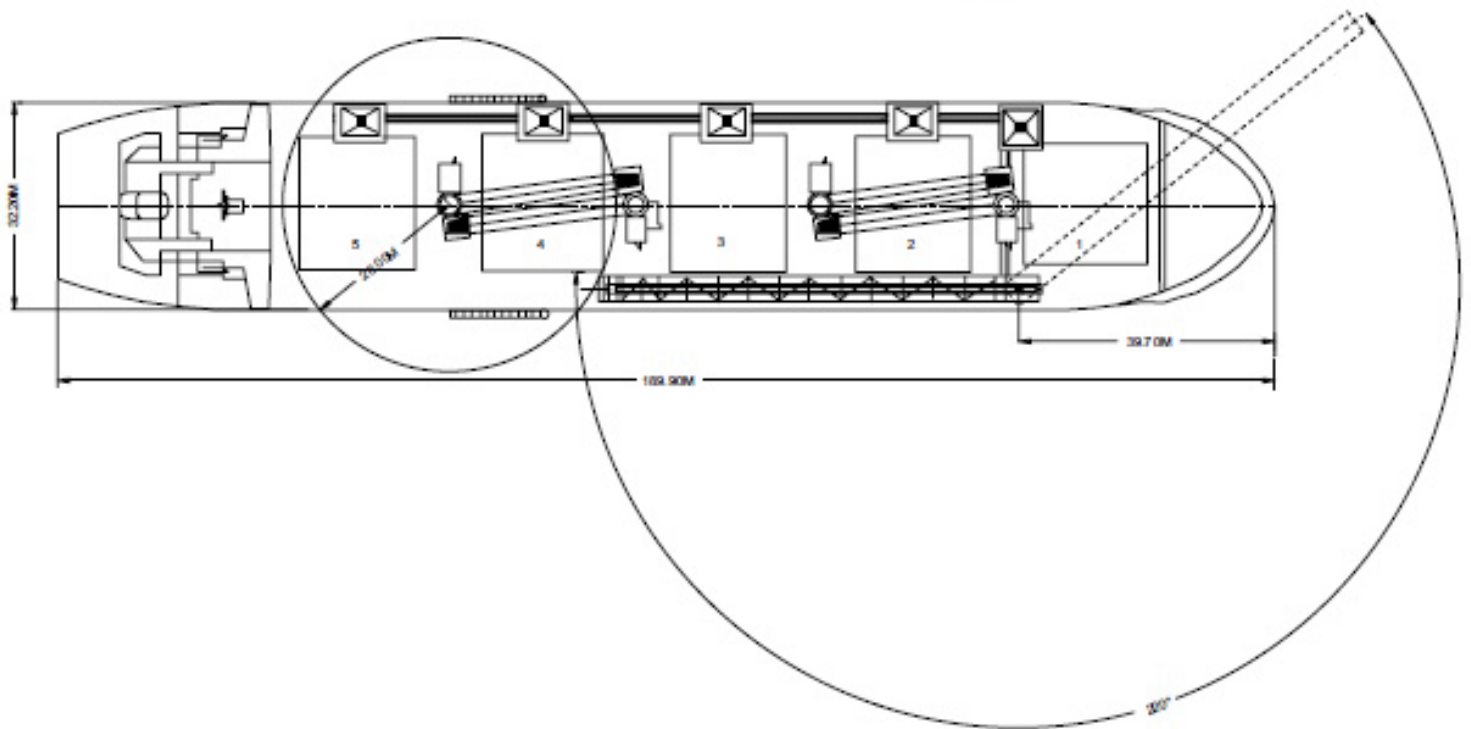
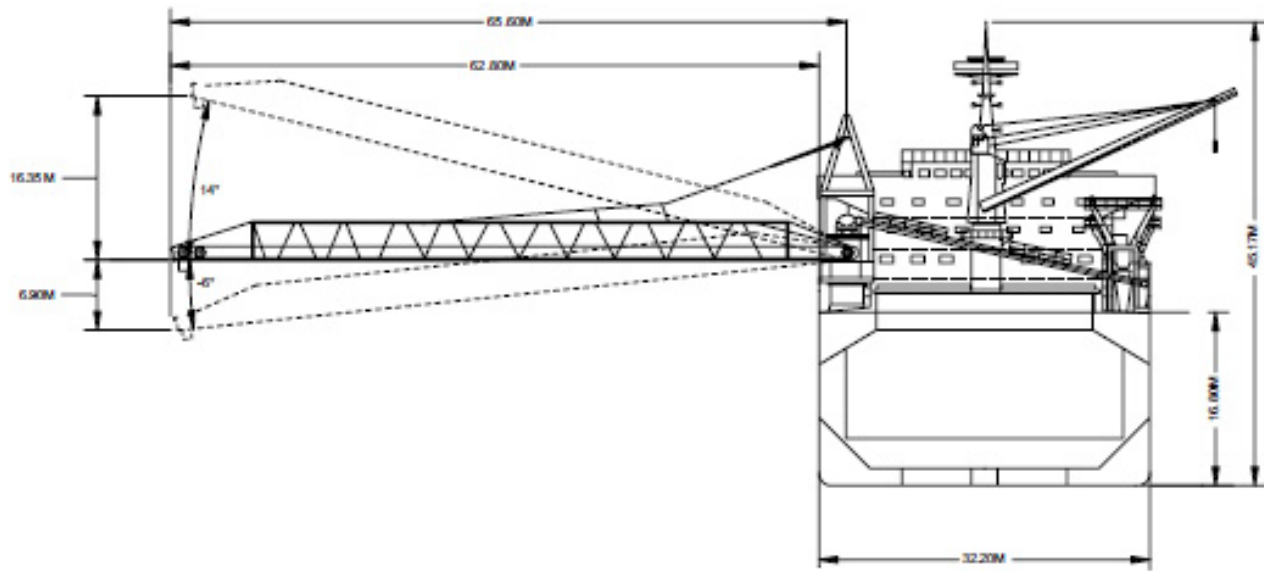
TECHNICAL SPECIFICATIONS

Built	2000
Classification	DNV +100 A5
Length Overall	189.90 metres
Breadth Moulded	32.20 metres
Depth Moulded	16.80 metres
Total Hold Capacity (including hatches)	59,742.33 cubic metres
Deadweight	50,259.40 tonnes
Draft - Summer	12.169 metres
Gross Tonnage	28,747 tonnes
Net Tonnage	16,414 tonnes
Bow Thruster	950 kW
Length of Boom	65.60 metres
Discharge Rate – Coal, Ore	750 tonnes/hour

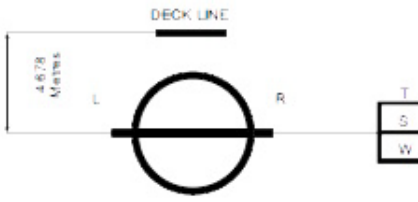
MV *Algoma Verity* is a Supramax, self-unloading vessel with a deadweight of 50,259 MT.

This vessel currently operates on the coasts of the Americas.

MV *Algoma Verity* is wholly owned by Algoma Central Corporation and commercially managed by CSL as part of the CSL International Pool.



DEADWEIGHT SCALE									
DRAFT				DISPLACEMENT	TPC	DEADWEIGHT	DRAFT		
Sea Water		Fresh Water					Sea Water		
(metre)	(feet)	(metre)	(feet)	(tonnes)	(tonnes)	(tonnes)	(feet)	(metre)	
	42	13	42				42		
12	40		40	60,000	54	50,000	40	12	
	38	12	38				38		
11	36		36				36	11	
	34	11	34	50,000		40,000	34		
10	32		32				32	10	
	30	10	30				30		
9	28		28	40,000	52	30,000	28	9	
	26	9	26				26	8	
8	24		24				24	7	
	22	8	22	30,000		20,000	22		
7	20		20				20	6	
	18	7	18				18		
6	16		16	20,000	50	10,000	16	5	
	14	6	14				14	4	
5	12		12				12		
	10	5	10	10,000			10	3	
4	8		8				8		



Light Ship
10,189 tonnes

HATCH AND HOLD SPECIFICATIONS

HOLD VOLUMES (CUBIC METRES)

HOLD NUMBER	1	2	3	4	5	TOTAL
Cubic Volume (Maximum)	10,174.30	11,983.90	11,986.20	11,986.20	11,289.70	57,420.30

NUMBER OF OPENINGS	1	1	1	1	1
Opening Length	16.00	17.60	17.60	17.60	17.60
Opening Width	17.60	20.80	20.80	20.80	20.80
Coaming Height Above Keel	18.43	18.43	18.43	18.43	18.43

HATCH INFORMATION (METRES)

DESCRIPTION	Huahai Kvaerner				
Operation	Hydraulic Folding				
Hatch Length	16.38	17.98	17.98	17.98	17.98
Hatch Width	8.00	21.20	21.20	21.20	21.20
Hatch Top Height Above Keel (When Hatch Cover Open)	18.70	18.70	18.70	18.70	18.70

CARGO HANDLING EQUIPMENT

Unloading Equipment: Krupp system with deck mounted three conveyor belts including slewing boom. Five hoppers with vibration feeders. Material passes through the hoppers onto a longitudinal conveyor to a cross conveyor to the base of the main unloading boom.

Dust Suppression: Water Spray

Vessel fitted with four electro-hydraulic cranes with 12 cubic metre grabs

SPEED | CONSUMPTION

	SPEED (Knots)		CONSUMPTION (Metric Tonnes/Day)		
	Loaded	Ballast	Loaded	Ballast	Port
At Sea	12.00	12.50	23.00	22.00	N/A
Loading					3.60
Discharge					5.60

ASSIGNED DRAFT

Season	Draft (Metres)	Displacement (Tonnes)	DWT (Tonnes)
T	12.42	61,821.40	51,632.40
S	12.169	60,448.40	50,259.40
W	11.916	59,081.60	48,892.60

All specifications are given in good faith but without guarantee.