

BAIE ST. PAUL



CANADA STEAMSHIP LINES



TECHNICAL SPECIFICATIONS

Vessel Type	Self-Unloading Bulk Carrier
Deadweight (DWT)	35,250 tonnes
Built	2012
Classification	+ 100 A1
Length Overall	225.50 metres
Breadth Moulded	23.76 metres
Total Hold Capacity (including hatches)	41,918 cubic metres
Gross Tonnage (GT)	24,430 tonnes
Net Tonnage (NT)	8,101 tonnes
Thrusters	Bow and Stern
Horsepower	BHP: 11,734 kW: 8,750
Length of Boom	79.00 metres
Average Unloading Rates (tonnes/hour)	Ore: 5,000 Coal: 4,400

TRILLIUM CLASS

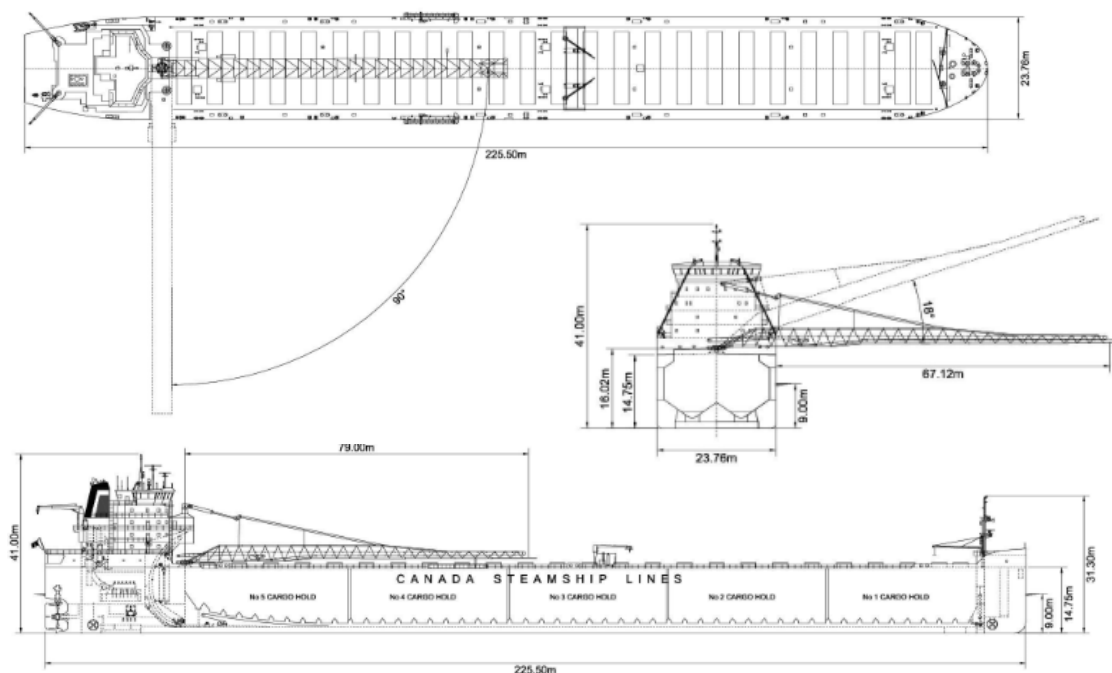
MV *Baie St. Paul* is Canada Steamship Lines' first of four Trillium Class self-unloading lakers to be introduced in the Great Lakes/ St. Lawrence River fleet. The vessel arrived in the Port of Montreal from her maiden voyage on December 1, 2012.

Like all Trillium Class vessels, *Baie St. Paul* is equipped with leading-edge technology and is designed to provide overall operational efficiency. The vessel features the latest engine technology and hull design to increase fuel efficiency and decrease air emissions, double hulls to prevent spills in the event of an accident as well as state-of-the-art cargo handling systems to minimize dust and cargo residue.

Baie St. Paul received the *International Bulk Journal's* 2012 Bulk Ship of the Year Award and was selected by the Royal Institute of Naval Architects as a Significant Ship of 2012.

BAIE ST. PAUL

TRILLIUM CLASS SELF-UNLOADER



DRAFT AND DEADWEIGHT

MARK (IN FW)	DRAFT		DEADWEIGHT	
	Metres	Feet	Tonnes	LT
Summer	9.00	29' 6"	34,402	33,859
Midsummer	9.23	30' 3"	35,564	35,002
Intermediate	8.90	29' 2"	33,870	33,335
Winter	8.80	28' 10"	33,343	32,816
Seaway	8.08	26' 6"	29,650	29,182
22 Feet	6.71	22'	21,000	20,668

HOLD CAPACITIES

COMPARTEMENT	Cubic Metres	Cubic Feet
Hold # 1	7,902	278,852
Hold # 2	8,651	305,276
Hold # 3	8,651	305,276
Hold # 4	8,651	305,276
Hold # 5	8,062	284,501
Net Hold Capacity	41,918	1,479,182

PRINCIPAL DIMENSIONS

DESCRIPTION	Metres	Feet
Length Overall	225.50	739' 10"
Length B.P.	222.60	730' 3"
Breadth	23.76	77' 11"
Depth	14.75	48' 5"

TPC AND TPI (AT SEAWAY DRAFT)

TPC (t/cm)	51.40
TPI (t/in)	130.6

HATCH DIMENSIONS

LENGTH		WIDTH	
Metres	Feet	Metres	Feet
3.36	11'	17.05	55' 11"