



TECHNICAL SPECIFICATIONS

Built	1981, rebuilt with new forebody in 2006 Shiploader installed in 2024
Classification	Lloyd's Register
Length Overall	244.99 metres
Length B.P. (Lpp)	237.00 metres
Breadth Moulded	32.23 metres
Depth Moulded	20.20 metres
Total Hold Capacity (including hatches)	75,244 cubic metres
Deadweight - Summer	73,493 tonnes
Draft - Summer	13.50 metres
Gross Tonnage	45,409 tonnes
Net Tonnage	17,235 tonnes
Bow Thruster	1,500 kW
Length of Boom	50.00 metres (loads onto shiploader)
Length of Shiploader Boom	40.70 metres
Discharge Rate (maximum)	4,200 tonnes/hour or 2,500 m ³ /hour

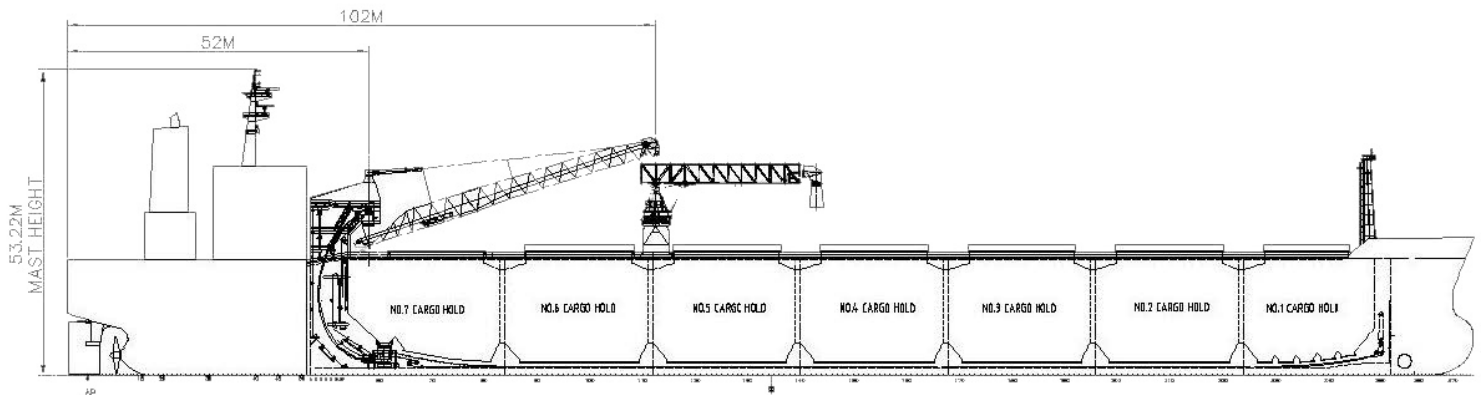
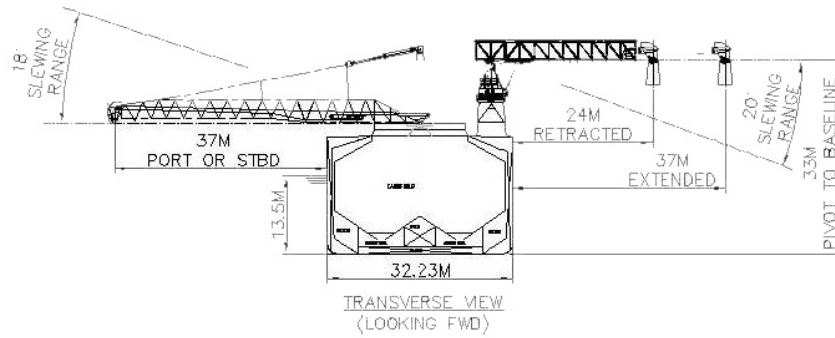
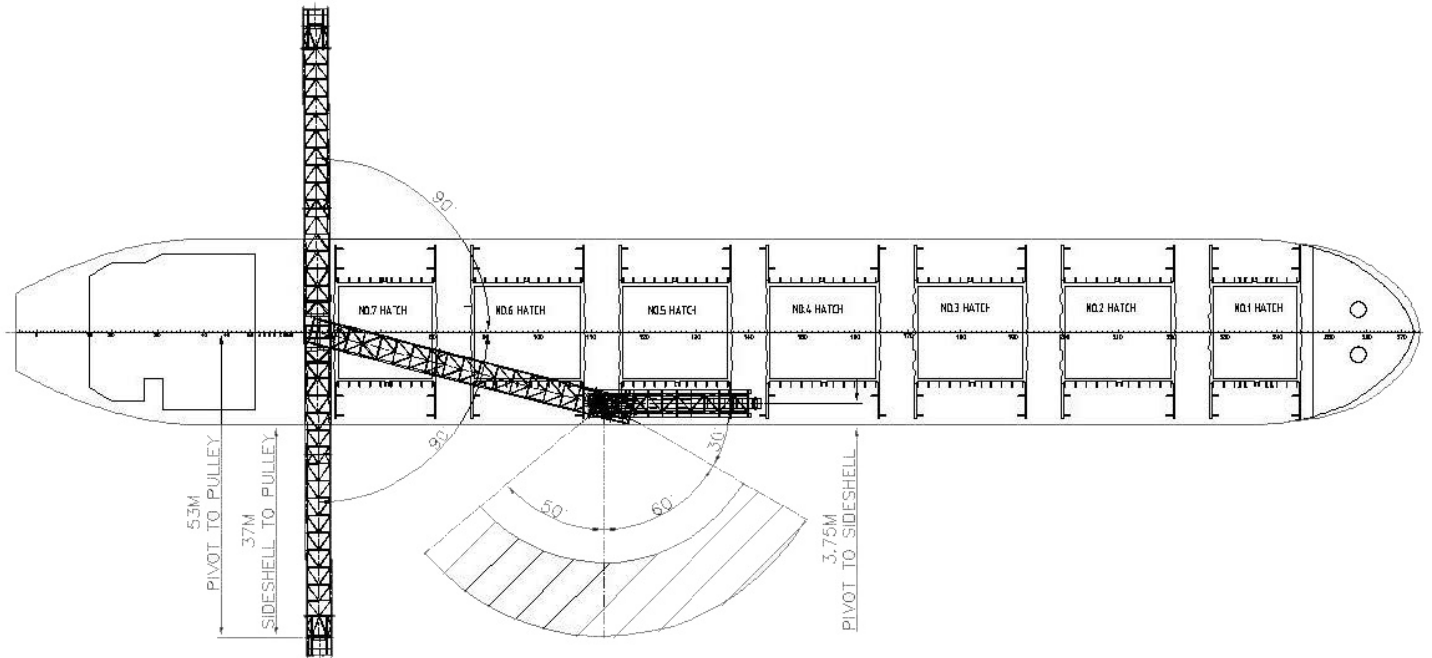
CSL Argosy is a self-unloading bulk carrier with seven cargo holds, strengthened for heavy cargoes, loaded through seven hatches.

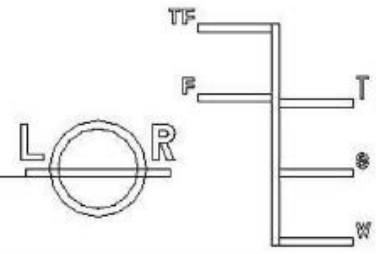
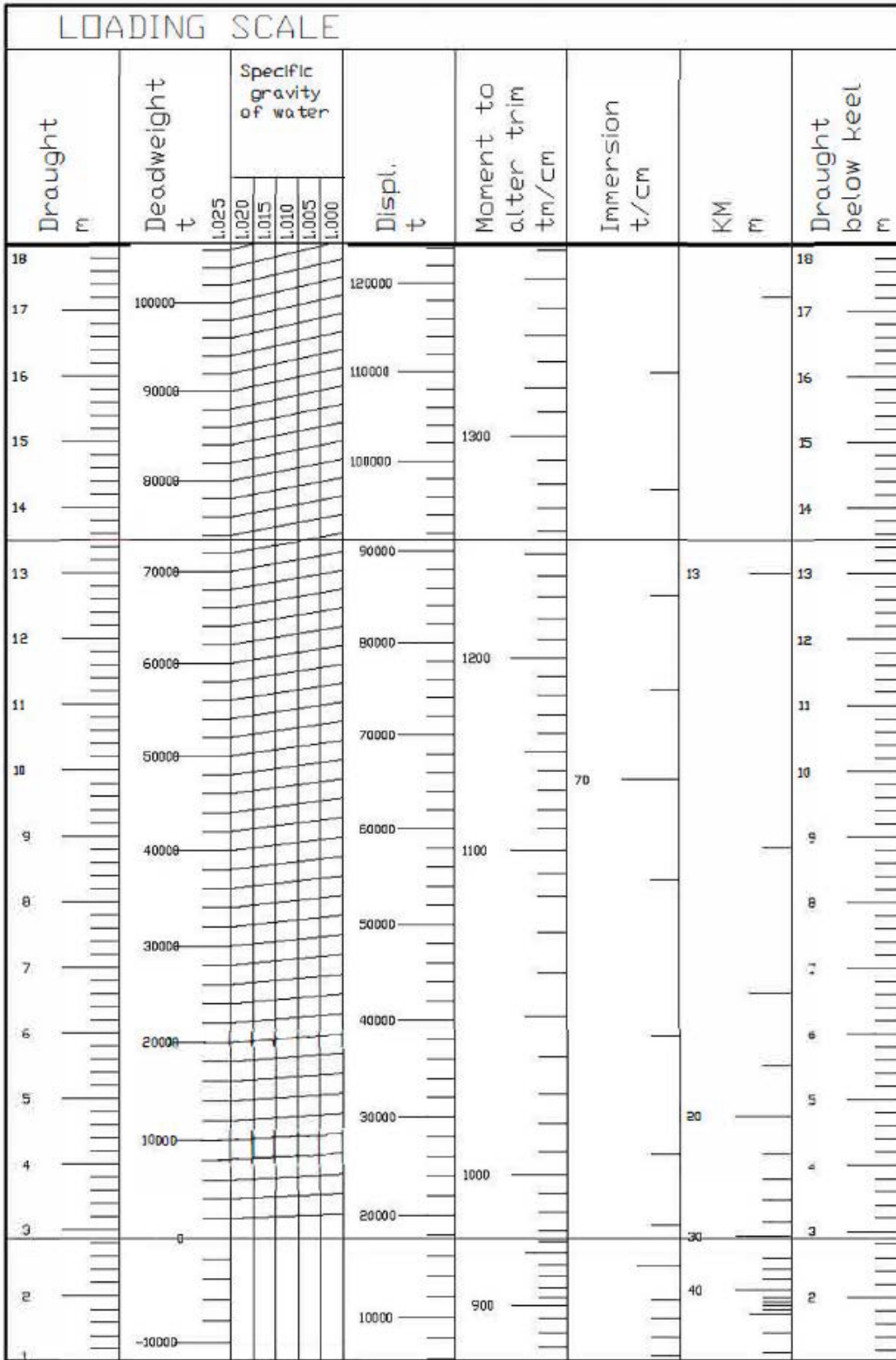
The discharge is gravity fed through the gate system via two longitudinal conveyor belts feeding to a central C-Loop that lifts the cargo onto the boom conveyor, onto a shiploader on the starboard side, onto an Ocean Going Vessel (OGV) or ashore.

Discharge rate is variable to the maximum of 4,200 metric tonnes per hour and 2,500 cubic metres per hour for volumetric cargoes.

Using the flexible boom of the shiploader and precise control of the discharge rate makes the vessel suitable for discharge to almost any receiving OGV, facility including enclosed hoppers, barges, and trucks. The vessel utilizes a bow thruster and rudder to give excellent handling characteristics.

MV CSL Argosy is wholly owned and operated by CSL.





LIGHTSHIP WEIGHT
17738.9 t

HATCH AND HOLD SPECIFICATIONS

HOLD VOLUMES (CUBIC METRES)

HOLD NUMBER	1	2	3	4	5	6	7	TOTAL
Cubic Volume (Maximum)	9,040	11,192	11,196	11,196	11,196	11,196	10,229	75,244

HOLD OPENINGS (METRES)

NUMBER OF OPENINGS	1	1	1	1	1	1	1
Opening Length	14.63	18.29	18.29	18.29	18.29	18.29	16.46
Opening Width	16.00	16.00	16.00	16.00	16.00	16.00	16.00
Coaming Height Above Keel	21.50	21.50	21.50	21.50	21.50	21.50	21.50

HATCH INFORMATION (METRES)

DESCRIPTION	Side-Rolling Panels						
Operation	Hydraulic						
Hatch Length	14.93	18.59	18.59	18.59	18.59	18.59	16.76
Hatch Width	16.30	16.30	16.30	16.30	16.30	16.30	16.30
Hatch Top Height Above Keel (When Hatch Cover Open)	22.15	22.15	22.15	22.15	22.15	22.15	22.15

CARGO HANDLING EQUIPMENT

Two Hold Conveyors

Two Transfer Conveyors

One Boom Conveyor (loads onto shiploader on starboard side)

One Shiploader Conveyor

One 'C' Loop Conveyor

All conveyors are driven by variable speed motors, gears and couplings.

Discharging is done through hydraulically operated gates fitted to outlet hoppers in the bottom of cargo holds.

Boom Belt: 1,981 mm wide

Tunnel Belts: 2,134 mm wide

Transfer Belts: 2,135 mm wide

'C' Loop Belt: 2,743/2,590 mm wide

Shiploader Belt: 1,219 mm wide

Discharge Rate: 4,200 tonnes/hour or 2,500 m³/hour, whichever occurs first

Maximum Shiploader Boom Outreach: 40.70 metres (from center of pivot to center of boom discharge chute)

SPEED | CONSUMPTION

	SPEED (Knots)		CONSUMPTION (Metric Tonnes/Day)		
	Loaded	Ballast	Loaded	Ballast	Port
At Sea	13.00	14.00	35.00	35.00	N/A
Loading					2.50
Discharge					7.50

ASSIGNED DRAFT

Season	Draft (Metres)	Displacement (Tonnes)	DWT (Tonnes)
TF	14.096	93,236	75,497
F	13.815	91,239	73,500
T	13.781	93,273	75,534
S	13.500	91,232	73,493
W	13.219	89,195	71,456

All specifications are given in good faith but without guarantee.