



TECHNICAL SPECIFICATIONS

Built	2015
Classification	Lloyd's Register
Length Overall	229.00 metres
Length B.P. (Lpp)	225.30 metres
Breadth Moulded	32.26 metres
Depth Moulded	20.00 metres
Total Hold Capacity (including hatches)	72,276 cubic metres
Deadweight	77,247 tonnes
Draft - Summer	14.467 metres
Gross Tonnage	44,408 tonnes
Net Tonnage	20,345 tonnes
Bow Thruster	1,600 kW
Length of Boom	80.00 metres
Discharge Rate – Coal	4,250 tonnes/hour
Discharge Rate – Gypsum, Aggregates, Iron Ore	5,000 tonnes/hour

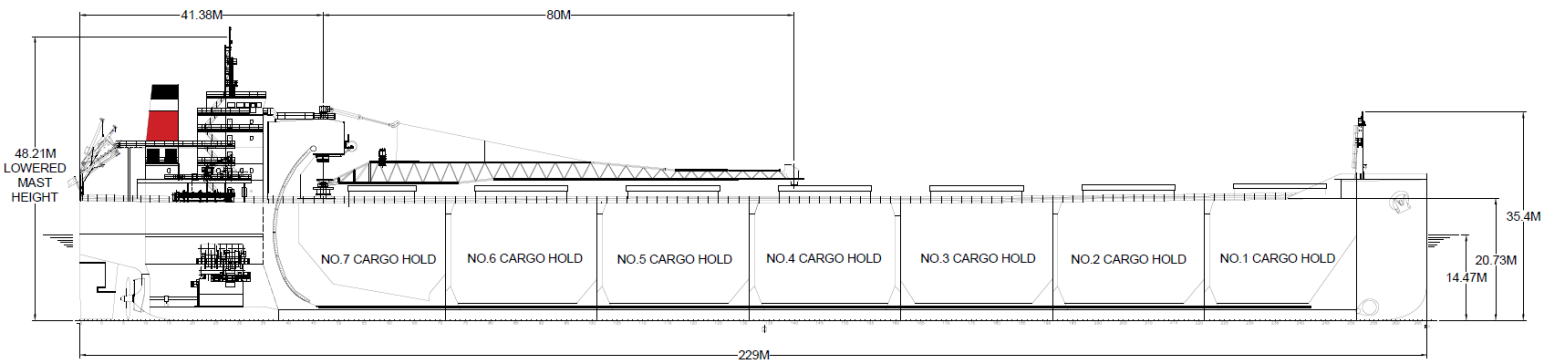
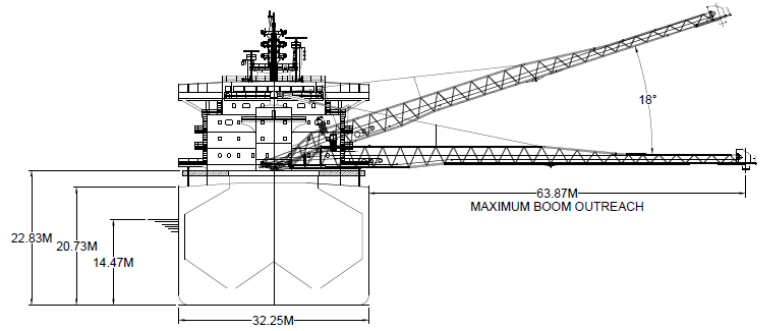
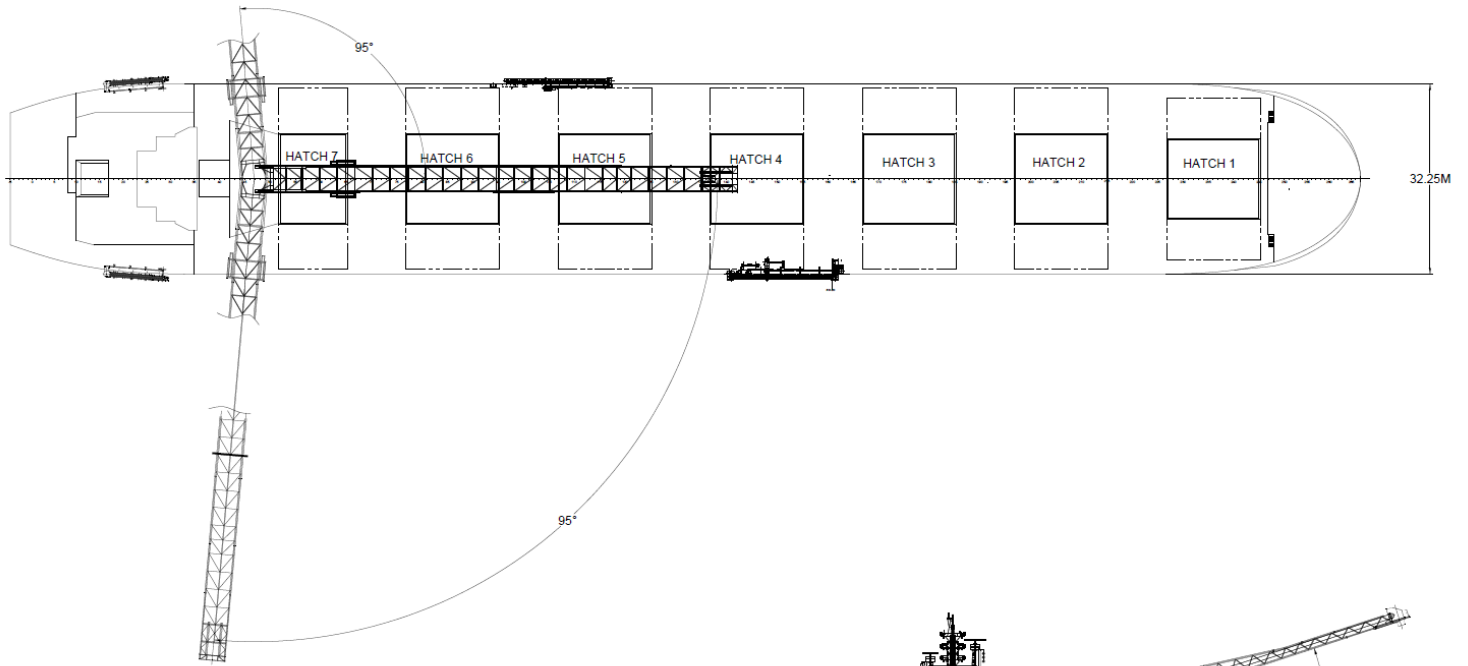
CSL Kajika is a self-unloading bulk carrier with seven cargo holds, strengthened for heavy cargoes, loaded through seven hatches.

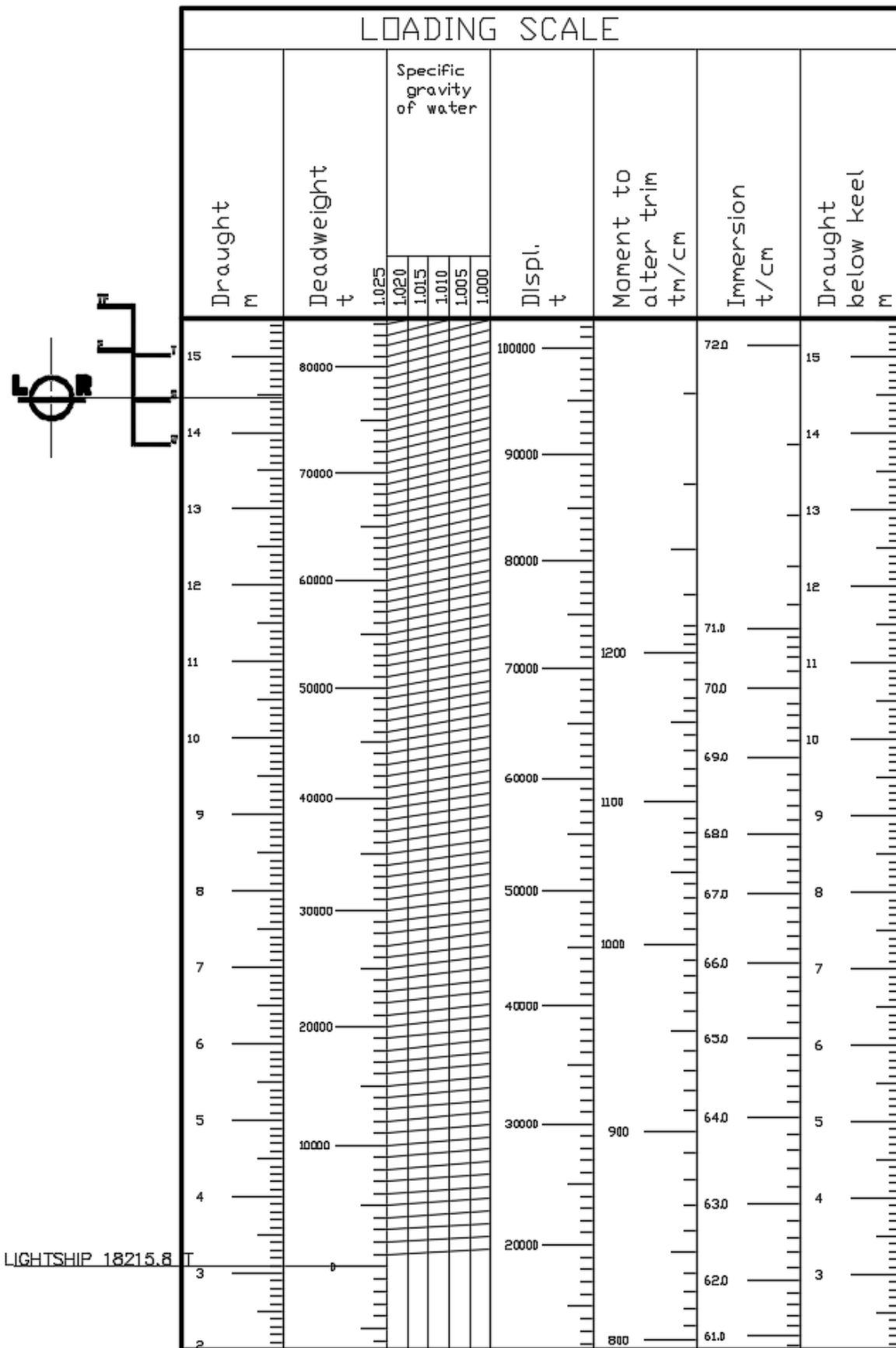
The discharge is gravity fed through the gate system via two longitudinal conveyor belts feeding to a central C-Loop that lifts the cargo onto the boom conveyor and ashore.

Discharge rate is variable to the maximum of 5,000 metric tonnes per hour and 5,300 cubic metres per hour for volumetric cargoes.

Using the flexible boom and precise control of the discharge rate makes the vessel suitable for discharge to almost any receiving facility including enclosed hoppers, barges, and trucks. The vessel is double hulled, including bunker tanks, and utilizes a bow thruster with Mewis duct and rudder to give excellent handling characteristics.

MV *CSL Kajika* is wholly owned and operated by CSL.





HATCH AND HOLD SPECIFICATIONS

HOLD VOLUMES (CUBIC METRES)

HOLD NUMBER	1	2	3	4	5	6	7	TOTAL
Cubic Volume (Maximum)	9,253	10,922	11,290	10,499	10,913	10,888	8,508	72,276

HOLD OPENINGS (METRES)

NUMBER OF OPENINGS	1	1	1	1	1	1	1
Opening Length	15.48	15.48	15.48	15.48	15.48	15.48	11.18
Opening Width	13.30	15.00	15.00	15.00	15.00	15.00	15.00
Coaming Height Above Keel	22.40	22.12	21.95	21.95	21.95	21.95	21.95

HATCH INFORMATION (METRES)

DESCRIPTION	Side-Rolling Panels						
Operation	Hydraulic						
Hatch Length	15.83	15.83	15.83	15.83	15.83	15.83	11.53
Hatch Width	13.68	15.38	15.38	15.38	15.38	15.38	15.38
Hatch Top Height Above Keel (When Hatch Cover Open)	23.28	23.00	22.83	22.83	22.83	22.83	22.83

CARGO HANDLING EQUIPMENT

Two Hold Conveyors

Two Transfer Conveyors

One Boom Conveyor

One "C" Loop Conveyor

All conveyors are driven by variable speed motors, gears and couplings.

Discharging is done through hydraulically operated gates fitted to outlet hoppers in the bottom of cargo holds.

Boom Belt: 1,981 mm wide

Tunnel Belts: 2,134 mm wide

Transfer Belts: 2,134 mm wide

"C" Loop Belt: 2,286/2,438 mm wide

Dust Suppression: Dust collectors as well as water sprayers on the boom, and foam sprayers in the transfers.

Discharge rate 5,300 m³/hour or 5,000 tonnes/hour whichever is first reached

Maximum Boom Outreach: 80 metres

SPEED | CONSUMPTION

	SPEED (Knots)		CONSUMPTION (Metric Tonnes/Day)		
	Loaded	Ballast	Loaded	Ballast	Port
At Sea	13.00	13.50	27.00	25.00	N/A
Loading					2.50
Discharge					6.00

ASSIGNED DRAFT

Season	Draft (Metres)	Displacement (Tonnes)	DWT (Tonnes)
TF	15.100	97,581	79,365
F	14.799	95,466	77,250
T	14.768	97,629	79,413
S	14.467	95,463	77,247
W	14.166	93,297	75,081

All specifications are given in good faith but without guarantee.