



TECHNICAL SPECIFICATIONS

| | |
|--|---------------------|
| Built | 2015 |
| Classification | Lloyd's Register |
| Length Overall | 229.00 metres |
| Length B.P. (Lpp) | 225.30 metres |
| Breadth Moulded | 32.26 metres |
| Depth Moulded | 20.00 metres |
| Total Hold Capacity (including hatches) | 72,276 cubic metres |
| Deadweight | 77,247 tonnes |
| Draft - Summer | 14.467 metres |
| Gross Tonnage | 44,408 tonnes |
| Net Tonnage | 20,339 tonnes |
| Bow Thruster | 1,600 kW |
| Length of Boom | 80.00 metres |
| Discharge Rate: Coal | 4,250 tonnes/hour |
| Discharge Rate: Gypsum, Aggregates, Iron Ore | 5,000 tonnes/hour |

CSL *Koasek* is a self-unloading bulk carrier with seven cargo holds, strengthened for heavy cargoes, loaded through seven hatches.

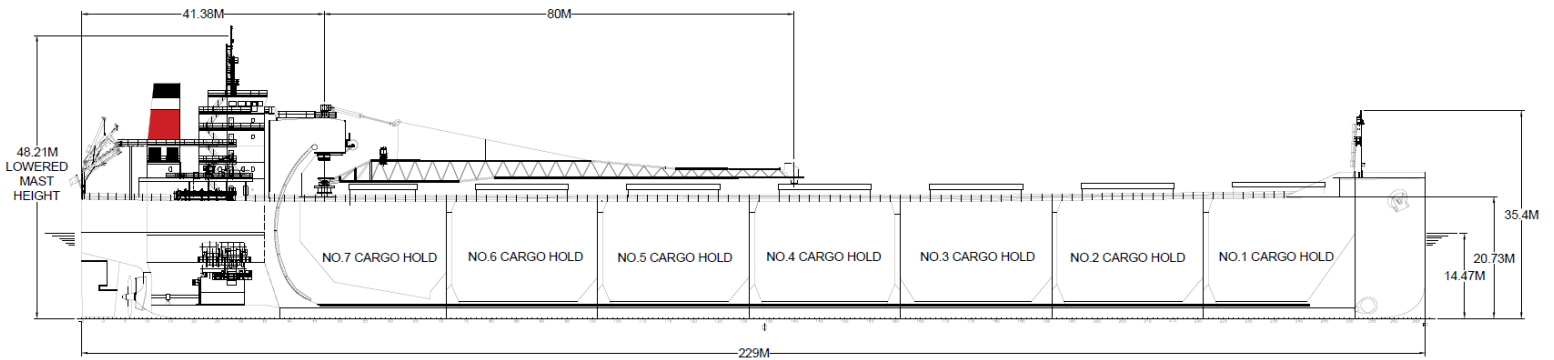
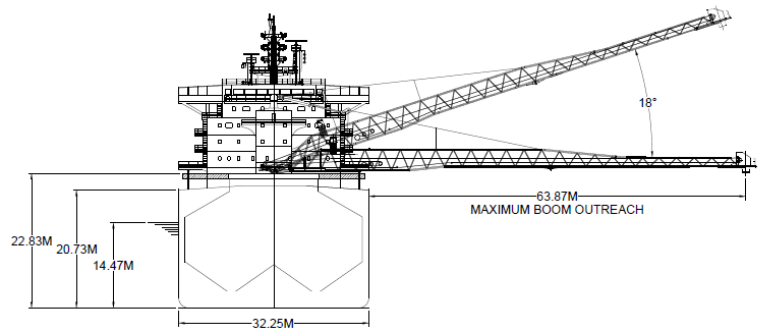
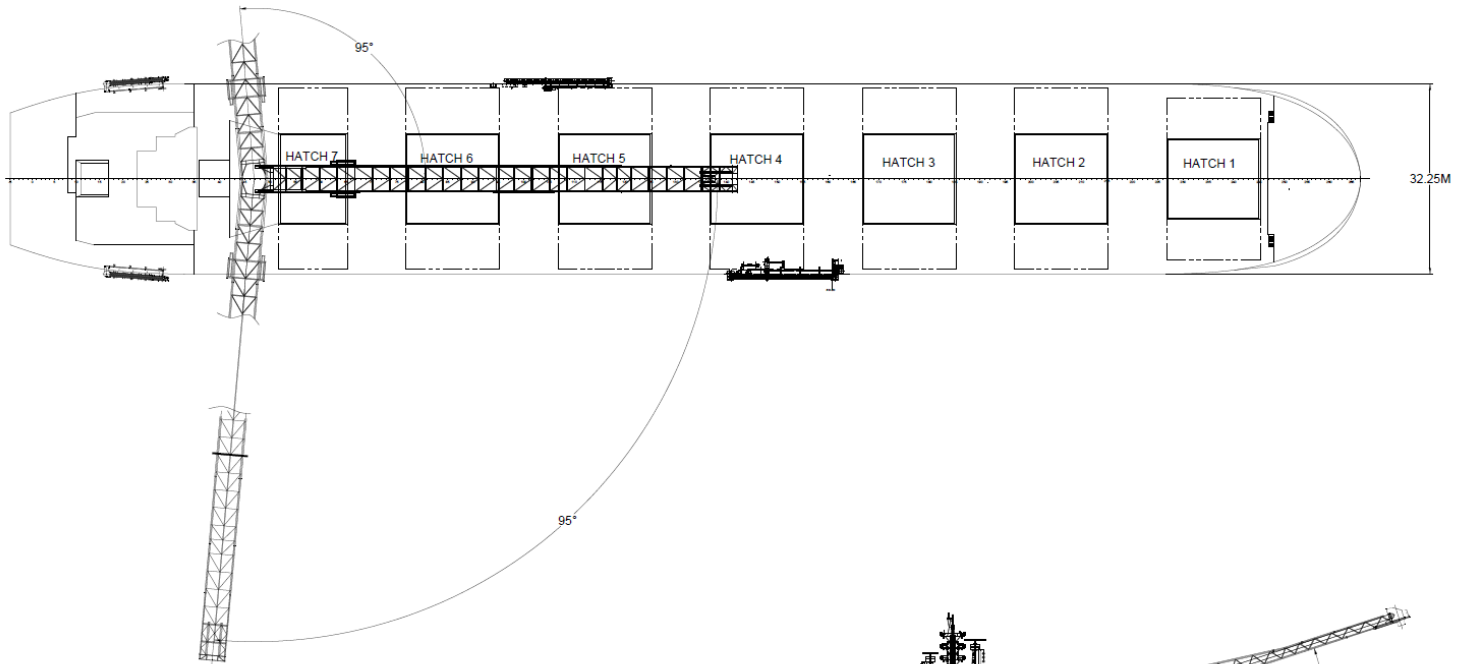
The discharge is gravity fed through the gate system via two longitudinal conveyor belts feeding to a central C-Loop that lifts the cargo onto the boom conveyor and ashore.

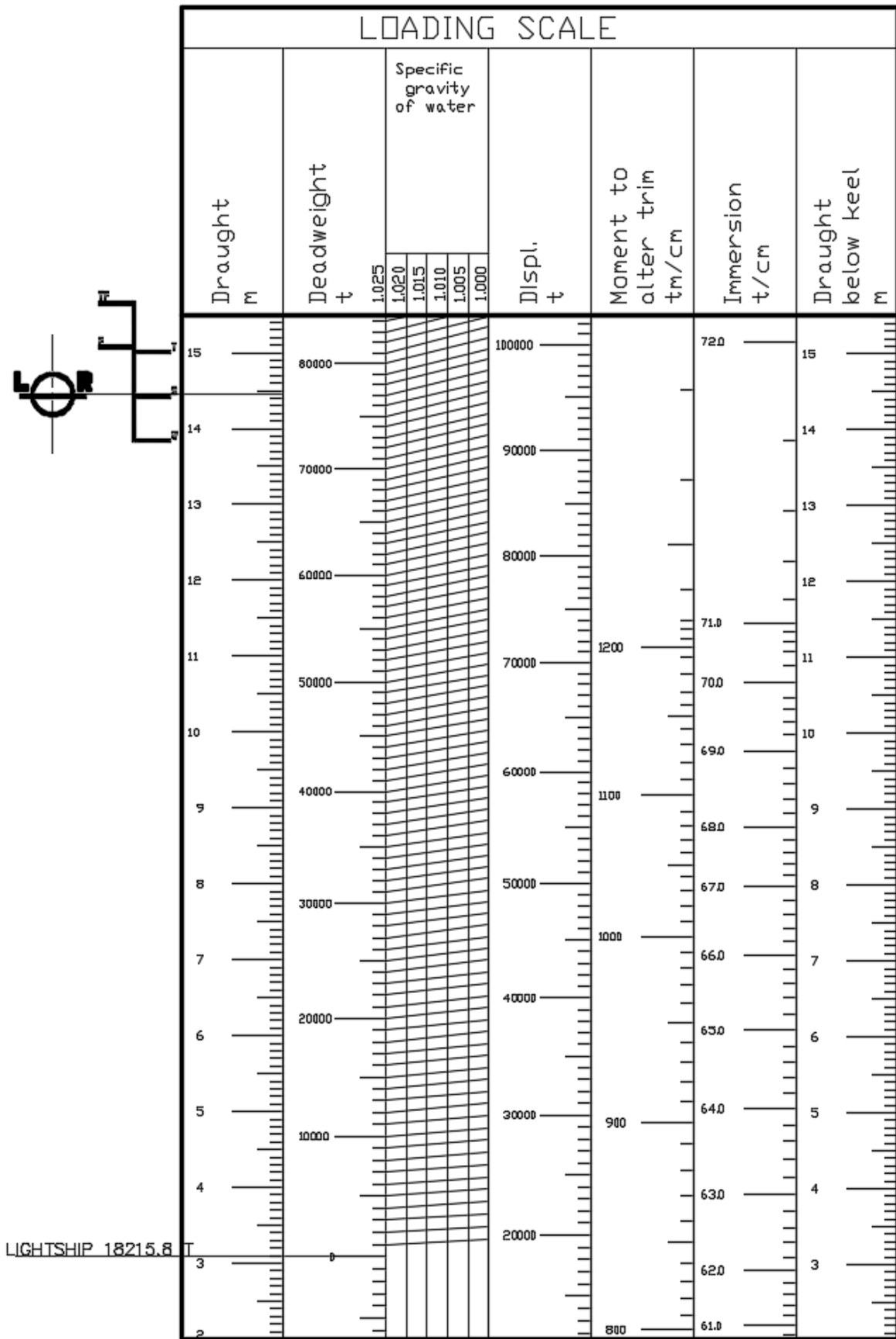
Discharge rate is variable to the maximum of 5,000 metric tonnes per hour and 5,300 cubic metres per hour for volumetric cargoes.

Using the flexible boom and precise control of the discharge rate makes the vessel suitable for discharge to almost any receiving facility including enclosed hoppers, barges, and trucks.

The vessel is double hulled, including bunker tanks, and utilizes a bow thruster with Mewis duct and rudder to give excellent handling characteristics.

MV *CSL Koasek* is wholly owned and operated by CSL.





HATCH AND HOLD SPECIFICATIONS

HOLD VOLUMES (CUBIC METRES)

| HOLD NUMBER | 1 | 2 | 3 | 4 | 5 | 6 | 7 | TOTAL |
|------------------------|-------|--------|--------|--------|--------|--------|-------|--------|
| Cubic Volume (Maximum) | 9,253 | 10,922 | 11,290 | 10,499 | 10,913 | 10,888 | 8,508 | 72,276 |

HOLD OPENINGS (METRES)

| NUMBER OF OPENINGS | 1 | 2 | 3 | 4 | 5 | 6 | 7 |
|---------------------------|-------|-------|-------|-------|-------|-------|-------|
| Opening Length | 15.48 | 15.48 | 15.48 | 15.48 | 15.48 | 15.48 | 11.18 |
| Opening Width | 13.30 | 15.00 | 15.00 | 15.00 | 15.00 | 15.00 | 15.00 |
| Coaming Height Above Keel | 22.40 | 22.12 | 21.95 | 21.95 | 21.95 | 21.95 | 21.95 |

HATCH INFORMATION (METRES)

| DESCRIPTION | Side-Rolling Panels | | | | | | |
|---|---------------------|-------|-------|-------|-------|-------|-------|
| Operation | Hydraulic | | | | | | |
| Hatch Length | 15.83 | 15.83 | 15.83 | 15.83 | 15.83 | 15.83 | 11.53 |
| Hatch Width | 13.68 | 15.38 | 15.38 | 15.38 | 15.38 | 15.38 | 15.38 |
| Hatch Top Height Above Keel (When Hatch Cover Open) | 23.28 | 23.00 | 22.83 | 22.83 | 22.83 | 22.83 | 22.83 |

CARGO HANDLING EQUIPMENT

Two Hold Conveyors

Two Transfer Conveyors

One Boom Conveyor

One "C" Loop Conveyor

All conveyors are driven by variable speed motors, gears and couplings.

Discharging is done through hydraulically operated gates fitted to outlet hoppers in the bottom of cargo holds.

Boom Belt: 1,981 mm wide

Tunnel Belts: 2,134 mm wide

Transfer Belts: 2,134 mm wide

"C" Loop Belt: 2,286/2,438 mm wide

Dust Suppression: Dust collectors as well as water sprayers on the boom and foam sprayers in the transfers.

Discharge Rate: 5,300 m³/hour or 5,000 tonnes/hour whichever is first reached

Maximum Boom Outreach: 80 metres

SPEED | CONSUMPTION

| | SPEED (Knots) | | CONSUMPTION (Metric Tonnes/Day) | | |
|-----------|---------------|---------|---------------------------------|---------|------|
| | Loaded | Ballast | Loaded | Ballast | Port |
| At Sea | 13.00 | 13.50 | 27.00 | 25.00 | N/A |
| Loading | | | | | 2.50 |
| Discharge | | | | | 6.00 |

ASSIGNED DRAFT

| Season | Draft (Metres) | Displacement (Tonnes) | DWT (Tonnes) |
|--------|----------------|-----------------------|--------------|
| TF | 15.100 | 97,581 | 79,365 |
| F | 14.799 | 95,466 | 77,250 |
| T | 14.768 | 97,629 | 79,413 |
| S | 14.467 | 95,463 | 77,247 |
| W | 14.166 | 93,297 | 75,081 |

All specifications are given in good faith but without guarantee.