



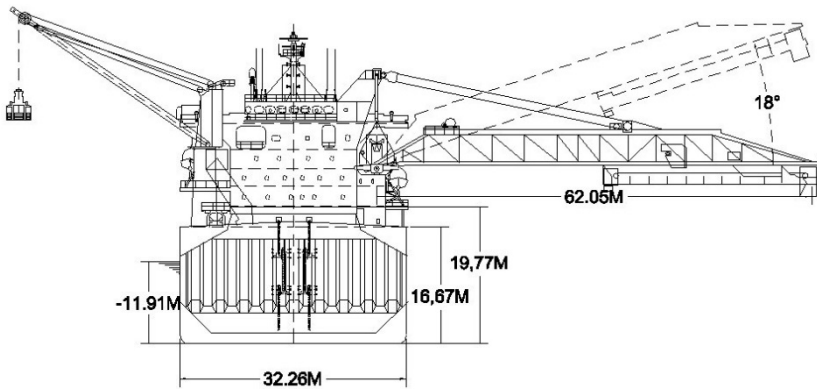
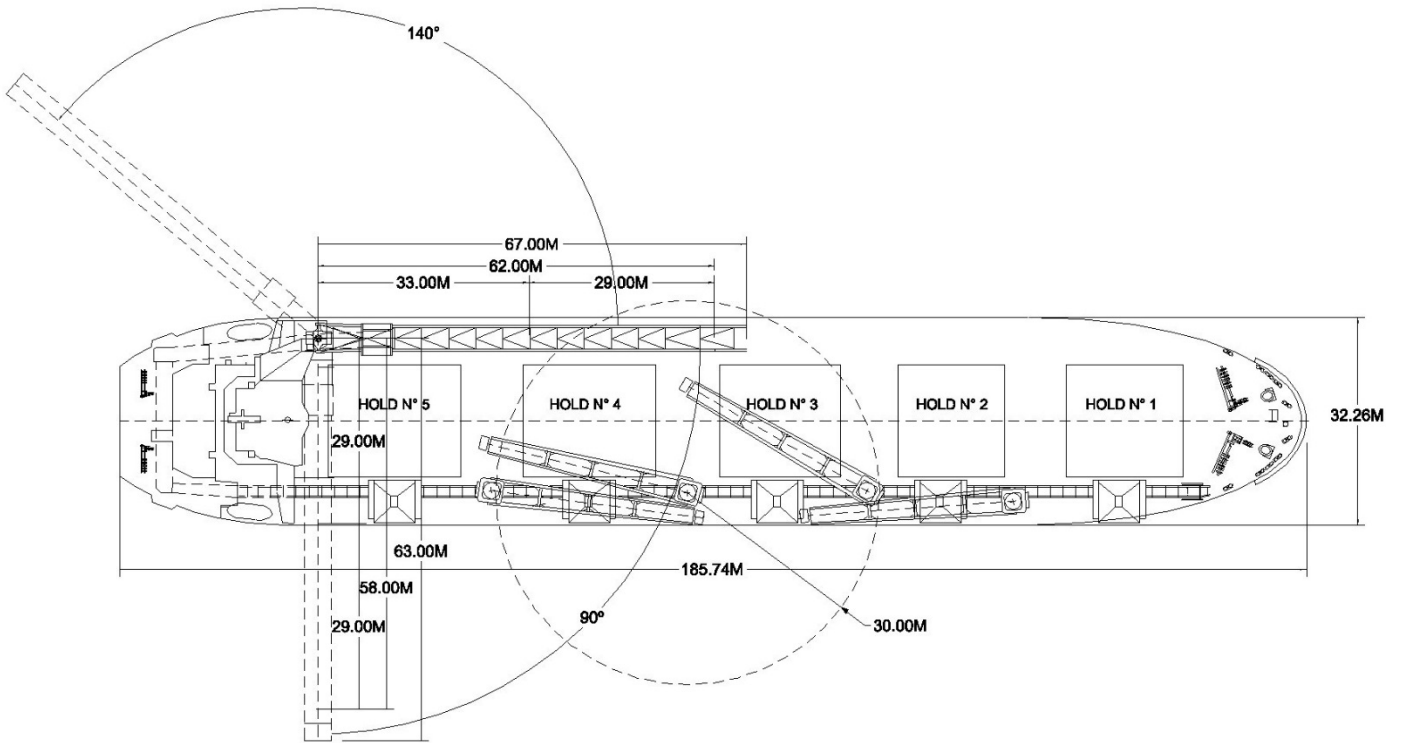
## TECHNICAL SPECIFICATIONS

Built	2002
Classification	1A1 Bulk Carrier ES(S) Grain(U) E0 ESP HC(E) Holds (2,4) may be empty IB (+) LCS (D, G,I,S) NAUTICUS (Newbuilding)
Length overall	185.74 metres
Breadth Moulded	32.26 metres
Depth Moulded	16.67 metres
Total Hold Capacity	62,363 cubic metres
Summer Deadweight (DWT)	47,665 tonnes
Draft	11.91 metres
Gross Tonnage (GT)	28,136 tonnes
Net Tonnage (NT)	17,252 tonnes
Bow Thruster	1,600 kW
Length of Boom	66.40 metres
Discharge Rate (max)	1,200 tonnes/hour

The hybrid self-unloading bulk carrier *CSL Reliance* carries gypsum, mineral sands, dolomite, sugar, salt and coal.

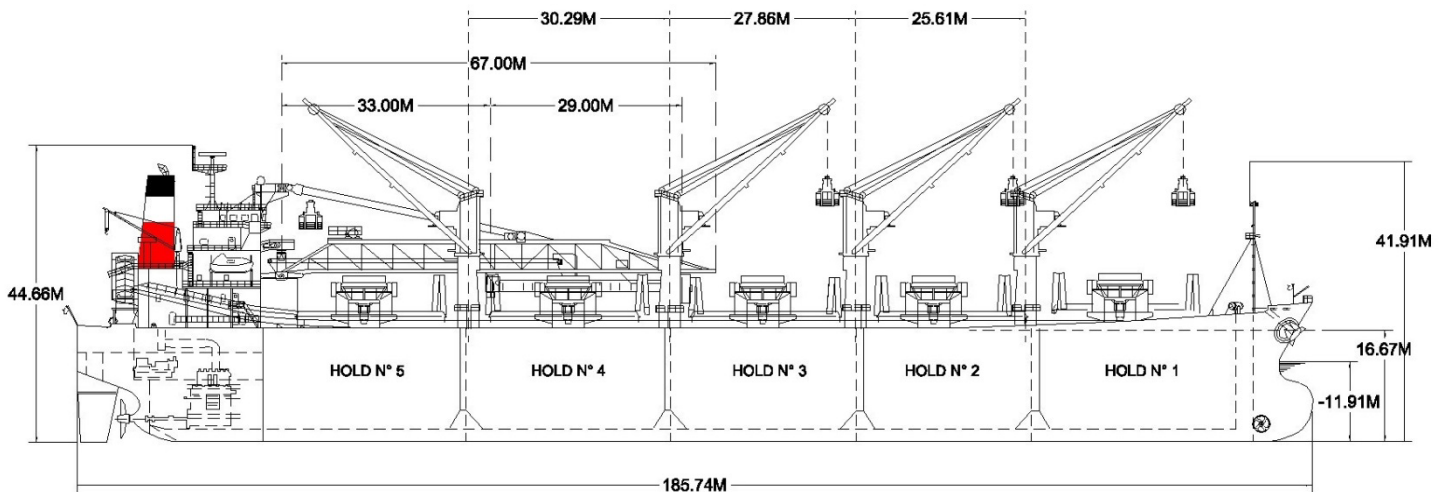
*CSL Reliance* is also utilized as a transhipment vessel for ship-to-ship loading and unloading operations.

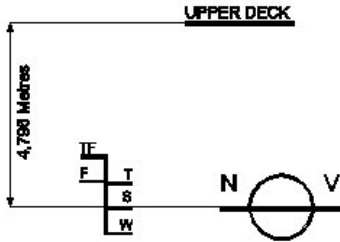
# CSL RELIANCE



## ASSIGNED DRAFTS

Season	Draft (metres)	Displ. (tonnes)	DWT (tonnes)
TF	12.43	58,491	48,965
F	12.18	57,201	47,675
T	12.16	58,509	48,983
S	11.91	57,191	47,665
W	11.66	55,878	46,352





DEADWEIGHT SCALE - CSL RELIANCE									
	DRAFT				DISPLACEMENT (tonnes)	TPC (tonnes)	DEADWEIGHT (tonnes)	DRAFT	
	Sea Water		Fresh Water					Sea Water	
	(metres)	(feet)	(metres)	(feet)				(feet)	(metres)
		42		42	60,000		50,000	42	
12		40	12	40				40	12
		38		38	55,000	54	45,000	38	
11		36	11	36				36	11
		34		34	50,000		40,000	34	
10		32	10	32				32	10
		30		30	45,000	53	35,000	30	
9		28	9	28				28	9
		26		26	40,000	52	30,000	26	
8		24	8	24				24	8
		22		22	35,000	51	25,000	22	
7		20	7	20				20	7
		18		18	30,000	50	20,000	18	
6		16	6	16				16	6
		14		14	25,000	49	15,000	14	
5		12	5	12				12	5
		10		10	20,000	48	10,000	10	
4		8	4	8				8	4
		6		6	15,000	47	5,000	6	
3		4	3	4				4	3
		2		2	10,000	45	0,0	2	
2		0	2	0		44		0	2
						43			
						42			

LIGHTSHIP 9526.1 t

## HATCH AND HOLD SPECIFICATIONS

### HOLD VOLUMES (CUBIC METRES)

HOLD NUMBER	1	2	3	4	5	TOTAL
Cubic (Grain)	11,554.00	11,975.00	13,030.00	13,896.00	11,908.00	62,363.00
Cubic (Bale)	11,476.00	11,780.00	13,708.00	13,708.00	11,840.00	61,636.00

### HOLD OPENINGS IN METRES

NUMBER OF OPENINGS	1	1	1	1	1
Opening Length	17.85	16.15	18.70	20.40	20.40
Opening Width	17.60	17.60	17.60	17.60	17.60
Coaming Height Above Keel	20.46	19.50	19.50	19.50	19.50

### HATCH INFORMATION (METRES)

DESCRIPTION	End Folding Panels				
Operation	Electr/Hydr				
Hatch Length	20.97	16.86	19.39	21.12	21.12
Hatch Width	18.00	18.00	18.00	18.00	18.00
Hatch Top Height Above Keel	18.70	18.70	18.70	18.70	18.70

## CARGO HANDLING EQUIPMENT

5 x Yokohama Fenders for Ship-to-Ship Operations

4 x 30t Electric Side Mounted Tsuji Cranes SWL 30 t

4 Orts Grabs 20.0 m<sup>3</sup> Capacity, 5 Unloading Hoppers

5x100 m<sup>3</sup> Deck Hoppers

1 Longitudinal Conveyor, 1 Cross Conveyor, 1 Incline Conveyor and 1 Boom Conveyor with Discharge Rate of (max) 1,200 t/hr.

Dust Suppression System: Water Spray System Located in each Hopper and at each Conveyor Transfer Point

All Conveyors Covered

Unloader Boom Length: 66.40 m

Unloader Boom is Reversible with 2 Discharge Points

Boom Slewing: 140 degrees to Port, 90 degrees to Starboard

Boom Luffing: Horizontal to +18 degrees

7.5 m Discharging Chute Fitted on Discharge Boom

Discharge Rate: 1,200 tph

## CONSUMPTION (TONNES PER DAY)

	SPEED		MAIN ENGINE HFO		A/E
	Loaded	Ballast	Loaded	Ballast	HFO
Sea	13.0	13.5	24.0	22.0	0.0
Port/ Anchorage			N/A	N/A	2.5
Loading/ Discharge			N/A	N/A	2.5/4.8

All specifications given in good faith but without guarantee.