

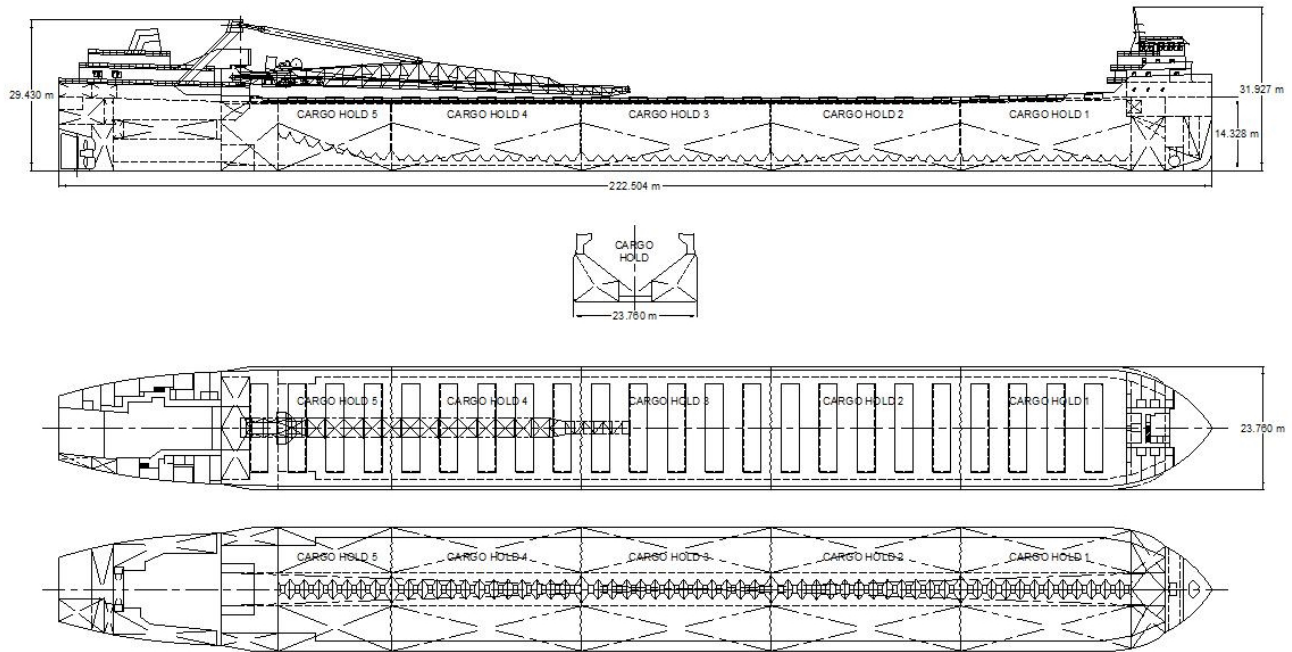


## TECHNICAL SPECIFICATIONS

Vessel Type	Self-Unloading Bulk Carrier
Deadweight (DWT)	29,630 tonnes
Built	1969, converted in 2001
Classification	+ 100 A1
Length Overall	225.504 metres
Breadth Moulded	23.760 metres
Total Hold Capacity (including hatches)	25,325 cubic metres
Gross Tonnage (GT)	20,101 tonnes
Net Tonnage (NT)	6,030 tonnes
Average Unloading Rates (tonnes/hour)	Ore: 5,500   Coal: 4,000

MV *CSL Tadoussac* is one of Canada Steamship Line self-unloading lakers. She was built in 1969 and converted to a self-unloading vessel in 2001.

On March 20, 2007, *CSL Tadoussac* was the featured vessel at the official opening of the Welland Canal for the 2007 season marking the 75th anniversary of the opening of the 4th canal in 1932 by the Canada Steamship Lines steamer Lemoyne and the earliest opening date in the history of the canal.



## DRAFT AND DEADWEIGHT

MARK (IN FW)	DRAFT		DEADWEIGHT	
	Metres	Feet	Tonnes	LT
Midsummer	8.61	28' 3"	30,532	30,051
Seaway	8.08	26' 6"	27,970	27,530

## HOLD CAPACITIES

COMPARTEMENT	Cubic Metres	Cubic Feet
Hold # 1	5,367	189,523
Hold # 2	5,718	201,932
Hold # 3	5,703	201,392
Hold # 4	5,698	201,239
Hold # 5	2,854	100,792
Net Hold Capacity	25,340	894,878

## PRINCIPAL DIMENSIONS

DESCRIPTION	Metres	Feet
Length Overall	218.89	730' 0"
Length B.P.	218.92	718' 3"
Breadth	23.78	77' 11-1/2"
Depth	12.78	41' 11"

## TPC AND TPI (AT SEAWAY DRAFT)

TPC (t/cm)	48.27
TPI (t/in)	122.70

## HATCH DIMENSIONS

LENGTH		WIDTH	
Metres	Feet	Metres	Feet
	11' 7 - 7/8"		55' 9"