



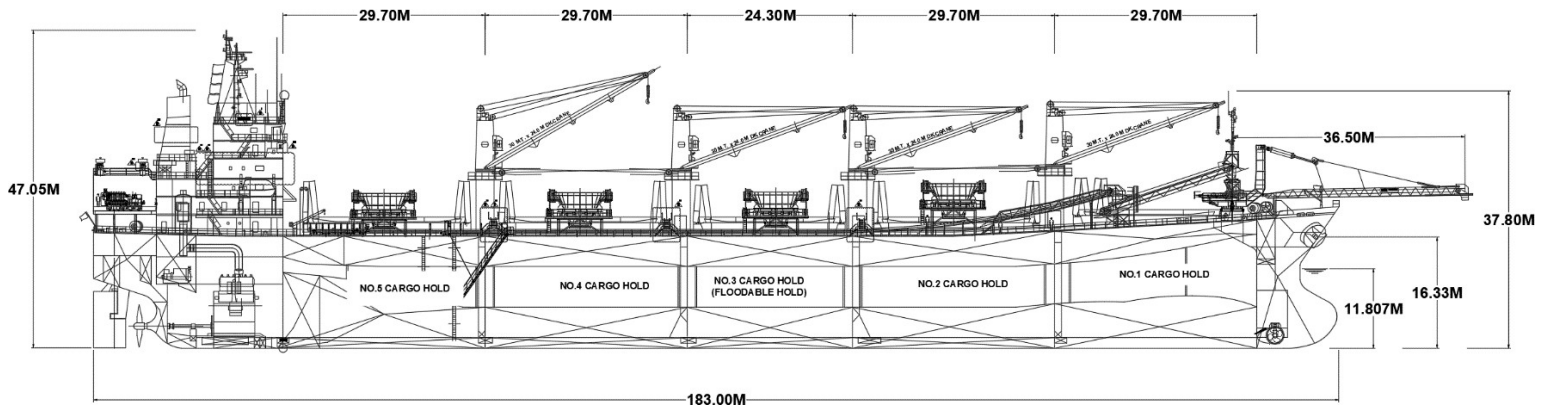
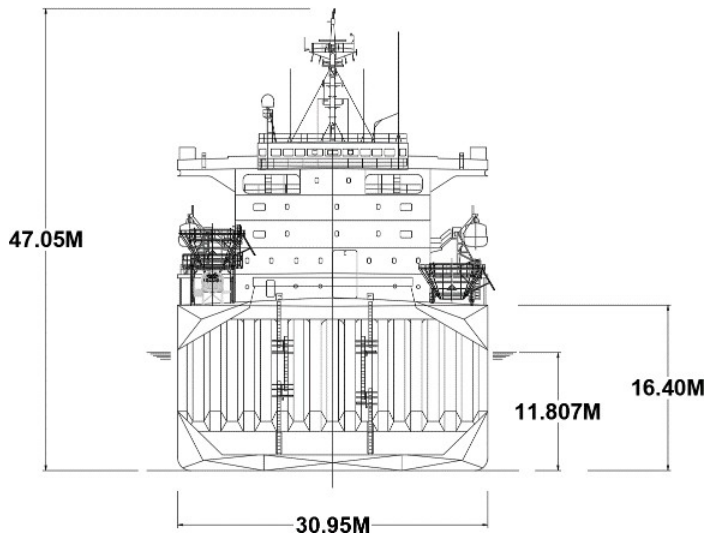
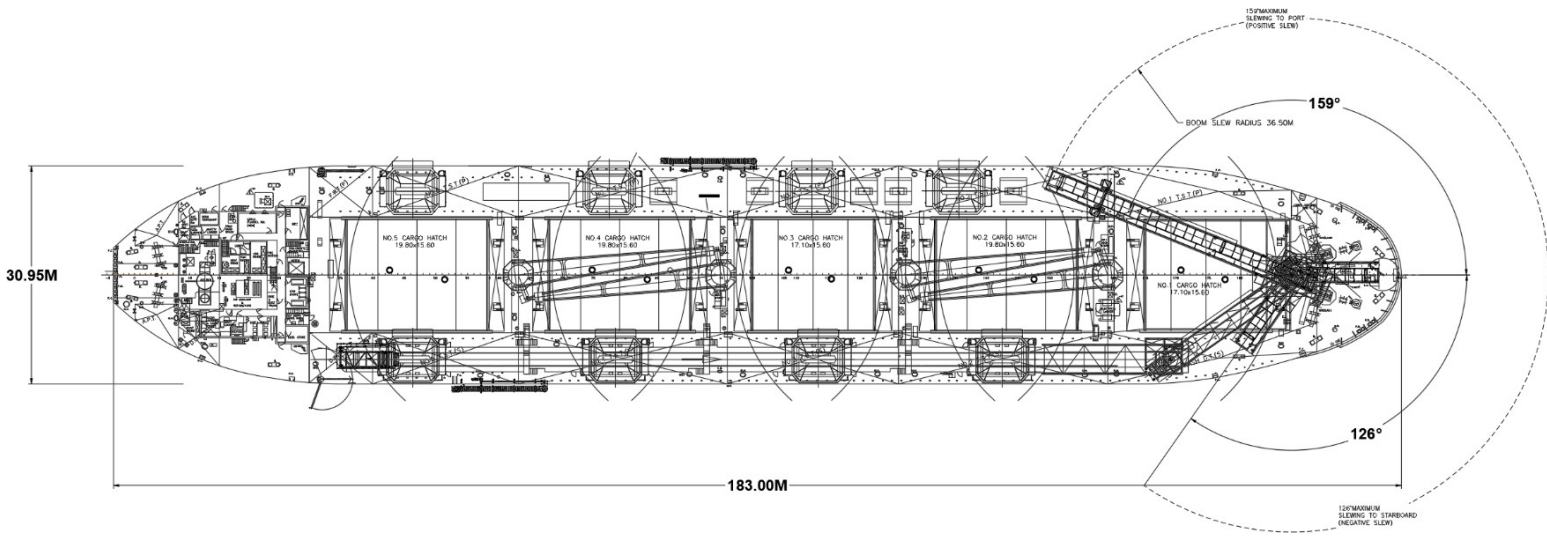
TECHNICAL SPECIFICATION

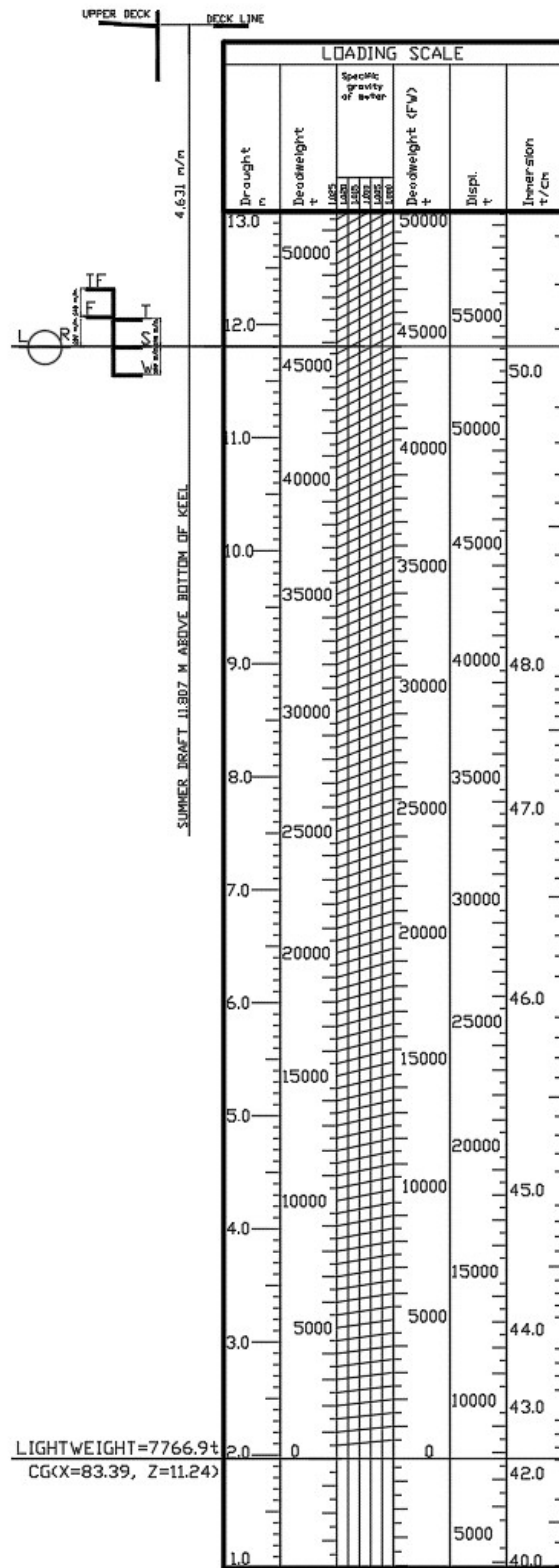
Built	2003 (converted to Hybrid Self-Unloader in 2020)
Classification	LR 100 A1 Bulk Carrier, ESP, L1, LMC, UMS
Length Overall	183 metres
Breadth Moulded	30.95 metres
Depth Moulded	16.40 metres
Total Hold Capacity	58,121 cubic metres
Summer Deadweight (DWT)	45,546 tonnes
Summer Draft	11.81 metres
Gross Tonnage (GT)	25,819 tonnes
Net Tonnage (NT)	15,857 tonnes
Bow Thruster	1,600 kW
Length of Boom	36.50
Discharge Rate (max)	1,200 tonnes/hour

MV *Elanora* is a hybrid self-unloading bulk carrier that operates on the Australian coast. The vessel carries primarily, gypsum, mineral sands, dolomite, sugar, salt and coal.

MV *Elanora* was converted from a bulk carrier to a hybrid self-unloader in 2020. The vessel discharges using four cranes into four deck hoppers. A longitudinal conveyor runs under the deck hoppers to an unloading boom at the forward end of the vessel. The 36.5 m boom can be positioned for discharge into a shore hopper, truck hopper, or directly to ground.

ELANORA





HATCH AND HOLD SPECIFICATIONS

HOLD VOLUMES (CUBIC METRES)

HOLD NUMBER	1	2	3	4	5	TOTAL
Cubic (Grain)	11,807	12,598	10,763	12,572	11,102	58,121
Cubic (Bale)	10,847	12,354	10,562	12,343	10,886	56,992

HOLD OPENINGS (METERS)

NUMBER OF OPENINGS	1	1	1	1	1
Opening Length	17.10	19.80	17.10	19.80	19.80
Opening Width	15.60	15.60	15.60	15.60	15.60
Coaming height above keel	18.40	18.40	18.40	18.40	18.40

HATCH INFORMATION (METERS)

DESCRIPTION	End Folding panels				
Operation	Electr/Hydr				
Hatch Length	20.82	23.09	20.39	23.09	23.09
Hatch Width	16.34	15.93	15.93	15.93	15.93
Hatch top Height above keel	20.35	19.25	19.25	19.25	19.25

CARGO HANDLING EQUIPMENT

Dust Suppression: Bag house dust collectors fitted on hoppers, conveyors transfers and discharge Boom

4 x 30t Electro Hydraulic cranes

5 x 16 m³ grabs

4 x 100 m³ deck hoppers

1 x 1400 mm longitudinal deck conveyor

1 x 1400 mm transfer conveyor

1 x 36.50 m discharge boom

All conveyors covered

Boom Slewing: 159 degrees to port, 126 degrees to Stbd.

Boom Luffing: Horizontal to +18 degrees

Discharge boom spout (2.39 m retracted and 8.9 m extended)

Discharge Rate: 1200 tph

CONSUMPTION (TONNES PER DAY)

	SPEED		MAIN ENGINE HFO		A/E
	Loaded	Ballast	Loaded	Ballast	HFO
Sea	13.5	14.0	25.0	22.0	1.7
Port/ Anchorage			N/A	N/A	3.4
Loading/ Discharge			N/A	N/A	3.4/3.5

All specifications given in good faith but without guarantee.