

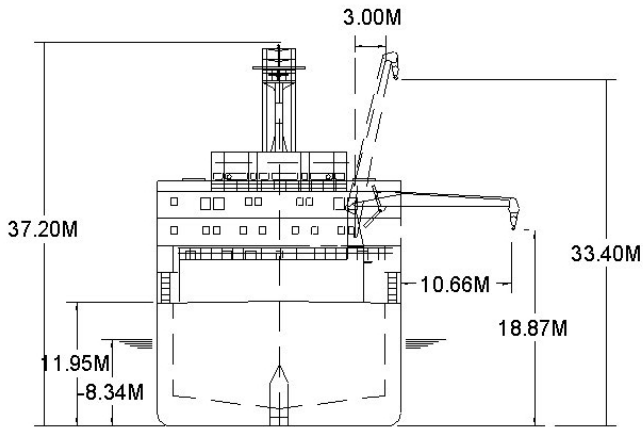
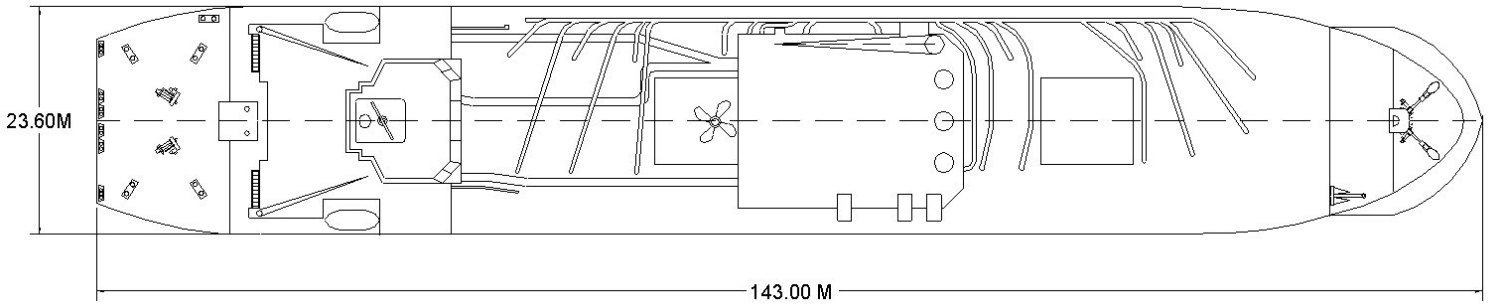


## TECHNICAL SPECIFICATIONS

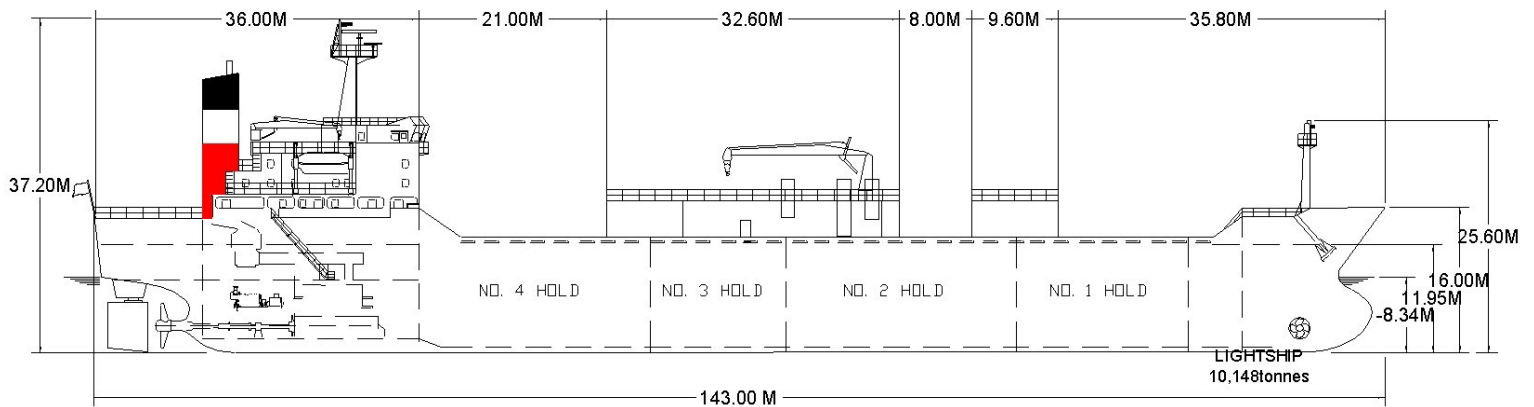
Built	1993
Classification	LLOYDS +100A1, +LMC, UMS, CCS, IWS, LNC (AA) strengthened
Length overall	143.00 metres
Breadth Moulded	25.50 metres
Depth Moulded	11.94 metres
Total Hold Capacity	13,729 cubic metres
Summer Deadweight (DWT)	15,599 tonnes
Draft	8.34 metres
Gross Tonnage (GT)	11,754 tonnes
Net Tonnage (NT)	3,526 tonnes
Bow Thruster	1,200 kW
Discharge Rate (max)	1,200 tonnes/hour

*Goliath* is a pneumatic cement carrier.

# GOLIATH



ASSIGNED DRAFT			
Season	Draft (metre)	Displ. (tonnes)	DWT (tonnes)
TF	8.67	21,339	16,023
F	8.49	21,346	16,030
T	8.50	20,858	15,542
S	8.34	20,915	15,599
W	8.14	20,367	15,051



# PNEUMATIC CEMENT VESSEL

DEADWEIGHT SCALE - MV Goliath

	DRAFT				DISPLACEMENT (tonnes)	TPC (tonnes)	DEADWEIGHT (tonnes)	DRAFT	
	Sea Water		Fresh Water					Sea Water	
	(metres)	(feet)	(metres)	(feet)				(feet)	(metres)
		28		28	22,000			28	
					21,000				
8	26		8	26	20,000	28	15,000	26	8
					19,000		14,000		
7	24		7	24	18,000		13,000	24	7
					17,000		12,000		
6	22		6	22	16,000	27	11,000	22	6
					15,000		10,000		
5	18		5	18	14,000		9,000	18	5
					13,000		8,000		
4	16		4	16	12,000	26	7,000	16	4
					11,000		6,000		
3	14		3	14	10,000		5,000	14	3
					9,000		4,000		
2	12		2	12	8,000	25	3,000	12	2
					7,000		2,000		
	8			8	6,000		1,000	8	
					5,000		0		
	6	2	6	6	5,000	24		6	2

LIGHTSHIP  
5,316 tonnes

DKLINE



## HATCH AND HOLD SPECIFICATIONS

### HOLD VOLUMES (CUBIC METRES)

HOLD NUMBER	1	2	3	4	TOTAL
Hold Volume	2,631	4,234	2,636	4,228	13,629

### HOLD OPENINGS IN METRES

NUMBER OF OPENINGS	1	1	1	1	
Opening Length	1.60	1.60	1.60	1.60	
Opening Width	0.60	0.60	0.60	0.60	
Coaming Height Above Keel	12.00	12.00	12.00	12.00	

## CARGO HANDLING EQUIPMENT

Self-enclosed Positive Feed Pneumatic System

4 Ibau Pneumatic Positive Feed Cement Pumps

8 Ibau Variable-aperture Flow Control Gates

8 Aervener VM Screw Compressors

8 Ibau Rotary Piston Blowers

Ibau Two-way Diverter Valves

### Support machinery:

Main Cargo Crane for Hose Support

1 x Hagglunds 10t SWL Cargo Crane with Max outreach 10.66 t, at 18.9 m Above Keel

Cargo Crane to Assist Connection / Disconnection

1 x Hagglunds 3t SWL Cargo Crane

Discharge Rate: 1,200 tph

## CONSUMPTION (TONNES PER DAY)

	SPEED		MAIN ENGINE HFO		A/E
	Loaded	Ballast	Loaded	Ballast	HFO
Sea	12.8	13.0	25.0	24.0	2.6
Port/ Anchorage			N/A	N/A	2.6
Loading/ Discharge			N/A	N/A	14.5

All specifications given in good faith but without guarantee.