



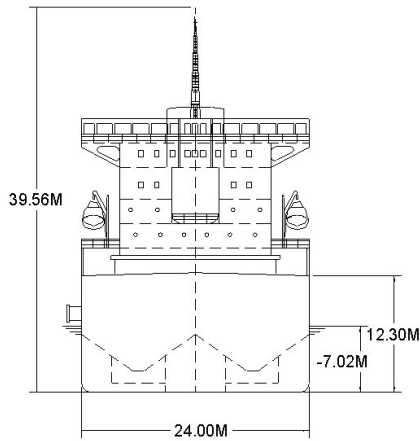
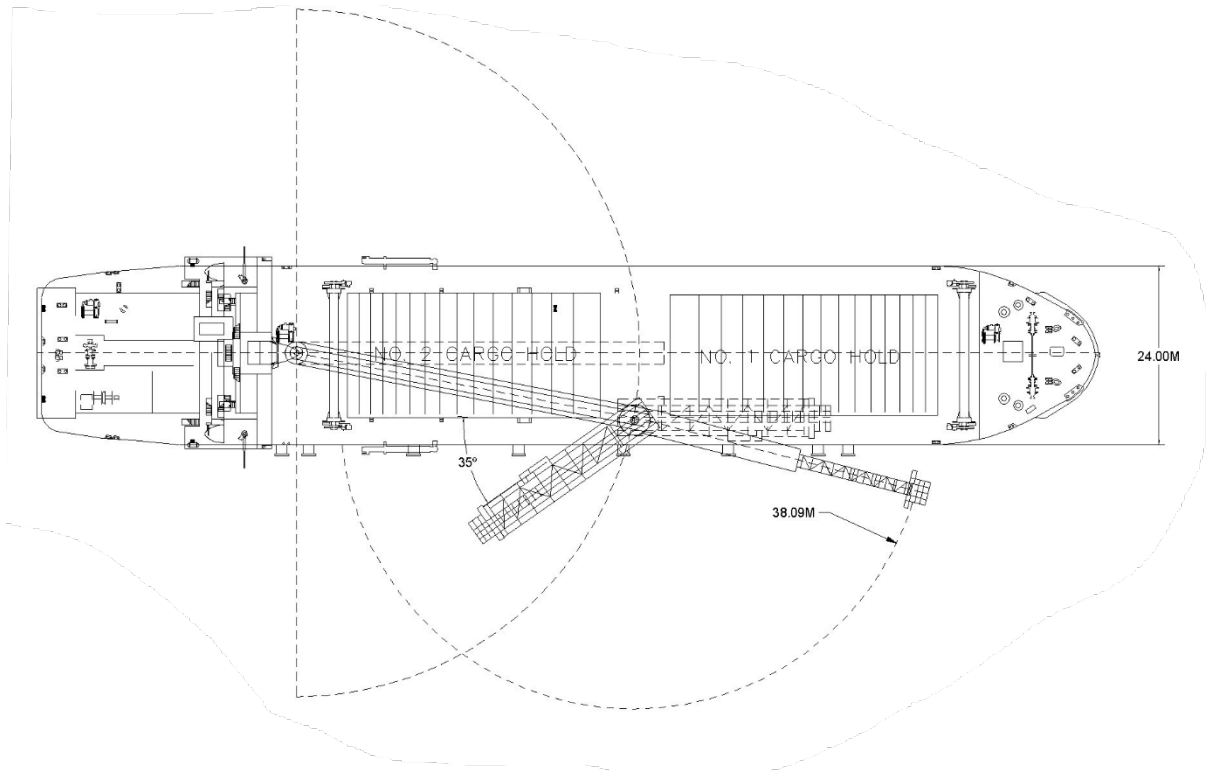
TECHNICAL SPECIFICATIONS

Built	1987 (converted to a transshipment shuttle vessel in 2012)
Classification	LR 100A1, strengthened for heavy cargoes, *IWS, LMC, Self-unloading Bulk Cargo Carrier, LI
Length overall	141.40 metres
Breadth Moulded	24.00 metres
Depth Moulded	12.30 metres
Total Hold Capacity	18,158 cubic metres
Summer Deadweight (DWT)	12,740 tonnes
Draft	7.02 metres
Gross Tonnage (GT)	11,673 tonnes
Net Tonnage (NT)	4,456 tonnes
Bow Thruster	670 kW
Length of Boom	Inner Boom: 50.00 metres
Discharge Rate (max)	4,200 tonnes/hour (with ship loader) 1,500 tonnes/hour (with 50 m boom)

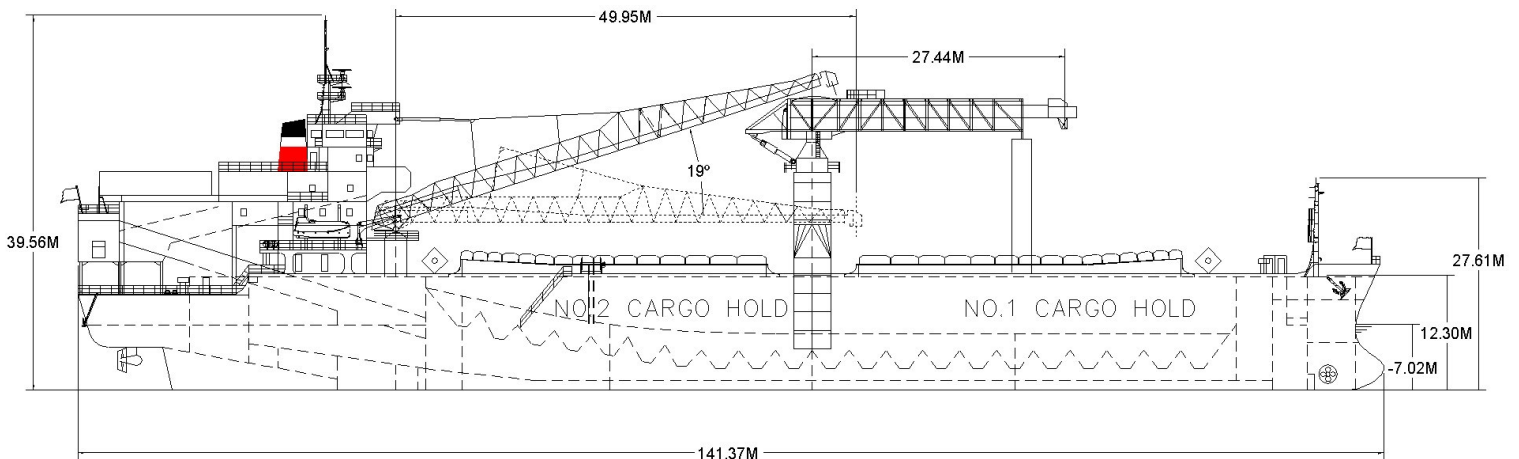
Whyalla is a transshipment shuttle vessel designed for unloading ore into vessels up to cape size.

The vessel is highly maneuverable and fitted with a bow thruster and 2 x Kawasaki Rexpeller Azimuth drives.

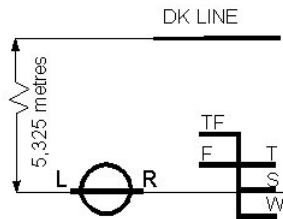
WHYALLA



ASSIGNED DRAFTS			
Season	Draft (metres)	Displ. (tonnes)	DWT (tonnes)
TF	7.31	18,741	13,175
F	7.16	18,300	12,734
T	7.16	18,757	13,192
S	7.02	18,306	12,740
W	6.87	17,855	12,290



TRANSHIPMENT SHUTTLE VESSEL



DEADWEIGHT SCALE - CSL WHYALLA									
DRAFT				DISPLACEMENT	TPC (tonnes)	DEADWEIGHT (tonnes)	DRAFT		
Sea Water		Fresh Water					Sea Water		
(metres)	(feet)	(metres)	(feet)				(metres)	(feet)	
	24		24	20,000		14,000	24		
				19,000		13,000		7	
7		7		18,000	31	12,000	22		
	22		22	17,000		11,000			
				16,000		10,000	20		
6		6	20	15,000	30	9,000		6	
	18		18	14,000		8,000	18		
				13,000		7,000			
5	16	5	16	12,000	29	6,000	16	5	
				11,000		5,000			
	14		14	10,000	28	4,000	14		
4		4		9,000	27	3,000		4	
	12		12	8,000		2,000	12		
				7,000		1,000			
3	10	3	10	6,000	25	0,00	10	3	
				5,000		-1,000			
	8		8	4,000	24	-2,000	8		
2		2						2	
	6		6				6		

LIGHTSHIP 5566.0 t

HATCH AND HOLD SPECIFICATIONS

HOLD VOLUMES (CUBIC METRES)

HOLD NUMBER	1	2				TOTAL
Cubic (Bale)	9,427.00	7,339.50				16,766.50
Cubic (Grain)	10,141.70	8,016.50				18,158.20

HOLD OPENINGS IN METRES

NUMBER OF OPENINGS	1	1			
Opening Length	38.20	36.00			
Opening Width	17.00	17.00			
Coaming Height Above Keel	14.00	14.00			

HATCH INFORMATION (METRES)

DESCRIPTION	End Rolling Panels				
Operation	Electr/Hydr				
Hatch Length	39.00	36.80			
Hatch Width	18.00	18.00			
Hatch Top Height Above Keel	14.45	14.45			

CARGO HANDLING EQUIPMENT

2 Hold Conveyors with Feeder Gates

2 Transfer Conveyors

Forwarding Conveyor

Inner Boom

Telescopic Ship Loader

Dust Suppression: Water Spray at Transfer Points

Ship Loader Fitted with a Telescopic Spout

Inner Boom Luffing: Horizontal to +20 deg.

Inner Boom Slewing: 90 degrees to Port and Starboard.

Ship Loader Luffing: Horizontal to -20 deg.

Ship Loader Slewing: Parked Position to 145 degrees Starboard

CONSUMPTION (TONNES PER DAY)

	SPEED		MAIN ENGINE HFO		A/E
	Loaded	Ballast	Loaded	Ballast	HFO
Sea	9.0	9.5	14.0	14.0	0.0
Port/ Anchorage			N/A	N/A	1.0
Loading/ Discharge			N/A	N/A	1.0/4.5

All specifications given in good faith but without guarantee.