

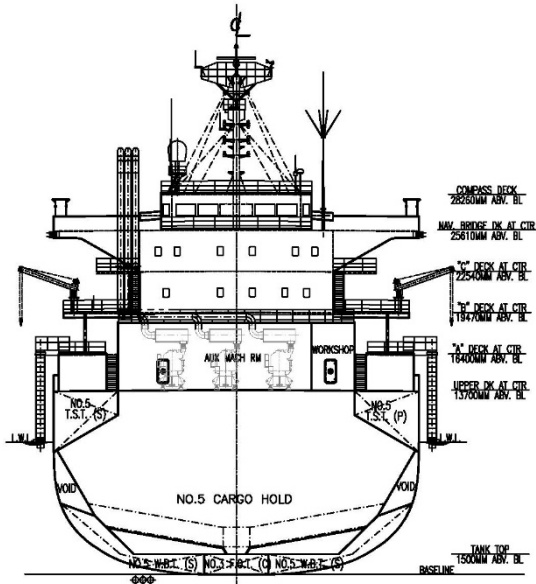
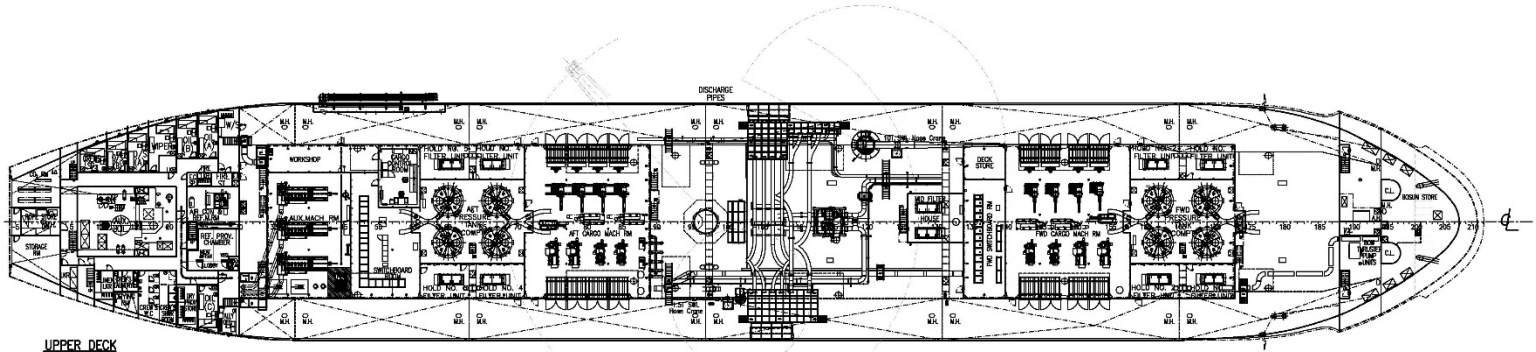


## TECHNICAL SPECIFICATIONS

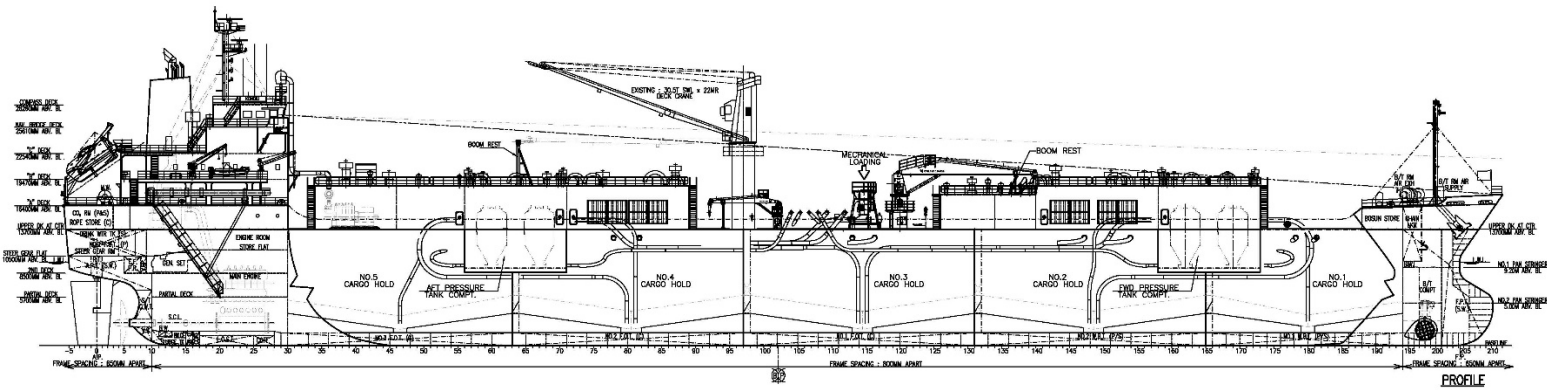
Built	2010 (converted to a cement carrier in 2019)
Classification	ABS ✕A1, E, ✕AMS, ✕ACCU, UWILD, RW, BWT with description 'Cement Carrier'
Length Overall	169.37 metres
Breadth Moulded	27.20 metres
Depth Moulded	13.60 metres
Total Hold Capacity	26,775 cubic metres
Summer Deadweight (DWT)	26,699 tonnes
Draft	9.82 metres
Gross Tonnage (GT)	17,876 tonnes
Net Tonnage (NT)	7,283 tonnes
Thruster	1,300 kW
Discharge Rate (max)	1,200 tonnes/hour

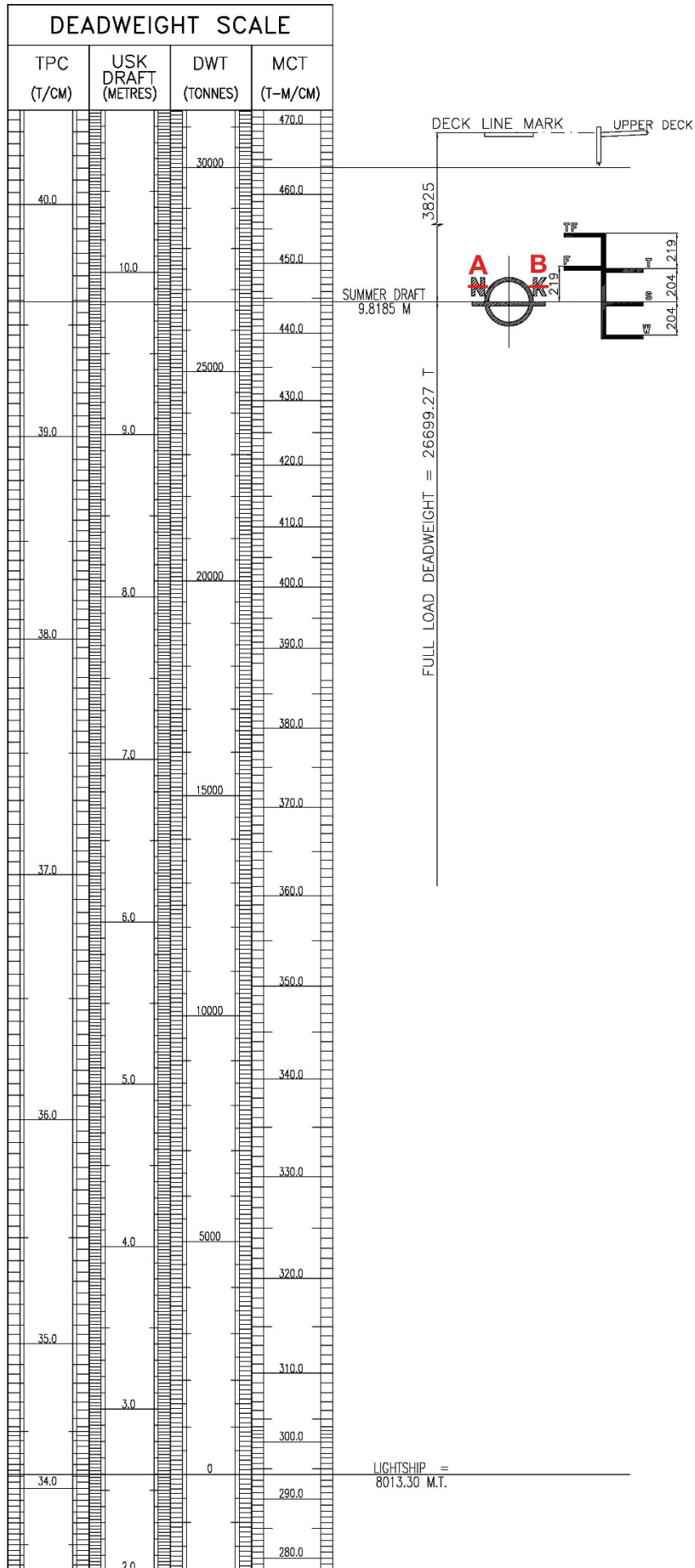
*Wyuna* is a cement carrier designed for pneumatic and mechanical loading and unloading.

The vessel carries cement and fly ash.



ASSIGNED DRAFT			
LOAD LINE	MARK	DRAFT (M)	DEADWEIGHT (M.T.)
TROPICAL FRESH WATER	TF	10.242	27,492.47
FRESH WATER	F	10.038	26,700.12
TROPICAL	T	10.023	27,508.35
SUMMER	S	9.819	26,699.27
WINTER	W	9.615	25,893.00





## HATCH AND HOLD SPECIFICATIONS

### HOLD VOLUMES (CUBIC METRES)

HOLD NUMBER	1	2	3	4	5	TOTAL
Total Volume (m <sup>3</sup> )*	3,545.12	5,411.07	5,689.33	5,426.69	4,809.01	24,881.22
Weight (t) Max	4,254.14	6,493.28	6,827.20	6,512.03	5,770.81	29,857.46

\* Data calculated 1.10 m below Upper Deck

### CARGO HANDLING EQUIPMENT

#### MECHANICAL LOADING

Through midship hopper, rated capacity 1,000 tph with cement at bulk density 1.20 t/m<sup>3</sup>

#### Loading Hopper Air Draft

19.20 m to guardrail | 18.20 m to inlet flange

#### Consumption

2.60 mt/day idle no cargo operation, 2.20 + 8.50 unloading with two AE's Total: 10.70

#### PNEUMATIC LOADING POINT – PORT SIDE

##### Loading rate

4 x lines 300 tph each (1,200 tph total)

##### Manifold Arrangement

4 x lines, 400 NB DIN PN10 flanges

(OD 565, 16 x M24 bolts on 515 PCD)

Distance from bow to centre of loading pipes = 78 m

Distance from ship side to manifold Flange = 3.40 m

##### Air Supply to Shore

2 x Lines Port only, 250 NB DIN PN10 Flanges

(OD 395, 12 x M20 bolts on 350 PCD)

Distance from bow to centre of air lines = 74.90 m

Distance from ship side to manifold Flange = 2.96 m

### CARGO HANDLING EQUIPMENT (CON'T)

#### PNEUMATIC LOADING POINT – STARBOARD SIDE

##### Loading rate

2 x lines 300 tph each (600 tph total)

##### Manifold Arrangement

2 x lines, 400 NB DIN PN10 flanges

(OD 565, 16x M24 bolts on 515 PCD)

Distance from bow to centre of loading pipes = 78.50 m

Distance from ship side to manifold Flange = 5.50 m

#### PNEUMATIC UNLOADING

##### Port and Starboard Side

4 x 400 NB lines @ 300 tph ea or

2 x 400 NB lines @ 600 tph ea

(max, basis cement cargo and subject to shore receival piping arrangement)

Max Air delivery to shore: 30,480 m<sup>3</sup>/hr

#### CARGO HOLD DUST COLLECTORS

2 x 7,200 m<sup>3</sup>/hr per cargo hold

72,000 m<sup>3</sup>/hr total capacity

#### HOSE HANDLING CRANES

1 x 25 tonne @ 24 m on ship centreline

(outreach 10.40 m from ship side)

1 x 10 tonne @ 16 m port side (outreach 11.45 m from ship side)

1 x 1.50 tonne @ 8 m starboard side

(outreach 3.20m from ship side)

## CONSUMPTION (TONNES PER DAY)

	SPEED		MAIN ENGINE HFO		MAIN ENGINE DO		A/E
	Loaded	Ballast	Loaded	Ballast	Loaded	Ballast	HFO
Sea	13.70	14.20	22.50	22.50	0.21	0.21	1.50
Port/ Anchorage			N/A	N/A	N/A	N/A	2.60
Loading/ Discharge			N/A	N/A	N/A	N/A	2.60 / 13.0

All specifications given in good faith but without guarantee.