

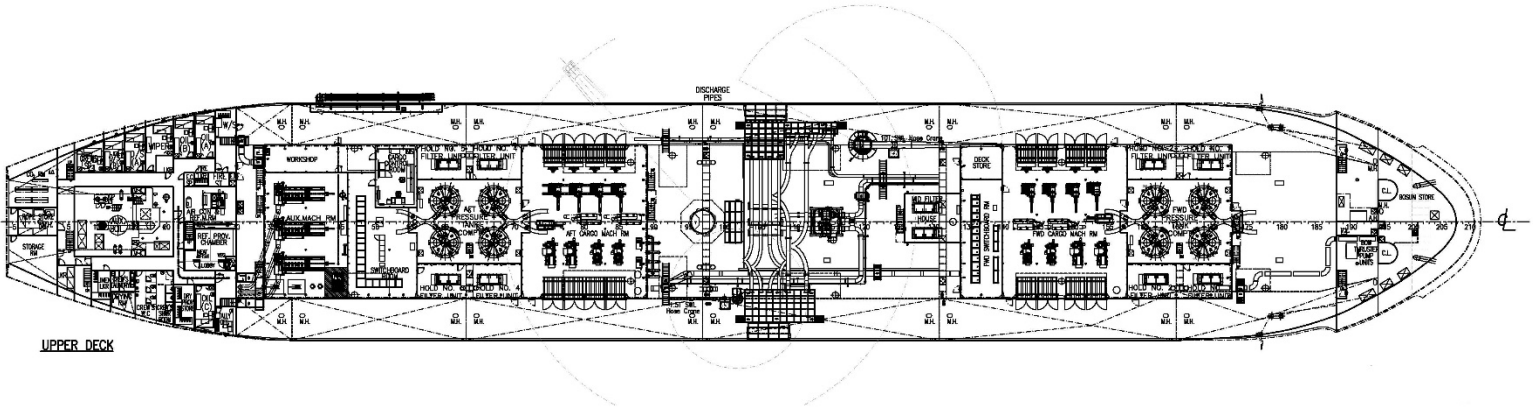


TECHNICAL SPECIFICATIONS

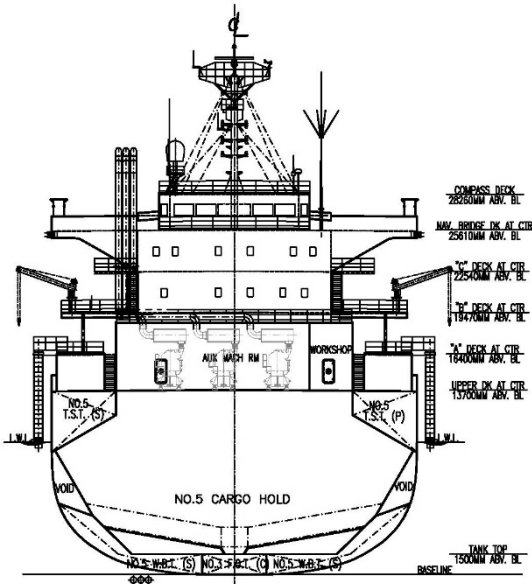
Built	2010 (converted to a cement carrier in 2019)
Classification	ABS ✕A1, E, ✕AMS, ✕ACCU, UWILD, RW, BWT with description 'Cement Carrier'
Length Overall (m)	169.37
Breadth Moulded (m)	27.20
Depth Moulded (m)	13.60
Total Hold Capacity (m ³)	26,775
Deadweight (t)	26,999
Draft (m)	9.819
Gross Tonnage	17,876
Net Tonnage	7,283
Thruster (kW)	1,300
Discharge Rate (max tph)	1,200 tph

Wyuna is a cement carrier designed for pneumatic and mechanical loading and unloading.

The vessel carries cement and fly ash.

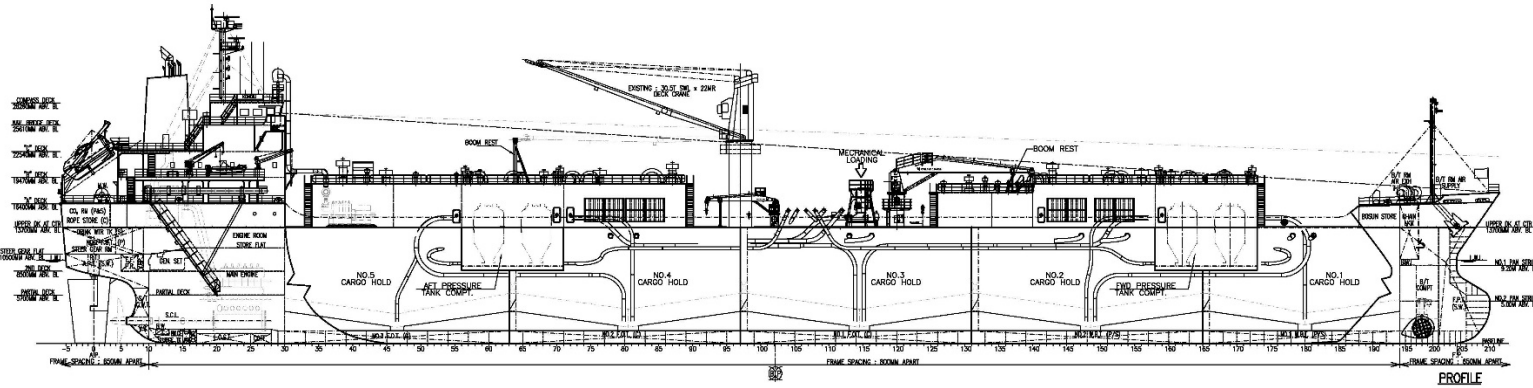


UPPER DECK

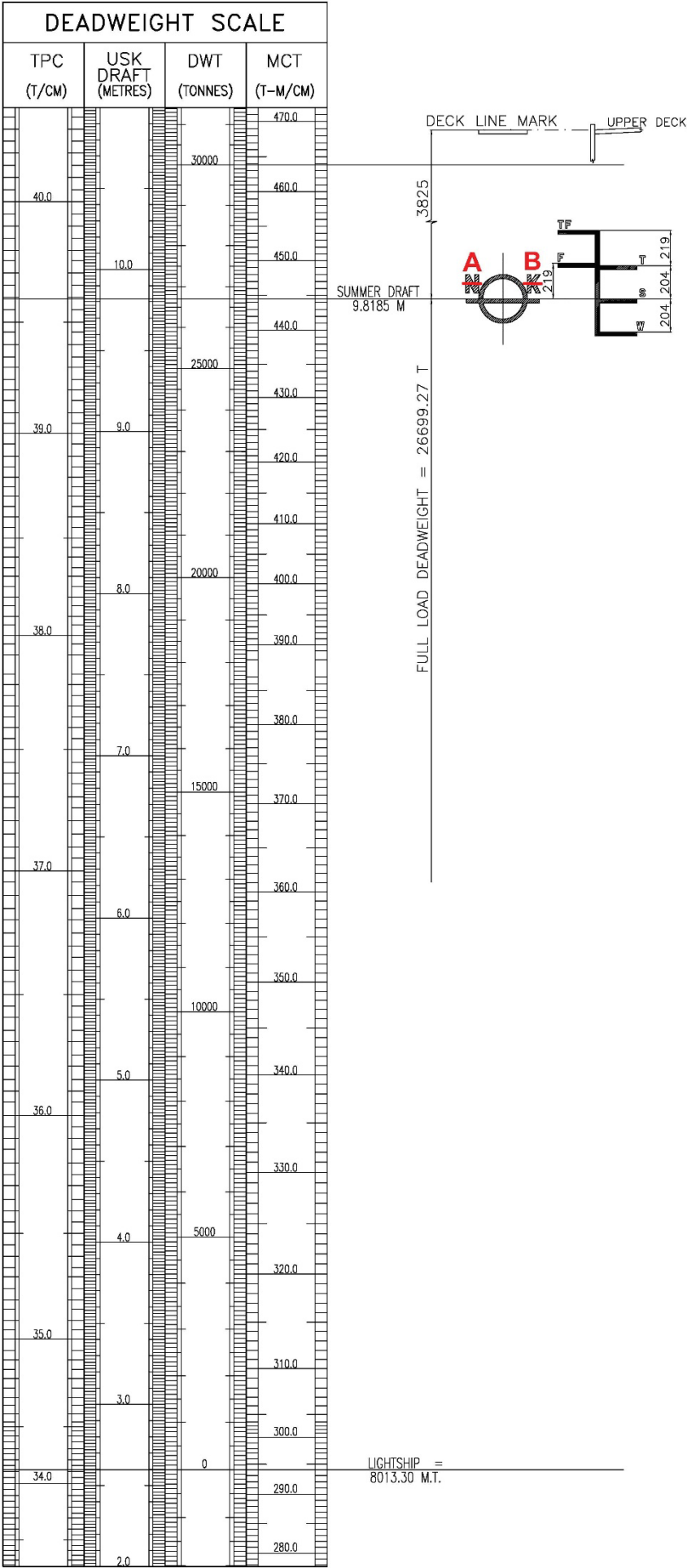


SECTION IWO
AUX MACH RM
(LOOKING AFT)

ASSIGNED DRAFT			
LOAD LINE	MARK	DRAFT (M)	DEADWEIGHT (M.T.)
TROPICAL FRESH WATER	TF	10.242	27,492.47
FRESH WATER	F	10.038	26,700.12
TROPICAL	T	10.023	27,508.35
SUMMER	S	9.819	26,699.27
WINTER	W	9.615	25,893.00



PROFILE



HATCH AND HOLD SPECIFICATIONS

HOLD VOLUMES (CUBIC METRES)

HOLD NUMBER	1	2	3	4	5	TOTAL
Total Volume (m³)*	3,545.12	5,411.07	5,689.33	5,426.69	4,809.01	24,881.22
Weight (t) Max	4,254.14	6,493.28	6,827.20	6,512.03	5,770.81	29,857.46

* Data calculated 1.10 m below Upper Deck

CARGO HANDLING EQUIPMENT

MECHANICAL LOADING

Through midship hopper, rated capacity 1,000 tph with cement at bulk density 1.20 t/m³

Loading Hopper Air Draft

19.20 m to guardrail | 18.20 m to inlet flange

Consumption

2.60 mt/day idle no cargo operation, 2.20 + 8.50 unloading with two AE's Total: 10.70

PNEUMATIC LOADING POINT – PORT SIDE

Loading rate

4 x lines 300 tph each (1,200 tph total)

Manifold Arrangement

4 x lines, 400 NB DIN PN10 flanges

(OD 565, 16 x M24 bolts on 515 PCD)

Distance from bow to centre of loading pipes = 78 m

Distance from ship side to manifold Flange = 3.40 m

Air Supply to Shore

2 x Lines Port only, 250 NB DIN PN10 Flanges

(OD 395, 12 x M20 bolts on 350 PCD)

Distance from bow to centre of air lines = 74.90 m

Distance from ship side to manifold Flange = 2.96 m

CARGO HANDLING EQUIPMENT (CON'T)

PNEUMATIC LOADING POINT – STARBOARD SIDE

Loading rate

2 x lines 300 tph each (600 tph total)

Manifold Arrangement

2 x lines, 400 NB DIN PN10 flanges

(OD 565, 16x M24 bolts on 515 PCD)

Distance from bow to centre of loading pipes = 78.50 m

Distance from ship side to manifold Flange = 5.50 m

PNEUMATIC UNLOADING

Port and Starboard Side

4 x 400 NB lines @ 300 tph ea or

2 x 400 NB lines @ 600 tph ea

(max, basis cement cargo and subject to shore receival piping arrangement)

Max Air delivery to shore: 30,480 m³/hr

CARGO HOLD DUST COLLECTORS

2 x 7,200 m³/hr per cargo hold

72,000 m³/hr total capacity

HOSE HANDLING CRANES

1 x 25 tonne @ 24 m on ship centreline

(outreach 10.40 m from ship side)

1 x 10 tonne @ 16 m port side (outreach 11.45 m from ship side)

1 x 1.50 tonne @ 8 m starboard side

(outreach 3.20m from ship side)

CONSUMPTION (TONNES PER DAY)

	SPEED		MAIN ENGINE HFO		MAIN ENGINE DO		A/E
	Loaded	Ballast	Loaded	Ballast	Loaded	Ballast	HFO
Sea	13.70	14.20	22.50	22.50	0.21	0.21	1.50
Port/ Anchorage			N/A	N/A	N/A	N/A	2.60
Loading/ Discharge			N/A	N/A	N/A	N/A	2.60 / 13.0

All specifications given in good faith but without guarantee.