



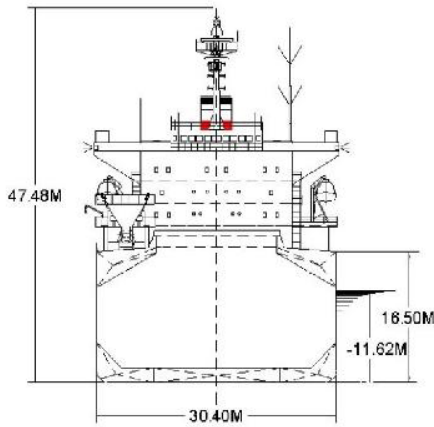
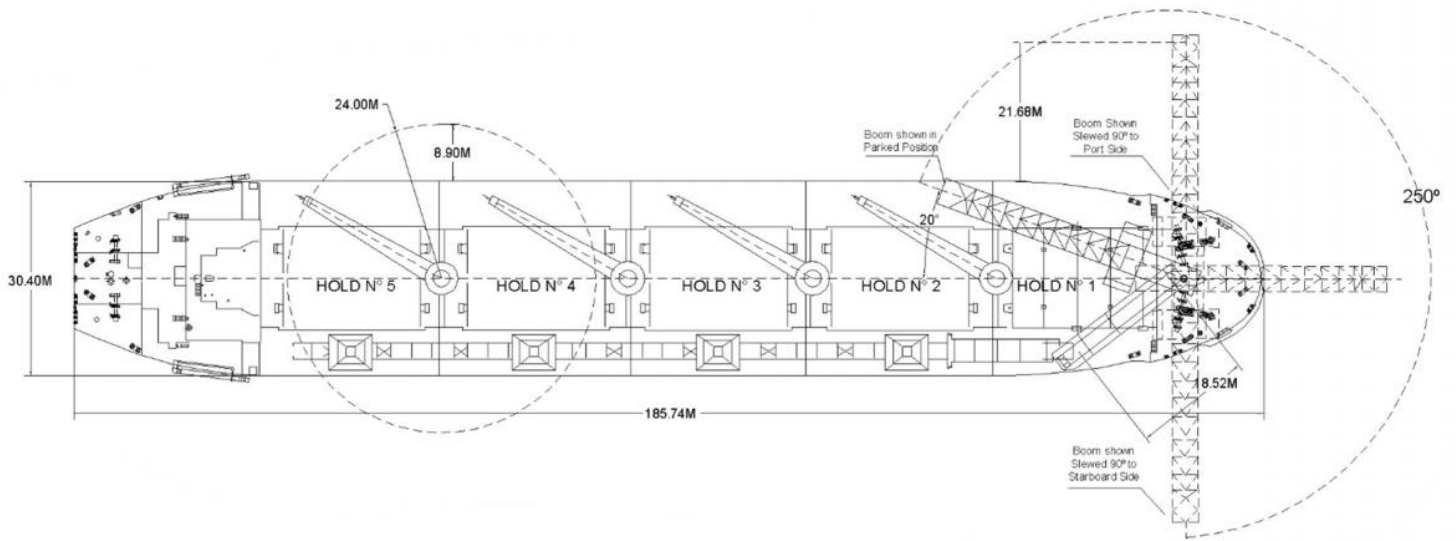
TECHNICAL SPECIFICATIONS

| | |
|---------------------------------------|--|
| Built | 1999 (converted to hybrid self-unloader in 2011) |
| Classification | LR 100 A1 Bulk Carrier, ESP, L1, LMC, UMS |
| Length overall (m) | 185.74 |
| Breadth Moulded (m) | 30.40 |
| Depth Moulded (m) | 16.50 |
| Total Hold Capacity (m ³) | 57,208.40 |
| Deadweight (t) | 45,127 |
| Draft (m) | 11.62 |
| Gross Tonnage | 26,010 |
| Net Tonnage | 14,969 |
| Bow Thruster (kW) | 1,600 |
| Length of Boom | 36.50 |
| Discharge Rate (max tph) | 1,200 |

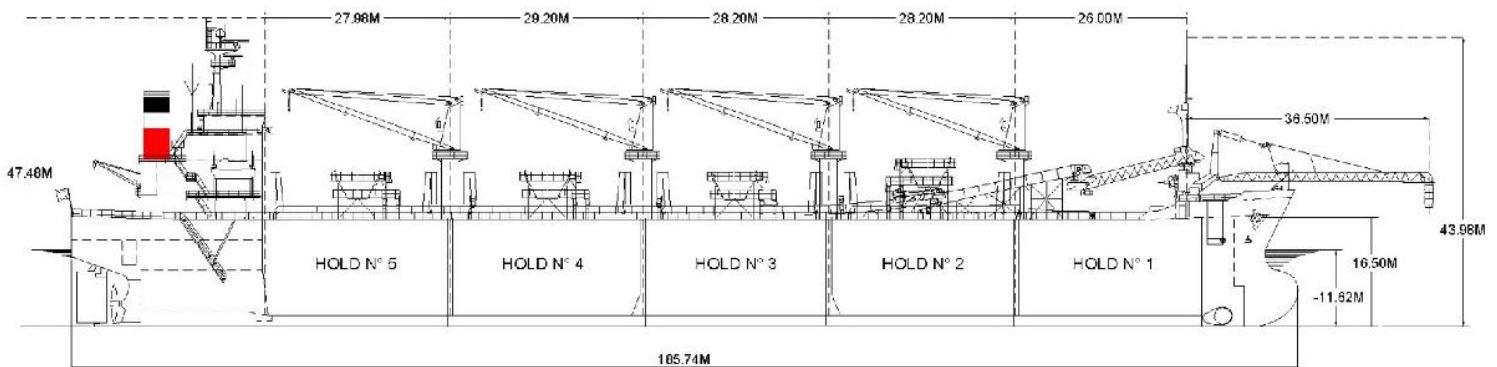
MV *Adelle* is a hybrid self-unloading bulk carrier. The vessel carries primarily, gypsum, mineral sands, dolomite, sugar, salt and coal.

MV *Adelle* was converted from a bulk carrier to a hybrid self-unloader in 2011. The vessel discharges using four cranes into four deck hoppers. A longitudinal conveyor runs under the deck hoppers to an unloading boom at the forward end of the vessel. The 36.5 m boom can be positioned for discharge into a shore hopper, truck hopper, or directly to ground.

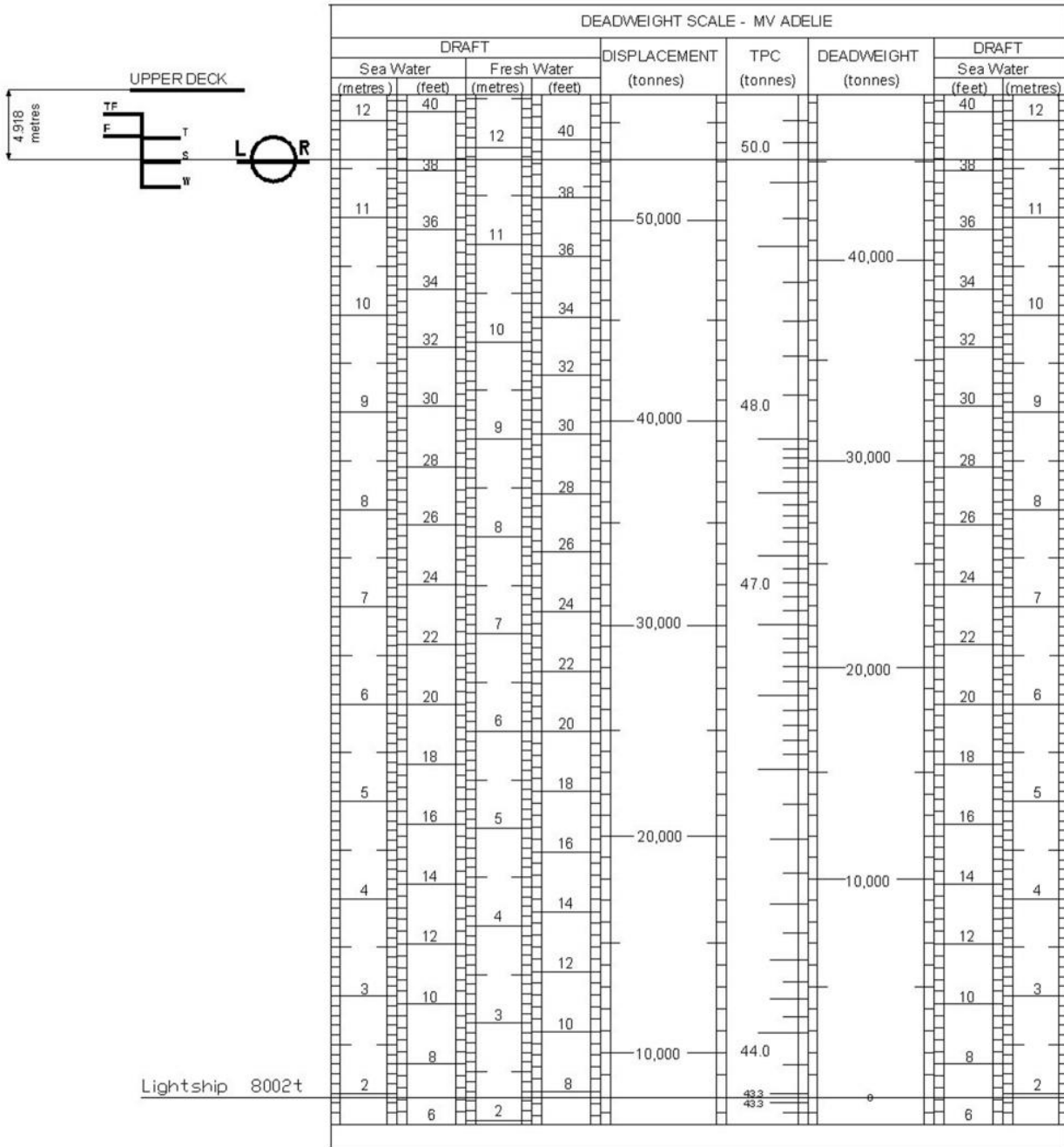
ADELIE



| ASSIGNED DRAFT | | | |
|----------------|---------------|----------------|--------------|
| Season | Draft (metre) | Displ (tonnes) | DWT (tonnes) |
| TF | 12.11 | 55,673 | 47,671 |
| F | 11.87 | 54,459 | 46,457 |
| T | 11.84 | 54,339 | 46,337 |
| S | 11.60 | 53,129 | 45,127 |
| W | 11.36 | 51,925 | 43,923 |



SELF-UNLOADER



HATCH AND HOLD SPECIFICATIONS

HOLD VOLUMES (CUBIC METRES)

| HOLD NUMBER | 1 | 2 | 3 | 4 | 5 | TOTAL |
|---------------|-----------|-----------|-----------|-----------|-----------|-----------|
| Cubic (Grain) | 10,361.60 | 12,199.40 | 11,731.10 | 12,193.60 | 10,722.50 | 57,208.20 |
| Cubic (Bale) | 10,015.10 | 11,844.60 | 11,392.00 | 11,814.00 | 10,499.20 | 55,564.90 |

HOLD OPENINGS (METRES)

| NUMBER OF OPENINGS | 1 | 1 | 1 | 1 | 1 |
|---------------------------|-------|-------|-------|-------|-------|
| Opening Length | 20.00 | 20.80 | 20.80 | 20.80 | 20.80 |
| Opening Width | 15.30 | 15.30 | 15.30 | 15.30 | 15.30 |
| Coaming Height Above Keel | 18.03 | 18.03 | 18.03 | 18.03 | 18.03 |

HATCH INFORMATION (METRES)

| DESCRIPTION | End Folding panels | | | | |
|-----------------------------|--------------------|-------|-------|-------|-------|
| Operation | Electr/Hydr | | | | |
| Hatch Length | 20.44 | 21.11 | 21.11 | 21.11 | 21.11 |
| Hatch Width | 15.61 | 16.15 | 16.15 | 16.15 | 16.15 |
| Hatch Top Height Above Keel | 18.70 | 18.70 | 18.70 | 18.70 | 18.70 |

CARGO HANDLING EQUIPMENT

Dust Suppression: Bag House dust collectors fitted on hoppers, conveyors transfers and discharge Boom

4 x 30t Electro Hydraulic cranes

4 x 12 m³ grabs and 2 x 16 m³ grabs

4 x 100 m³ deck hoppers

4 x 1400 mm belt feeders

1 x 1400 mm longitudinal deck conveyor

All conveyors covered

1 x 1400 mm transfer conveyor

1 x 36.50 m discharge boom

Boom Slewing: 170 degrees to port, 125 degrees to Stbd.

Boom Luffing: Horizontal to +18 degrees

7.5 m discharging chute fitted on discharge boom

Discharge Rate: 1200 tph

CONSUMPTION (TONNES PER DAY)

| | SPEED | | MAIN ENGINE HFO | | A/E |
|-----------------------|--------|---------|-----------------|---------|---------|
| | Loaded | Ballast | Loaded | Ballast | HFO |
| Sea | 13.5 | 14.0 | 25.0 | 22.0 | 0.0 |
| Port/ Anchorage | | | N/A | N/A | 3.4 |
| Loading/ Discharge | | | N/A | N/A | 3.4/3.5 |

All specifications given in good faith but without guarantee.