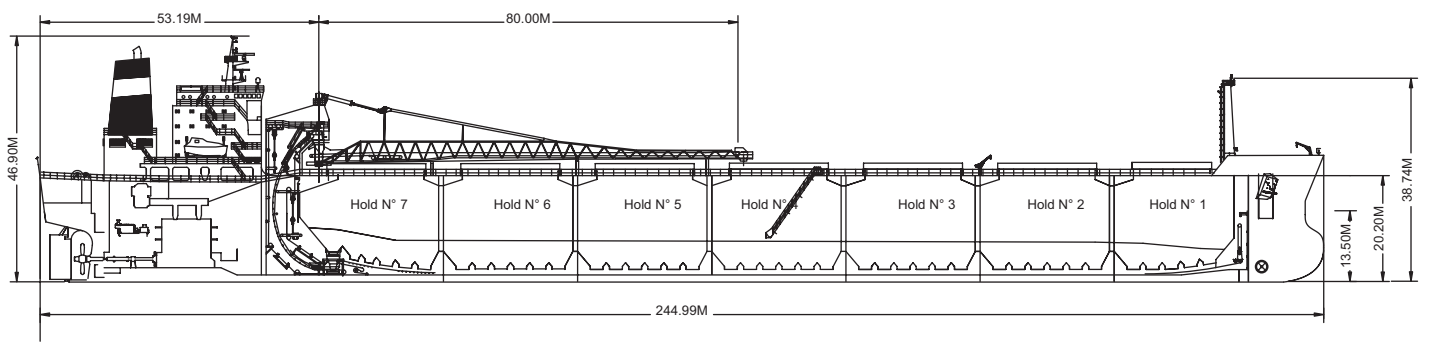
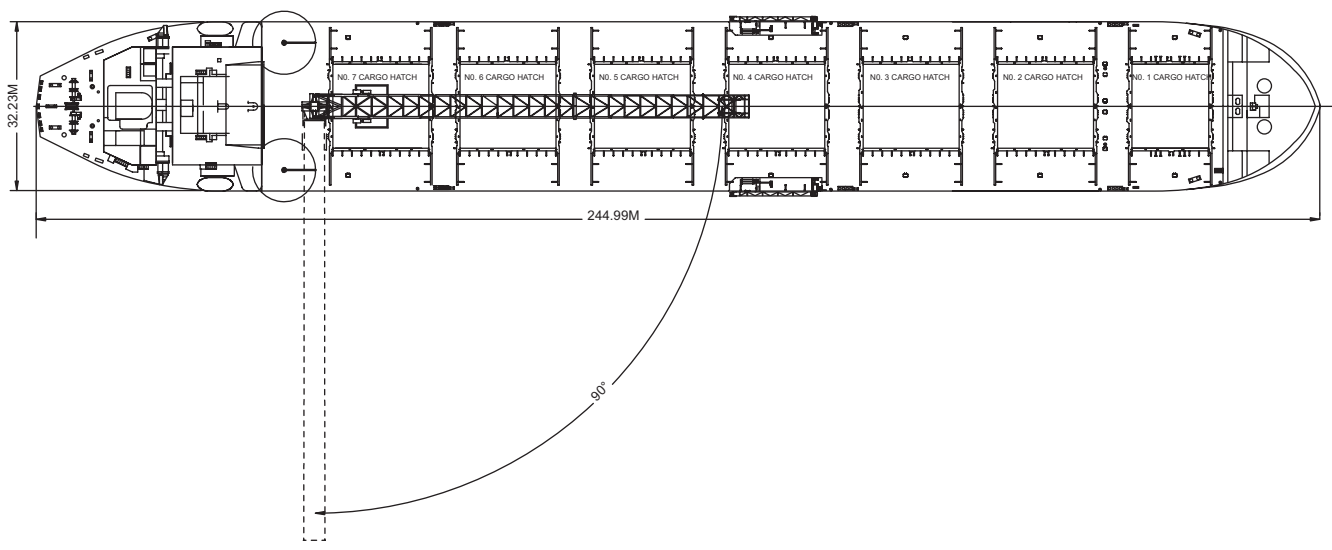
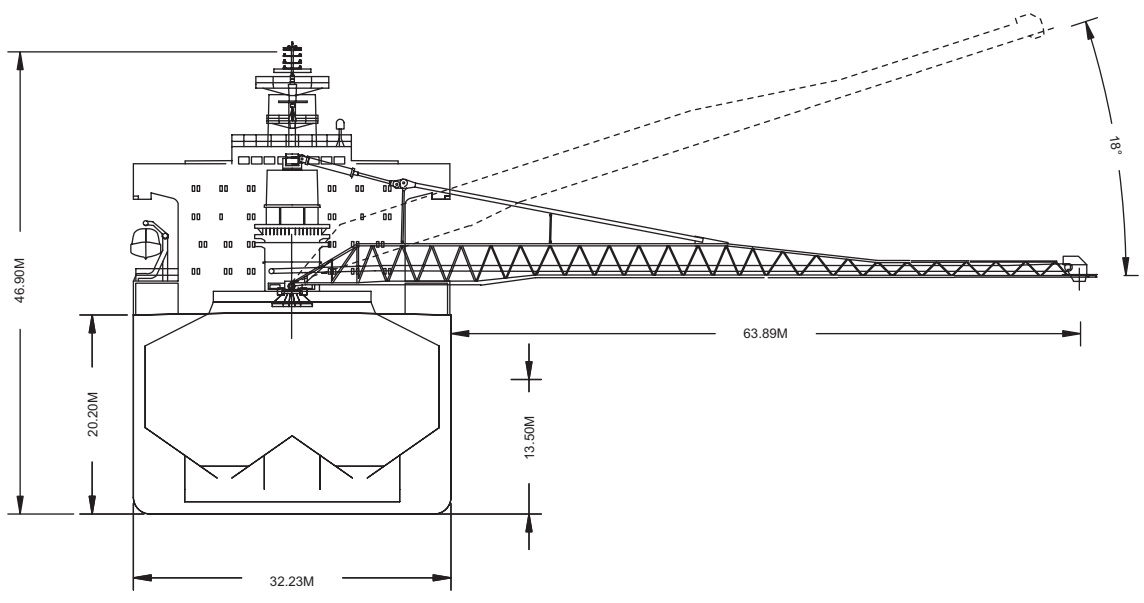




Loading at the Orca Quarry, Vancouver Island.

Built	1982, rebuilt with a new forebody in 2006
Classification	Lloyds+100A1, Bulk Carrier,ESP, Shipright (SDA,FDA,CM)+LMC,UMS	
Length Overall	244.99 metres
Breadth Moulded	32.23 metres
Depth Moulded	20.20 metres
Total Hold Capacity (including structure)	75,243.81 cubic metres
Deadweight	74,517.03 tonnes
Draft	13.50 metres
Gross Tonnage	45,740.00 tonnes
Net Tonnage	17,223.00 tonnes
Bow Thruster	1500.00 kW
Length of Boom	80.00 metres
Discharge Rate (design)	Coal 4,200.00 tonnes/hr
	Gypsum 4,500.00 tonnes/hr
	Stone 5,000.00 tonnes/hr
	Iron Ore 6,000.00 tonnes/hr
	Maximum 6,000.00 tonnes/hr



0981-04 04/25/06

Air Drafts												
(metres)												
Draft Condition	Stem	Foremast	Hatches			Cargo Gear	Main Mast		Funnel	Stern	Other Obstruction	Maximum
			Forward	Midship	Aft		Deployed	Lowered				
Keel	24.10	38.74	22.15	22.15	22.15	35.45	46.90	46.40	42.55	19.81	N/A	46.90
Light Ship	23.13	37.50	20.73	19.57	18.39	31.52	42.71	42.21	38.11	15.05	N/A	42.71
Normal Ballast 50% Bunker	16.75	31.33	14.69	14.38	14.07	27.33	38.71	38.21	34.29	11.47	N/A	37.81
Fully Loaded 50% Bunker	10.64	25.28	8.68	8.65	8.62	21.92	33.36	32.86	29.00	6.25	N/A	33.36

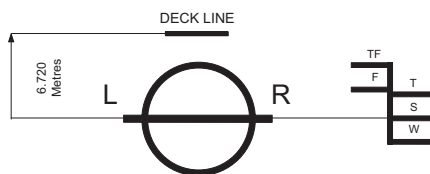
Hatch and Hold Specifications									
Hold Number	1	2	3	4	5	6	7	TOTAL	
Hold Volumes (cubic metres)									
Cubic	8,994.76	11,135.97	11,139.83	11,139.79	11,139.78	11,139.77	10,177.69	74,867.59	
Maximum Grain	9,039.96	11,191.93	11,195.81	11,195.77	11,195.76	11,195.75	10,228.84	75,243.82	
Grain in way of Hatch	45.20	55.96	55.98	55.98	55.98	55.98	51.15	376.23	
Hold Openings (metres)									
Number of Openings	1	1	1	1	1	1	1	7	
Opening Length	14.63	18.29	18.29	18.29	18.29	18.29	16.46		
Opening Width	16.00	16.00	16.00	16.00	16.00	16.00	16.00		
Opening Width (Extra)	17.10	17.10	17.10	17.10	17.10	17.10	17.10		
Coaming Height above Keel	21.50	21.50	21.50	21.50	21.50	21.50	21.50		
Hatch Information (metres)									
Description	Side Rolling Panels	Side Rolling Panels	Side Rolling Panels	Side Rolling Panels	Side Rolling Panels	Side Rolling Panels	Side Rolling Panels	Side Rolling Panels	
Operation	Hydraulic	Hydraulic	Hydraulic	Hydraulic	Hydraulic	Hydraulic	Hydraulic	Hydraulic	
Hatch Length	14.97	18.63	18.63	18.63	18.63	18.63	18.63	16.80	
Hatch Width	16.34	16.34	16.34	16.34	16.34	16.34	16.34	16.34	
Hatch Top Height above Keel	22.15	22.15	22.15	22.15	22.15	22.15	22.15	22.15	

Cargo Handling Equipment
• Fixed type conveyor along boom
• Two 2.6m/s hold conveyors
• Two 2.5m/s transfer conveyors
• One 3.6m/s boom conveyor
• One 4.32m/s 'C' loop conveyor
• Tunnel belts 2.135m wide
• Boom belt 1.981m wide
• Transfer belt 2.135m wide
• All belts have 35 degree trough
• Dust Suppression: Boom and transfer points are filled with positive air pressure dust collectors plus water sprayers on the boom and foam sprayers in the transfers.
• Discharge Rate: Coal4,200 tonnes/hr Ore6,000 tonnes/hr
• Maximum Boom Outreach: 63.89 metres

Speed Consumption					
	Speed		Consumption		
	Loaded	Ballast	Loaded	Ballast	Port
At Sea	13.00	14.00	35.00	35.00	N/A
Loading					2.80
Discharge					7.60

For more information on this ship please visit www.cslships.com





ASSIGNED DRAFTS			
Season	Draft (metre)	Displ. (tonnes)	DWT (tonnes)
TF	14.10	92,880	76,503
F	13.81	90,886	74,509
T	13.78	92,926	76,549
S	13.50	90,894	74,517
W	13.22	88,866	72,489

Light Ship
16,377 tonnes

DEADWEIGHT SCALE									
DRAFT				DISPLACEMENT (tonnes)	TPC (tonnes)	DEADWEIGHT (tonnes)	DRAFT		
Sea Water		Fresh Water					Sea Water		
(metre)	(feet)	(metre)	(feet)				(feet)	(metre)	
	58		58	120,000					
17	56	17	56			100,000	56	17	
16	54	16	54	110,000			54	16	
	52		52				90,000		52
15	50	15	50	100,000			50	15	
	48		48				80,000		48
14	46	14	46				46	14	
13	44	13	44	90,000	72		44	13	
	42		42				70,000		42
12	40	12	40	80,000			40	12	
	38		38				60,000		38
11	36	11	36	70,000	70		36	11	
	34		34				50,000		34
10	32	10	32				32		
9	30	9	30	60,000			30	9	
	28		28				40,000		28
8	26	8	26	50,000	69		26	8	
	24		24				30,000		24
7	22	7	22				22		
6	20	6	20	40,000	68		20	6	
	18		18				20,000		18
5	16	5	16	30,000	67		16	5	
	14		14				10,000		14
4	12	4	12	20,000	66		12	4	
	10		10				0		10
3	10	3	10		65		10	3	
2	8	2	8	10,000			8	2	
	6		6						6

0981-04 06/13/06



For more information on this ship please visit www.cslships.com