



## TECHNICAL SPECIFICATIONS

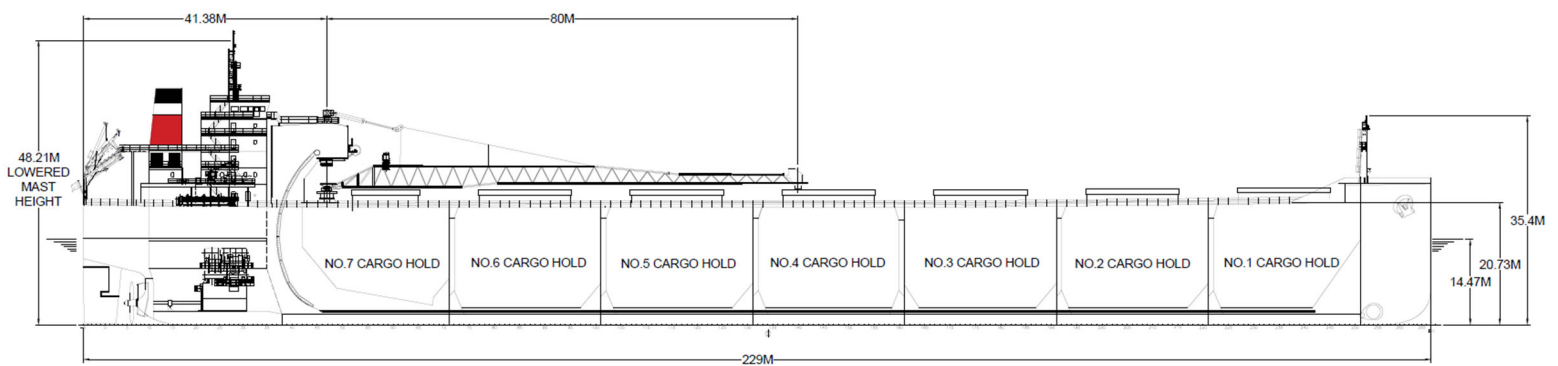
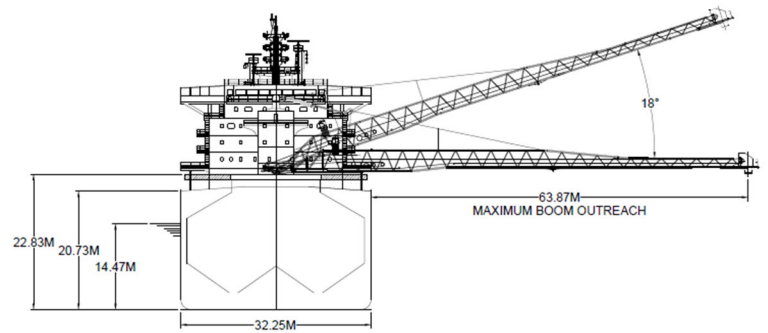
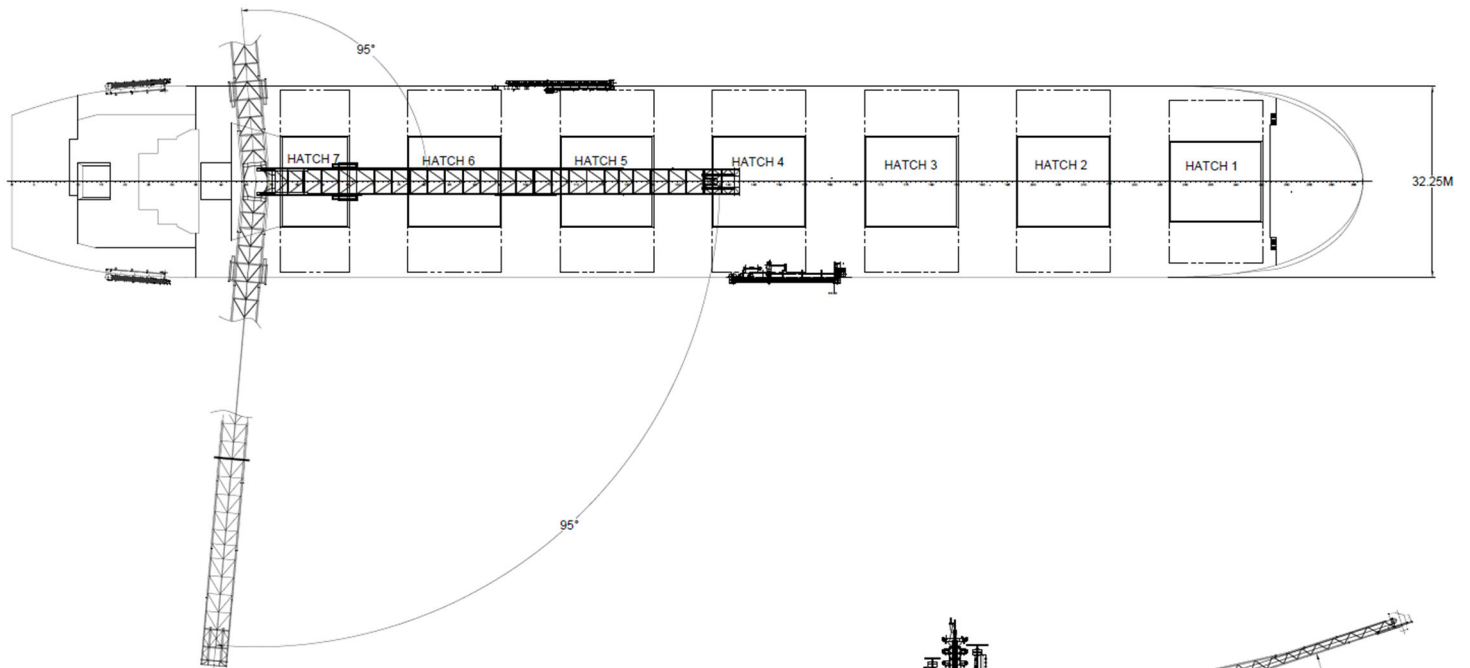
Built	2015
Classification	Lloyd's Register
Length Overall (m)	229.00
Length Between Perps (m)	225.30
Breadth Moulded (m)	32.26
Depth Moulded (m)	20.00
Total Hold Capacity (m <sup>3</sup> ) (including hatches)	72,276
Deadweight (t)	77,339
Draught Summer (m)	14.467
Gross Tonnage	44,408
Net Tonnage	20,345
Bow Thruster (kW)	1,600
Length of Boom (m)	80.00
Discharge Rate: Coal (mt/hr)	4,250
Discharge Rate: Gypsum, Aggregates, Iron Ore (mt/hr)	5,000

*CSL Kajika* is a self-unloading bulk carrier with seven cargo holds, strengthened for heavy cargoes, loaded through seven hatches.

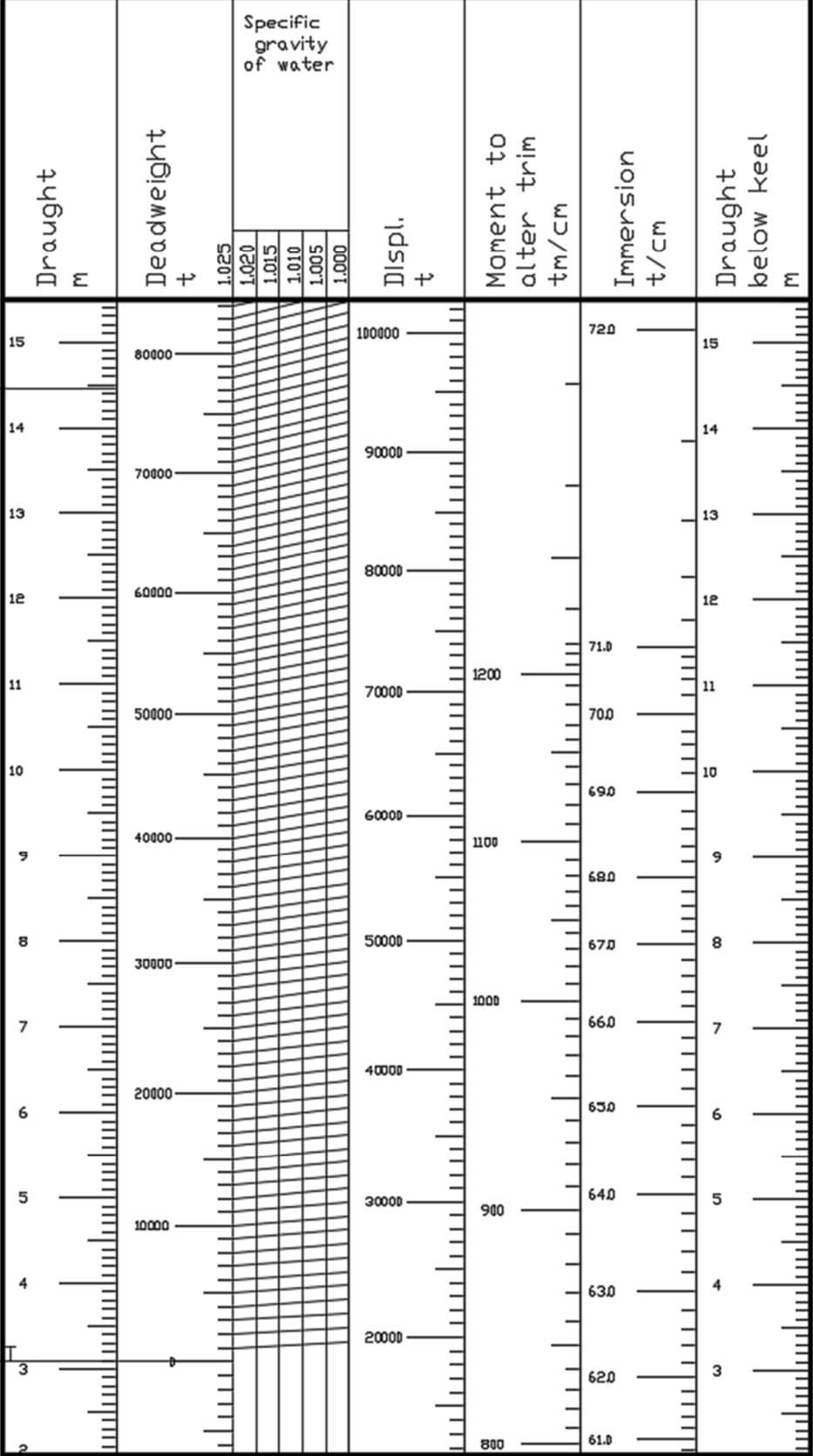
The discharge is gravity fed through the gate system via two longitudinal conveyor belts feeding to a central C-Loop that lifts the cargo onto the boom conveyor and ashore.

Discharge rate is variable to the maximum of 5,000 metric tonnes per hour and 5,300 cubic metres per hour for volumetric cargoes.

Using the flexible boom and precise control of the discharge rate makes the vessel suitable for discharge to almost any receiving facility including enclosed hoppers, barges, and trucks. The vessel is double hulled, including bunker tanks, and utilizes a bow thruster with Mewis duct and rudder to give excellent handling characteristics.



LOADING SCALE



LIGHTSHIP 18215.8 T

## HATCH AND HOLD SPECIFICATIONS

## HOLD VOLUMES (CUBIC METRES)

HOLD NUMBER	1	2	3	4	5	6	7	TOTAL
Cubic (Maximum)	9,253	10,922	11,290	10,499	10,913	10,888	8,508	72,276

## HOLD OPENINGS (METRES)

NUMBER OF OPENINGS	1	2	3	4	5	6	7
Opening Length	15.48	15.48	15.48	15.48	15.48	15.48	11.18
Opening Width	13.30	15.00	15.00	15.00	15.00	15.00	15.00
Coaming Height Above Keel	22.40	22.12	21.95	21.95	21.95	21.95	21.95

## HATCH INFORMATION (METRES)

DESCRIPTION	Side-Rolling Panels						
Operation	Hydraulic						
Hatch Length	15.83	15.83	15.83	15.83	15.83	15.83	11.53
Hatch Width	13.68	15.38	15.38	15.38	15.38	15.38	15.38
Hatch Top Height Above Keel (When Hatch Cover Open)	23.28	23.00	22.83	22.83	22.83	22.83	22.83

## CARGO HANDLING EQUIPMENT

Two Hold Conveyors
Two Transfer Conveyors
One Boom Conveyor
One "C" Loop Conveyor
All conveyors are driven by variable speed motors, gears and couplings
Discharging is done through hydraulically operated gates fitted to outlet hoppers in the bottom of cargo holds
Boom Belt - Wide: 1,981 mm
Tunnel Belts - Wide: 2,134 mm
Transfer Belts - Wide: 2,134 mm
"C" Loop Belt - Wide: 2,286/2,438 mm
Dust Suppression: dust collectors plus water sprayers on the boom and foam sprayers in the transfers
Discharge rate 5,300 m <sup>3</sup> /hr or 5000 mt/hr whichever is first reached
Maximum Boom outreach: 80 m

## SPEED | CONSUMPTION

	SPEED		CONSUMPTION		
	Loaded	Ballast	Loaded	Ballast	Port
At Sea	13.00	13.50	27.00	24.00	N/A
Loading					2.50
Discharge					6.00

## ASSIGNED DRAFT

Season	Draft (Metres)	Displacement (Tonnes)	DWT (Tonnes)
TF	15.100	97,581	79,365
F	14.799	95,466	77,250
T	14.768	97,629	79,413
S	14.467	95,463	77,247
W	14.166	93,297	75,081

All specifications given in good faith but without guarantee.