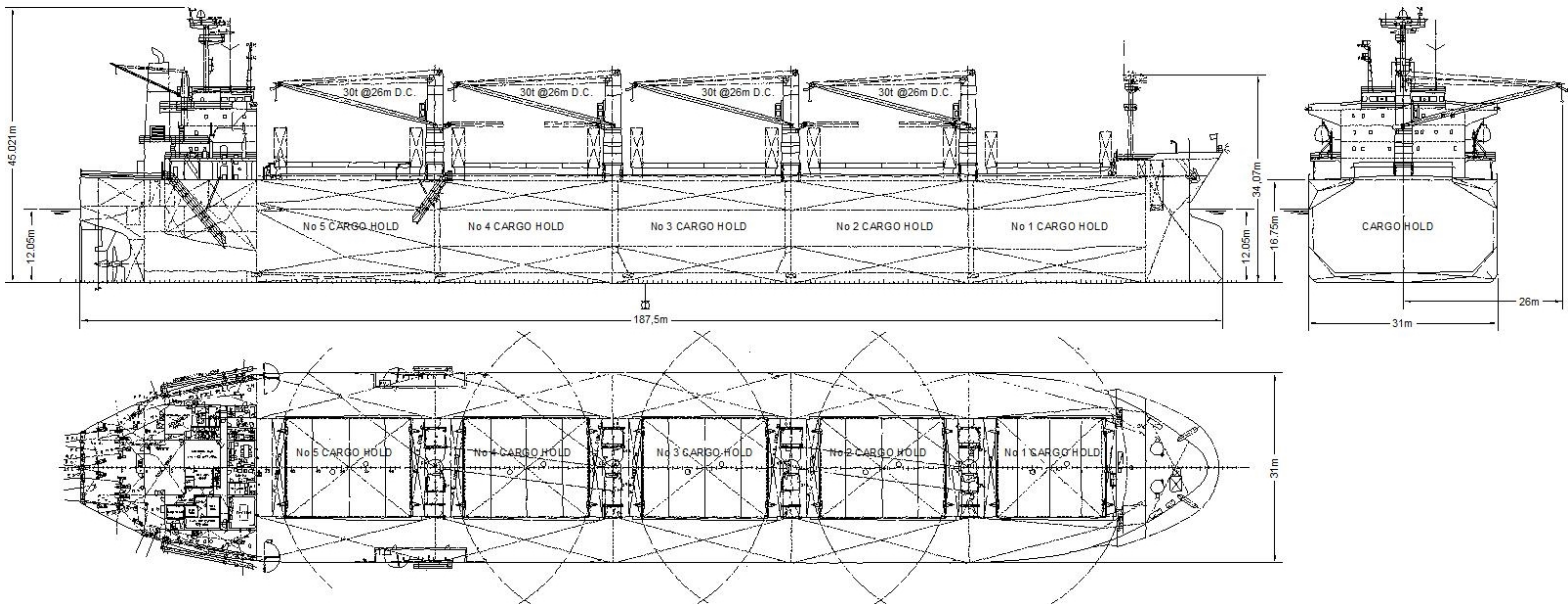




TECHNICAL SPECIFICATIONS

Vessel type	HandyMax
Deadweight (DWT)	49,502 tonnes
Built	2002
Classification	+ 100 A1
Length Overall	187.5 meters
Breadth Moulded	31 meters
Total Hold Capacity (including hatches)	56,738 cubic meters
Gross Tonnage (GT)	27,198 tonnes
Net Tonnage (NT)	16,160 tonnes

MV *Ferbec* is the only vessel of Canada Steamship Lines fleet that does not go on the Great Lakes. It was built in 2002 and has joined the fleet on Canada Steamship Line in for 2017 season. It does a lot of steel trades.



DRAFT AND DEADWEIGHT

MARK (IN FW)	DRAFT		DEADWEIGHT	
	Meters	Feet	Tonnes	LT
Summer	12.071	39' 7"	49,502	48,720.21
Winter	11.820	38' 9"	48,191	47,429.91

HOLD CAPACITIES

COMPARTEMENT	Cubic Meters	Cubic Feet
Hold # 1	9,997.80	353,069
Hold # 2	12,312.5	434,812
Hold # 3	11,427	403,541
Hold # 4	11,985	423,246
Hold # 5	11,015.5	388,991
Net Hold Capacity	56,737.80	2,003,660

PRINCIPAL DIMENSIONS

DESCRIPTION	Meters	Feet
Length Overall	187.5	615' 1"
Length B.P.	179	587' 3"
Breadth	31	101' 8"
Depth	16.77	55' 00"

TPC AND TPI (AT SEAWAY DRAFT)

TPC (t/cm)	51.2
TPI (t/in)	130.04

HATCH DIMENSIONS

LENGTH		WIDTH	
Meters	Feet	Meters	Feet
6	19' 8"	20.25	66' 5"