

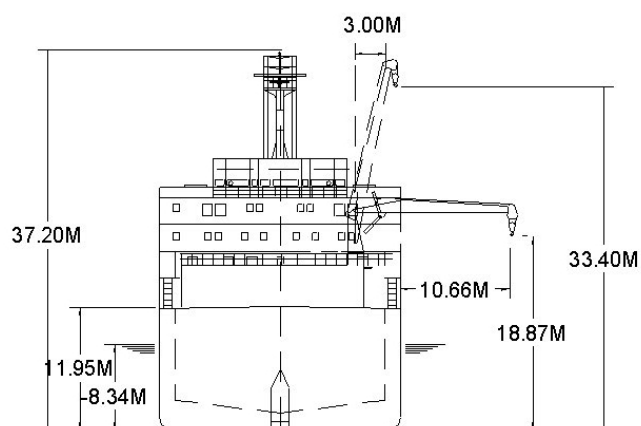
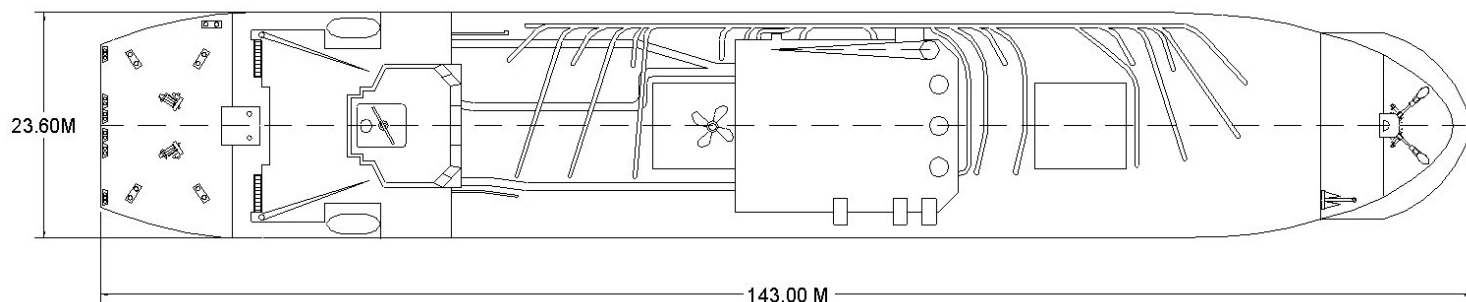


TECHNICAL SPECIFICATIONS

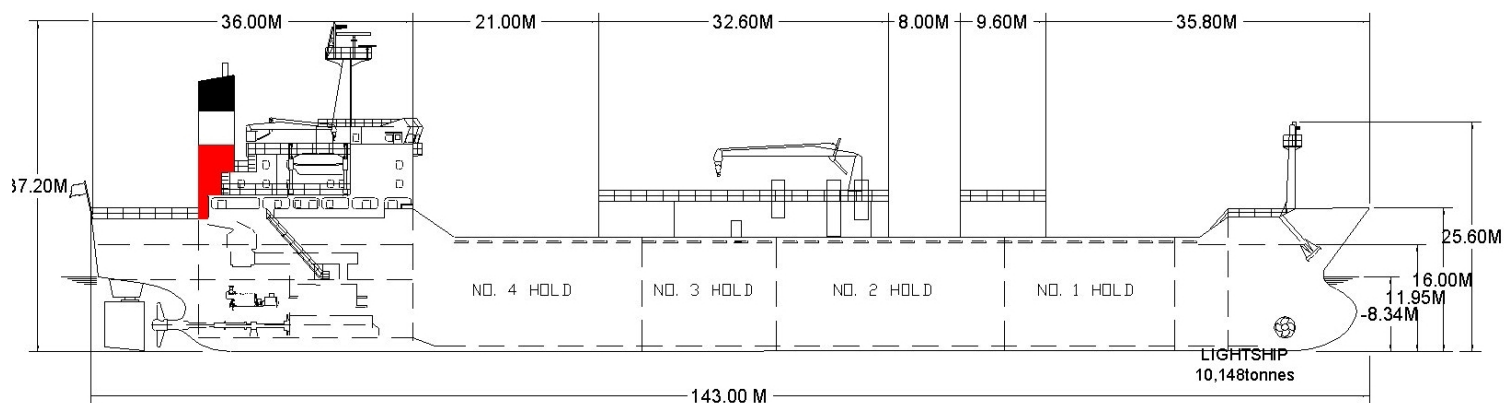
Goliath is a pneumatic cement carrier.

Built	1993
Classification	LLOYDS +100A1, +LMC, UMS, CCS, IWS, LNC (AA) strengthened
Length overall (m)	143.0
Breadth Moulded (m)	25.50
Depth Moulded (m)	11.94
Total Hold Capacity (m ³)	13,729
Deadweight (t)	15,599
Draft (m)	8.33
Gross Tonnage	11,754
Net Tonnage	3,526
Bow Thruster (kW)	1,200
Discharge Rate (max tph)	1,200

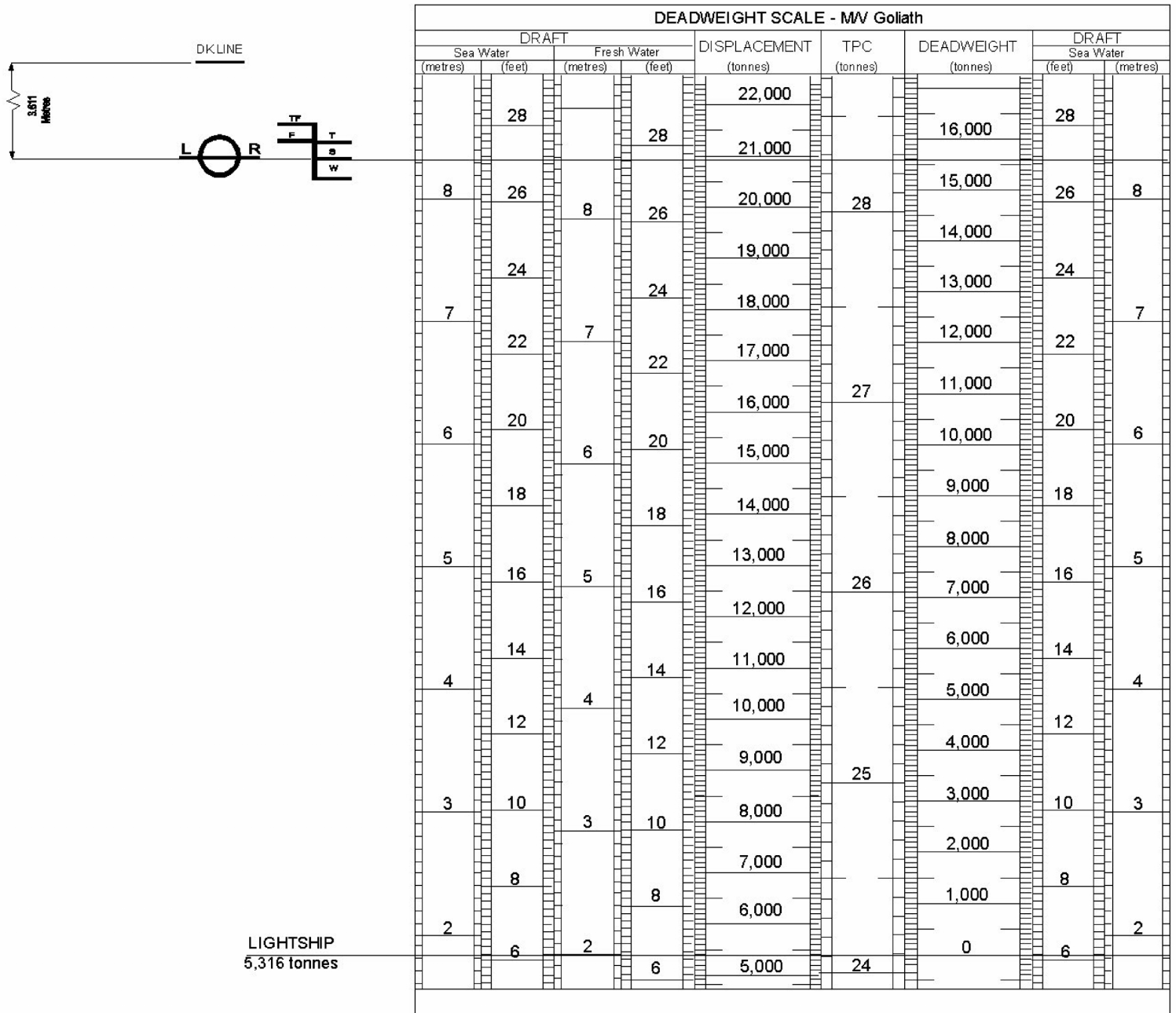
GOLIATH



ASSIGNED DRAFT			
Season	Draft (metre)	Displ. (tonnes)	DWT (tonnes)
TF	8.67	21,339	16,023
F	8.49	21,346	16,030
T	8.50	20,858	15,542
S	8.34	20,915	15,599
W	8.14	20,367	15,051



PNEUMATIC CEMENT VESSEL



HATCH AND HOLD SPECIFICATIONS

HOLD VOLUMES (CUBIC METRES)

HOLD NUMBER	1	2	3	4		TOTAL
Hold Volume	2,631	4,234	2,636	4,228		13,629

HOLD OPENINGS IN METRES

NUMBER OF OPENINGS	1	1	1	1		
Opening Length	1.60	1.60	1.60	1.60		
Opening Width	0.60	0.60	0.60	0.60		
Coaming Height Above Keel	12.00	12.00	12.00	12.00		

CARGO HANDLING EQUIPMENT

Self-enclosed Positive Feed Pneumatic System

4 Ibau Pneumatic Positive Feed Cement Pumps

8 Ibau Variable-aperture Flow Control Gates

8 Aervener VM Screw Compressors

8 Ibau Rotary Piston Blowers

Ibau Two-way Diverter Valves

Support machinery:

Main Cargo Crane for Hose Support

1 x Hagglands 10t SWL Cargo Crane with Max outreach 10.66 t,
at 18.9 m Above Keel

Cargo Crane to Assist Connection / Disconnection

1 x Hagglands 3t SWL Cargo Crane

Discharge Rate: 1,200 tph

CONSUMPTION (TONNES PER DAY)

	SPEED		MAIN ENGINE HFO		A/E
	Loaded	Ballast	Loaded	Ballast	HFO
Sea	12.8	13.0	25.0	24.0	2.6
Port/ Anchorage			N/A	N/A	2.6
Loading/ Discharge			N/A	N/A	14.5

All specifications given in good faith but without guarantee.