



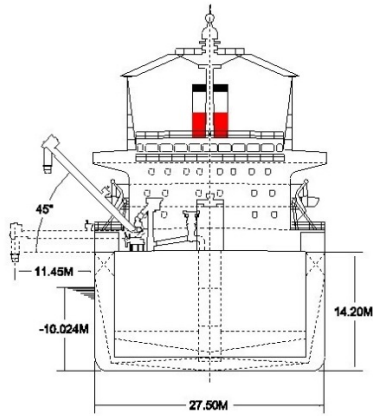
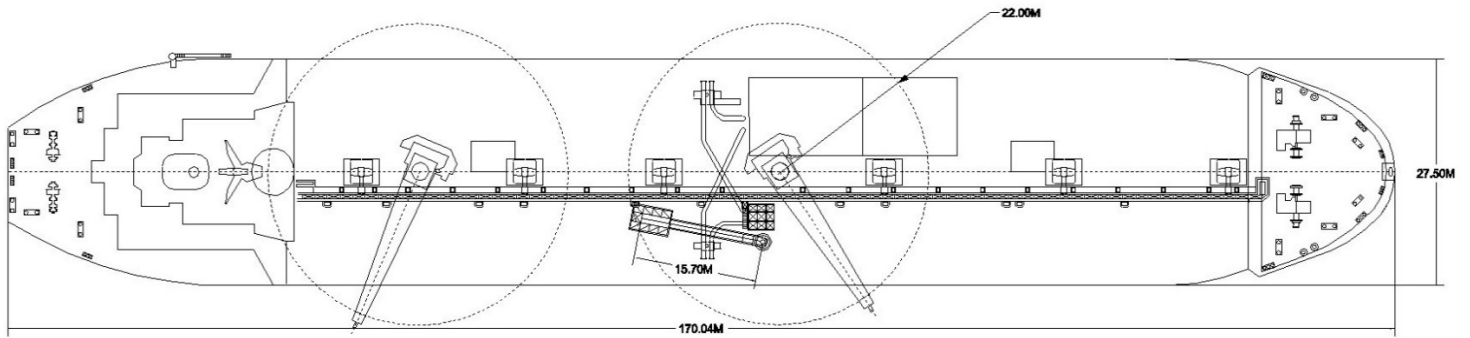
## TECHNICAL SPECIFICATIONS

Built	1984 (converted to a cement carrier in 1998)
Classification	Cement Carrier ERS, MLC-IC, ISPS-IC, SMC
Length Overall (m)	170.04
Breadth Moulded (m)	27.50
Depth Moulded (m)	14.20
Total Hold Capacity (m <sup>3</sup> )	25,957
Deadweight (t)	28,979
Draft (m)	10.02
Gross Tonnage	18,284
Net Tonnage	6,750
Thruster (kW)	1,200
Discharge Rate (max tph)	850 tph

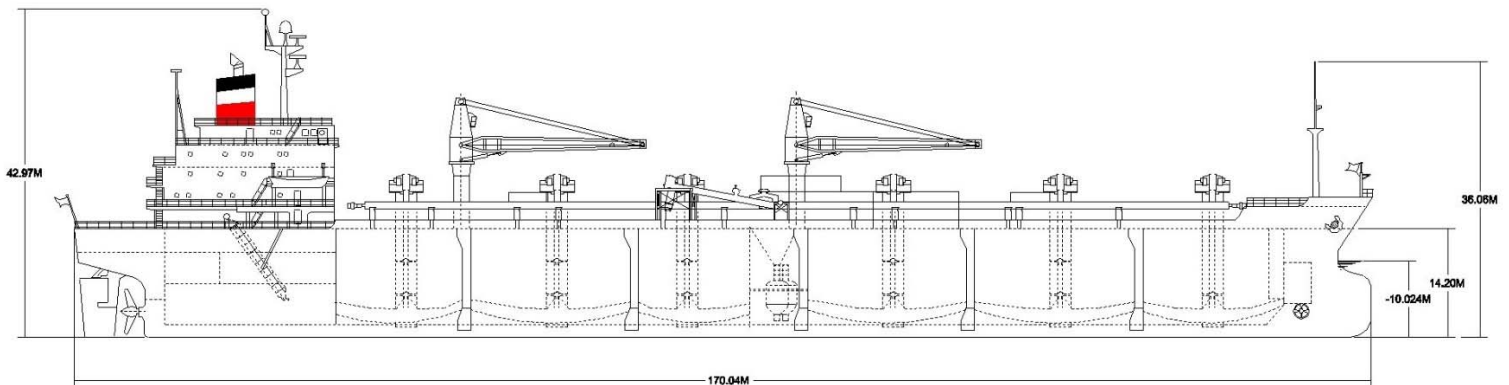
*Luga* is a cement carrier designed for pneumatic and mechanical loading and unloading.

The vessel carries cement and fly ash.

# LUGA

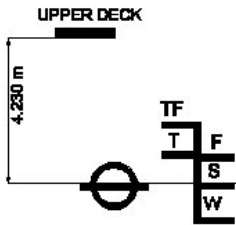


ASSIGNED DRAFT			
Season	Draft (metre)	Displ (tonnes)	DWT (tonnes)
TF	10.48	37,972	29,812
F	10.25	37,140	28,981
T	10.23	37,989	29,828
S	10.02	37,138	28,979
W	9.82	36,293	28,134



# CEMENT CARRIER

## DEADWEIGHT SCALE - MV LUGA



DRAFT		DISPLACEMENT		TPC (tonnes)	DEADWEIGHT (tonnes)	DRAFT	
Sea Water		Fresh Water				Sea Water	
(metres)	(feet)	(metres)	(feet)			(feet)	(metres)
10.5	36	11	38	41	30,000	36	10.5
10	34	10.5	34			34	10
9.5	32	10	32	35,000		32	9.5
9	30	9.5	30	40	25,000	30	9
8.5	28	9	28			28	8.5
8	26	8.5	26	30,000		26	8
7.5	24	8	24	39	20,000	24	7.5
7	22	7.5	22			22	7
6.5	20	7	20	25,000		20	6.5
6	18	6.5	18		15,000	18	6
5.5	16	6	16	20,000		16	5.5
5	14	5.5	14		10,000	14	5
4.5	12	5	12	15,000		12	4.5
4	10	4.5	10		5,000	10	4
3.5	8	4	8	37		8	3.5
3	6	3.5	6			6	3
2.5	4	3	4	10,000		4	2.5
	2	2.5	2	36	0	2	2
	0	0	0			0	0

Lightship 8,159 t

## HATCH AND HOLD SPECIFICATIONS

## HOLD VOLUMES (CUBIC METRES)

HOLD NUMBER	1	2	3	4	5	6	TOTAL
Total Volume (m <sup>3</sup> )	3,267	5,236	5,249	3,728	5,238	3,239	25,958
Weight (t) Max	3,824	6,157	6,173	4,383	6,160	3,809	

## CARGO HANDLING EQUIPMENT

Loading Mechanical: Midship.  
Secondary Loading Point: #2 Hold

Pneumatic Loading Point  
Loading is Only on Starboard Midship Through 2 pcs 14' Diameter Pipes into Cargo Holds #3 and #5

Unloading Mechanical: Through Unloading Boom

Pneumatic Unloading  
Through 2 Lines Port and Starboard.  
Horizontal distance 300 m  
Vertical Max Rate: 50 m  
Number of 90 degrees Bends: 5 pcs  
Discharge Pipe O.D. 18"

Screw Compressors; Aezener, 4 Units 142 CBM / Min x 4

Aeration Blowers: 100 CBM / Min x 2

Reversible Horizontal Screw Conveyor  
Forward: 1000 tph, Length 39 m  
Aft: 1000 tph, Length 34 m

Vertical Screw Conveyors  
Max 675 tph  
Height 17.7 m

Dust Collectors  
Number of Units: 2  
Capacity: 9,600 CBM of Air x 2

Cranes: 2 x 25t SWL for Hose Handling Forward and Aft

## CONSUMPTION (TONNES PER DAY)

	SPEED		MAIN ENGINE HFO		A/E
	Loaded	Ballast	Loaded	Ballast	HFO
Sea	13.0	13.0	19.0	17.8	1.3
Port/ Anchorage			N/A	N/A	1.6
Loading/ Discharge			N/A	N/A	7.7/9.0

All specifications given in good faith but without guarantee.