

## TECHNICAL SPECIFICATIONS

Built	2006
Classification	Lloyds Register 100 A1 Pontoon
Length overall (m)	96.00
Breadth Moulded (m)	27.60
Depth Moulded (m)	6.00
Total Hold Capacity (m3)	57,208.40
Deadweight (t)	4,766
Draft (m)	3.20
Gross Tonnage	5,349
Net Tonnage	1,604
Bow Thruster (kW)	Not Fitted
Length of Boom	39.00
Discharge Rate (max tph)	5,000

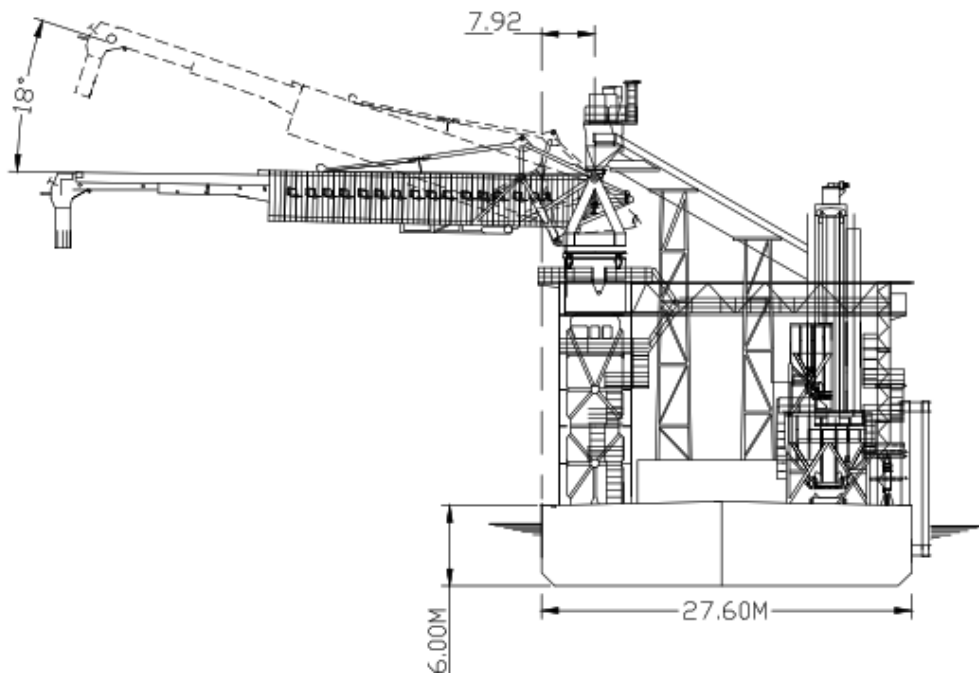
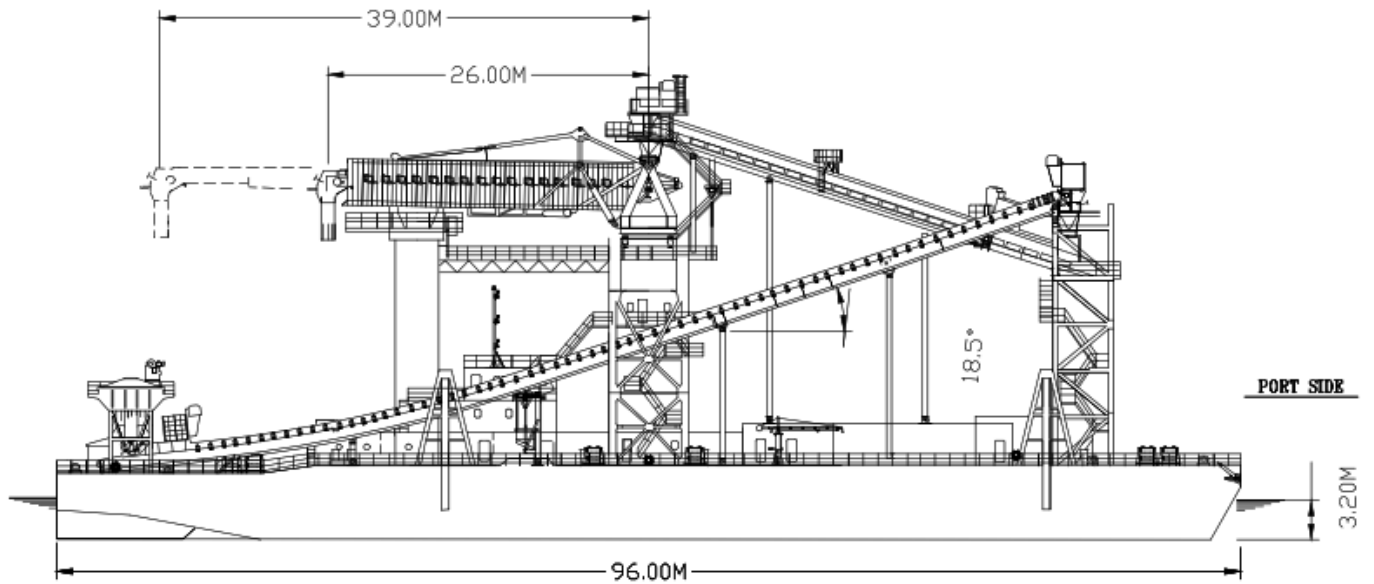
*Spencer Gulf* is a floating offshore transfer barge (FOTB) designed for transshipping iron ore into vessels up to cape size.

The FOTB receives cargo from two self-unloading transshipment barges: *Middleback* and *Barngarla*.

*Spencer Gulf* is fitted with a receiving hopper, incline conveyors and a telescopic ship loader.

# SPENCER GULF

# TRANSHIPPER



All specifications given in good faith but without guarantee.