



TECHNICAL SPECIFICATION

Built	2012
Classification	DNV +1A General Dry Cargo Ship, BIS, E0, Ice(1C), TMON(oil lubricated)
Length overall (m)	149.96
Breadth moulded (m)	23.60
Depth moulded (m)	12.50
Total Hold Capacity (m ³)	22,192.4
Deadweight (t)	18,499
Draft (summer) (m)	9.161
Gross Tonnage	TBC
Net Tonnage	TBC
Holds Hatches	5
Length of Boom (m)	45 Total 42.34 From Port Side
Discharge Rate (max tph)	1,500

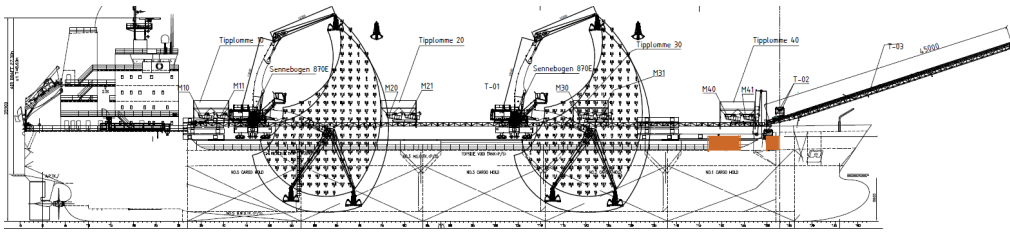
CSL Flexvik's self-unloader concept is designed to handle rock of all gradings, from sand to armour rock.

Equipped with two electric excavators (Sennebogen 870), the vessel can self-load and self-discharge.

The deck hoppers and discharge boom provide for a single point discharge, which means that the ship can discharge to shore via the boom to a stockpile or hopper/trucks ashore, or tranship material from ship to ship, for example to feed a rock installation vessel.

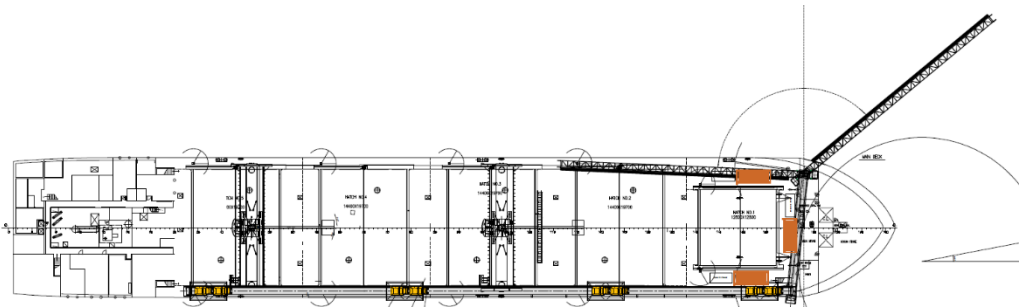
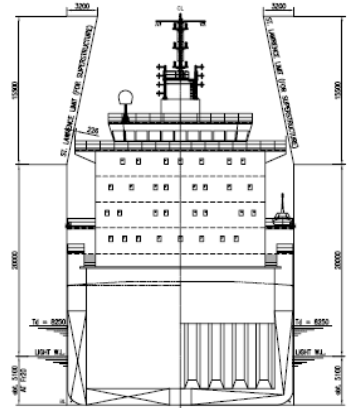
The excavators can also discharge directly and can handle armour rock up to 1-3 tonnes.

CSL



**FLEXVIK
UNLOADER**

SELF-



DRAFT AND DEADWEIGHT

Season	Draft (metres)	Displ. (tonnes)	DWT (tonnes)
Summer	9.161	25,589.90	18,351.20

HATCH DIMENSIONS (METRES)

HOLD CAPACITIES (CUBIC METRES)

COMPARTMENT Capacity (RHO = 1,000kg/m ³)	Cubic, VNET m ³
Hold # 1	3,445.90
Hold # 2	4,744.90
Hold # 3	4,744.90
Hold # 4	4,793.10
Hold # 5	4,463.40
Net Hold Capacity	22,192.40

	Length	Width	Height
Hatch # 1	12.80	12.80	14.45
PRINCIPAL DIMENSIONS			
Hatch # 3 DESCRIPTION	14.40	19.70 Metres	14.45
Length Overall		149.96	
Hatch # 5 Length B.P.	14.40	19.70 140.80	14.45
Breadth		23.60	
Depth		12.50	

All specifications given in good faith but without guarantee.