

# ALGOMA CELEBRATION



## TECHNICAL SPECIFICATIONS

Built	2025
Classification	American Bureau of Shipping
Length Overall	229.00 metres
Length B.P. (Lpp)	225.30 metres
Breadth Moulded	32.26 metres
Depth Moulded	20.15 metres
Total Hold Capacity (including hatches)	73,485 cubic metres
Deadweight	79,610 tonnes
Draft - Summer	14.418 metres
Gross Tonnage	44,640 tonnes
Net Tonnage	20,190 tonnes
Bow Thruster	1,500 kW
Length of Boom	80.00 metres
Discharge Rate (maximum)	5,000 tonnes/hour or 4,000 m <sup>3</sup> /hour, whichever is first reached

*Algoma Celebration* is a self-unloading bulk carrier with seven cargo holds, strengthened for heavy cargoes, loaded through seven hatches.

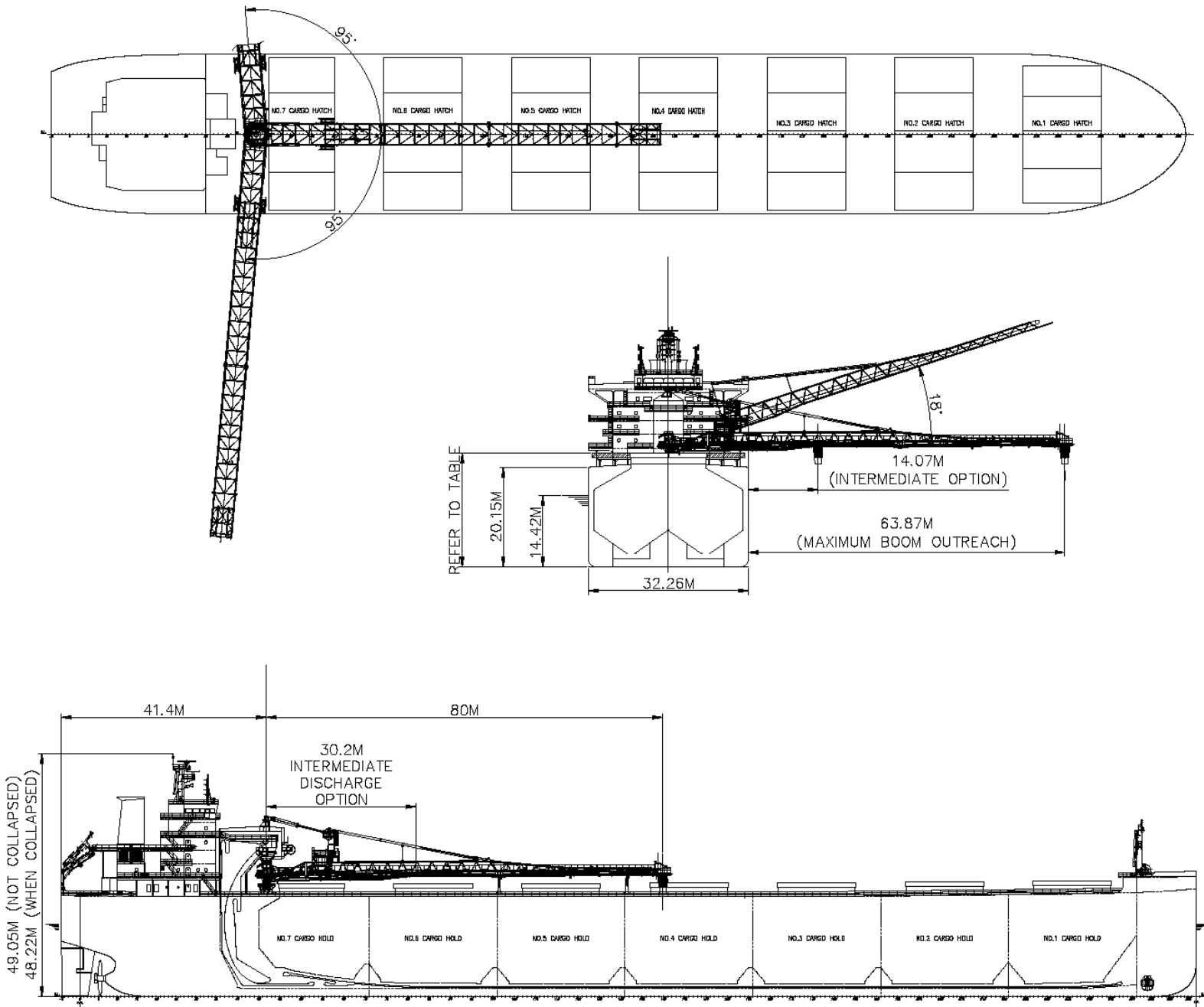
The discharge is gravity fed through the gate system via two longitudinal conveyor belts feeding to a central C-loop that lifts the cargo onto the boom conveyor and ashore.

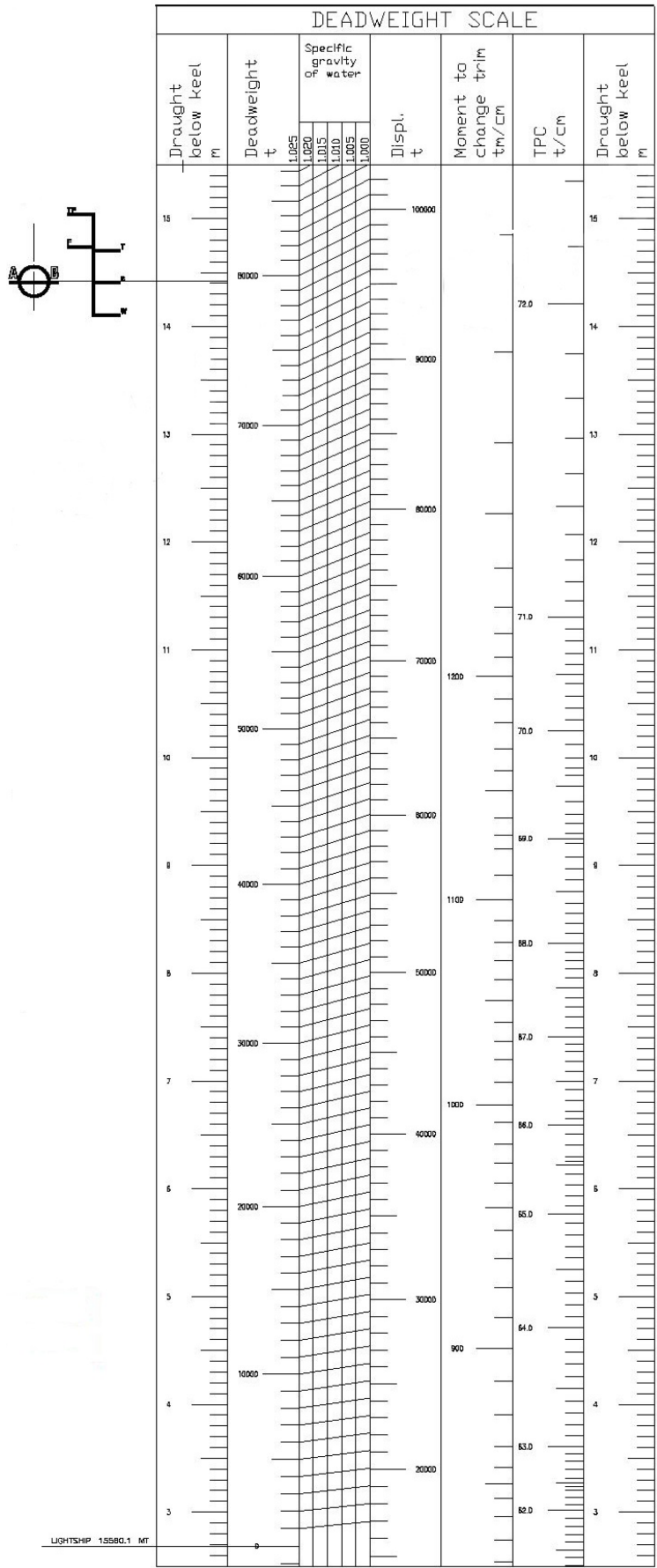
Discharge rate is variable to the maximum of 5,000 metric tonnes per hour and 4,000 cubic metres per hour for volumetric cargoes.

Using the flexible boom and precise control of the discharge rate makes the vessel suitable for discharge to almost any receiving facility including enclosed hoppers, barges, and trucks.

The vessel is double hulled, including bunker tanks, and utilizes a bow thruster and rudder to give excellent handling characteristics.

MV *Algoma Celebration* is wholly owned by Algoma Central Corporation and commercially managed by CSL as part of the CSL International Pool.





## HATCH AND HOLD SPECIFICATIONS

### HOLD VOLUMES (CUBIC METRES)

HOLD NUMBER	1	2	3	4	5	6	7	TOTAL
Cubic Volume (Maximum)	9,815	11,250	11,187	11,142	11,137	11,059	7,895	73,485

### HOLD OPENINGS (METRES)

NUMBER OF OPENINGS	1	1	1	1	1	1	1
Opening Length	15.48	15.48	15.48	15.48	15.48	15.48	12.90
Opening Width	13.50	15.00	15.00	15.00	15.00	15.00	15.00
Coaming Height Above Keel	22.53	22.25	22.08	22.08	21.88	21.88	21.88

### HATCH INFORMATION (METRES)

DESCRIPTION	Side-Rolling Panels						
Operation	Hydraulic						
Hatch Length	15.84	15.84	15.84	15.84	15.84	15.84	13.26
Hatch Width	13.91	15.41	15.41	15.41	15.41	15.41	15.41
Hatch Top Height Above Keel (When Hatch Cover Open)	23.65	23.36	23.19	23.19	22.99	22.99	22.79

## CARGO HANDLING EQUIPMENT

Two Hold Conveyors

Two Transfer Conveyors

One Boom Conveyor

One "C" Loop Conveyor

All conveyors are driven by variable speed motors, gears and couplings.

Discharging is done through hydraulically operated gates fitted to outlet hoppers in the bottom of cargo holds.

Boom Belt: 1,981 mm wide

Tunnel Belts: 2,134 mm wide

Transfer Belts: 2,134 mm wide

"C" Loop Belt: 2,286/2,438 mm wide

Dust Suppression: Dust collectors as well as water sprayers on the boom, and foam sprayers in the transfers.

Discharge Rate: 5,000 mt/hr or 4,000 m<sup>3</sup>/hr, whichever is first reached

Maximum Boom Outreach: 80 metres (from center of pivot to center of boom discharge chute)

## SPEED | CONSUMPTION

	SPEED (Knots)		CONSUMPTION (Metric Tonnes/Day)		
	Loaded	Ballast	Loaded	Ballast	Port
At Sea	12.50	13.00	20.50	20.50	N/A
Loading					3.00
Discharge					7.50

## ASSIGNED DRAFT

Season	Draft (Metres)	Displacement (Tonnes)	DWT (Tonnes)
TF	15.048	97,300	81,719
F	14.748	95,189	79,608
T	14.718	97,352	81,772
S	14.418	95,190	79,610
W	14.118	93,029	77,449

All specifications are given in good faith but without guarantee.